


APP CRS <b>071°</b>	Rwy Idg <b>8566</b>
	TDZE <b>119</b>
	Apt Elev <b>128</b>

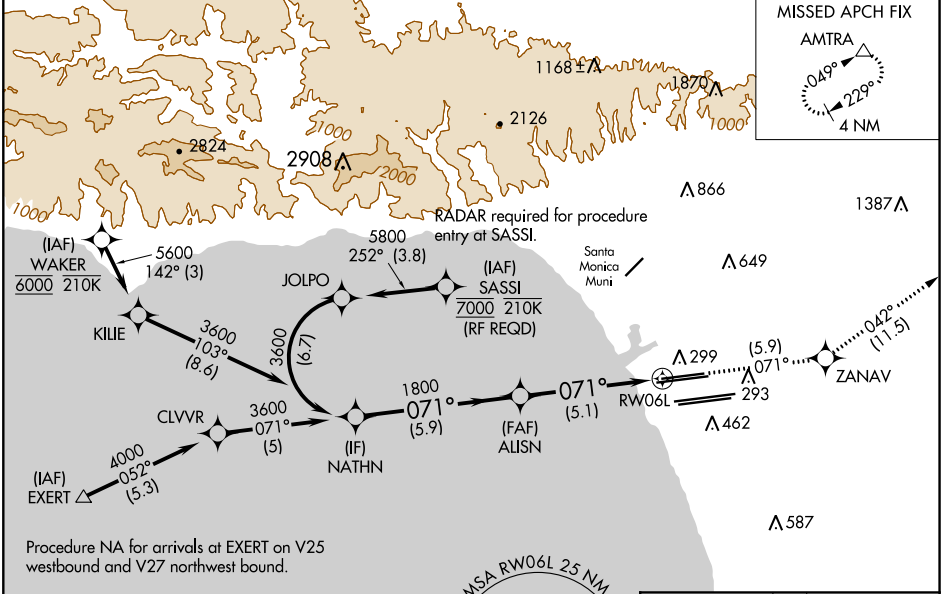
# RNAV (RNP) Z RWY 6L

LOS ANGELES INTL (LAX)

**▽** For uncompensated Baro-VNAV systems, procedure NA below 5°C (41°F) or above 54°C (130°F). Simultaneous approach authorized. GPS required. For inop MALSR, increase RNP 0.30 all Cats visibility to RVR 6000.

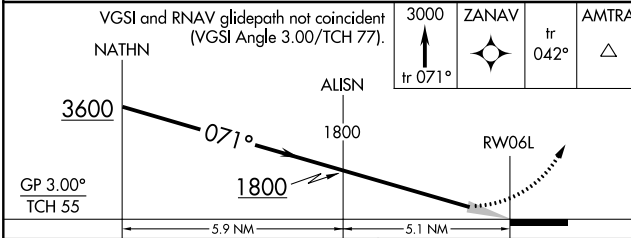
**MALSR**  
  
**MISSED APPROACH:** Climb to 3000 on track 071° to ZANAV and on track 042° to AMTRA and hold.

D-ATIS ARR <b>133.8</b> DEP <b>135.65</b>	SOCAL APP CON <b>124.3 363.2</b> (APCH FM WEST) <b>124.5 235.975</b> (225°-044°)	<b>124.9 269.0</b> (090°-224°)	LOS ANGELES TOWER <b>N 133.9 239.3</b> <b>S 120.95 379.1</b>	GND CON <b>N 121.65 327.0</b> <b>S 121.75 327.0</b> <b>W 121.4 327.0</b>	CLNC DEL <b>120.35</b> <b>327.0</b>	CPDLC
---	--	-----------------------------------	--	---	---	-------



Procedure NA for arrivals at EXERT on V25 westbound and V27 northwest bound.

ELEV 128	<b>D</b> TDZE 119
----------	-------------------



CATEGORY	A	B	C	D
RNP 0.30 DA		484/40	365 (400-¾)	

**AUTHORIZATION REQUIRED**

071° to RW06L

TDZ/CL Rwy's 6R, 7L, 24R, and 25L  
HIRL all Rwy's

SW-3, 28 FEB 2019 to 28 MAR 2019

SW-3, 28 FEB 2019 to 28 MAR 2019