


APP CRS	Rwy Idg	<b>11134</b>
<b>251°</b>	TDZE	<b>104</b>
	Apt Elev	<b>128</b>

# RNAV (RNP) Z RWY 25R

LOS ANGELES INTL (LAX)

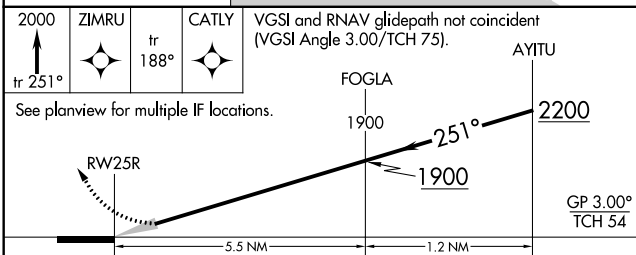
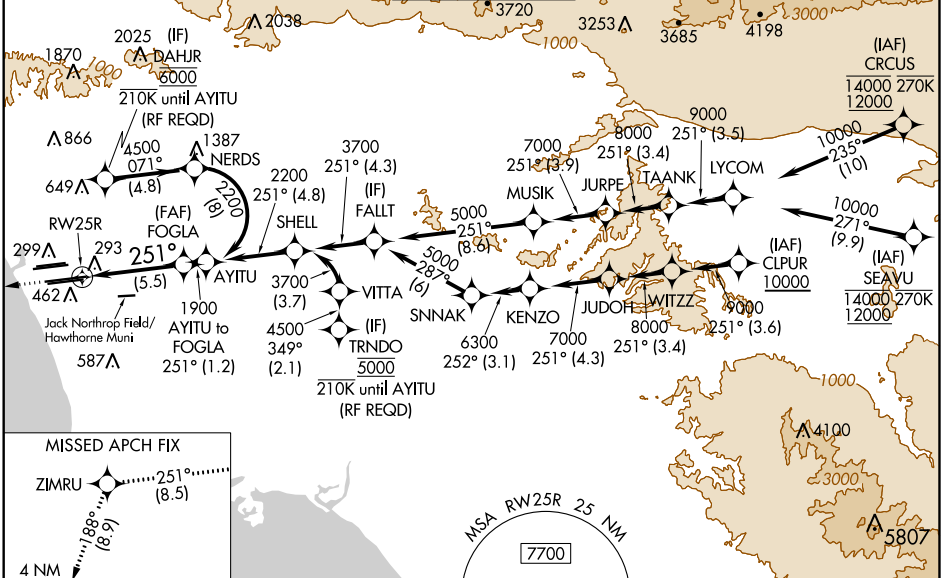
For uncompensated Baro-VNAV systems, procedure NA below 5°C (41°F) or above 54°C (130°F). Simultaneous approach authorized. Simultaneous approach authorized with HHR. GPS required. For inop ALS, increase RNP 0.11 all Cats visibility to RVR 6000.

MALSR



MISSED APPROACH: Climb to 2000 on track 251° to ZIMRU and track 188° to CATLY and hold.

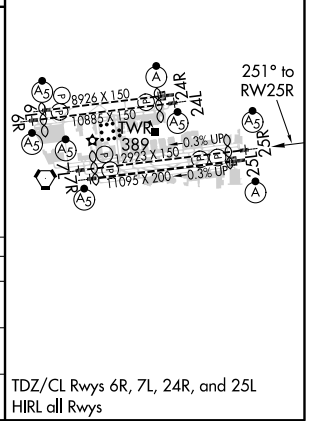
D-ATIS	SOCAL APP CON		LOS ANGELES TOWER		GND CON		CLNC DEL	CPDLC
ARR <b>133.8</b>	<b>124.3</b>	<b>363.2</b>	<b>124.9</b>	<b>269.0</b>	<b>N 133.9</b>	<b>239.3</b>	<b>N 121.65</b>	<b>327.0</b>
DEP <b>135.65</b>	<b>124.5</b>	<b>235.975</b>	<b>128.5</b>	<b>360.7</b>	<b>S 120.95</b>	<b>379.1</b>	<b>S 121.75</b>	<b>327.0</b>
	(225°-044°)		(090°-224°)	(045°-089°)			<b>W 121.4</b>	<b>327.0</b>



CATEGORY	A	B	C	D
RNP 0.11 DA		453/40	349 (400-¾)	
RNP 0.30 DA		544/50	440 (500-1)	

**AUTHORIZATION REQUIRED**

ELEV 128	TDZE 104
----------	----------



SW-3, 28 FEB 2019 to 28 MAR 2019

SW-3, 28 FEB 2019 to 28 MAR 2019