

APP CRS	Rwy Idg	<b>11095</b>
<b>251°</b>	TDZE	<b>104</b>
	Apt Elev	<b>128</b>

# RNAV (RNP) Z RWY 25L

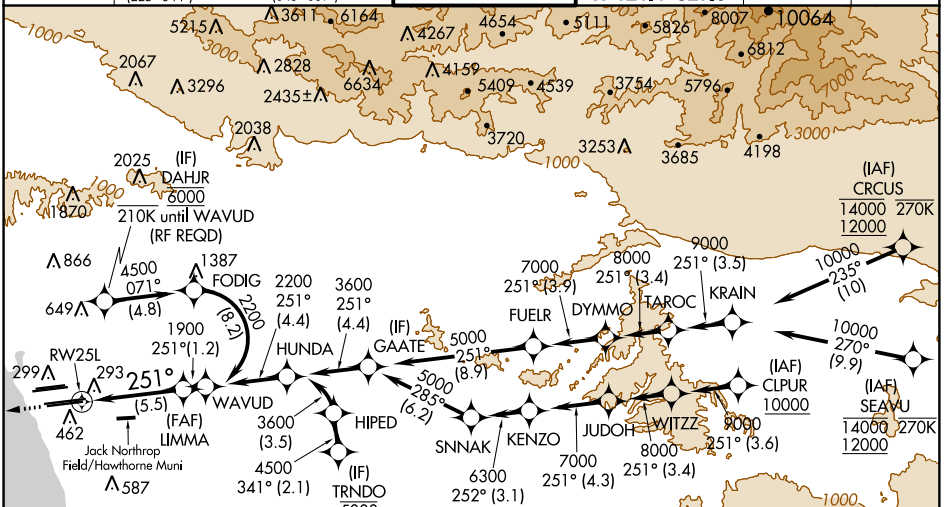
LOS ANGELES INTL (LAX)

**▼** For uncompensated Baro-VNAV systems, procedure NA below 5°C (41°F) or above 54°C (130°F). GPS required. Simultaneous approach authorized. Simultaneous approach authorized with HHR.

ALSF-2

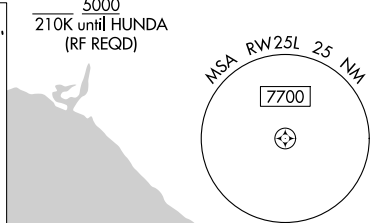
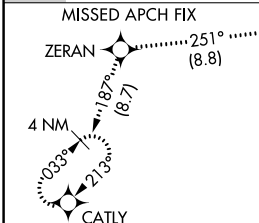
MISSED APPROACH: Climb to 2000 on track 251° to ZERAN and on track 187° to CATLY and hold.

D-ATIS	SOCAL APP CON		LOS ANGELES TOWER	GND CON		CLNC DEL	CPDLC
ARR <b>133.8</b>	<b>124.3</b>	<b>363.2</b>	<b>N 133.9</b>	<b>239.3</b>	<b>N 121.65</b>	<b>327.0</b>	
DEP <b>135.65</b>	<b>124.5 235.975</b>		<b>S 120.95</b>	<b>379.1</b>	<b>S 121.75</b>	<b>327.0</b>	
	<small>(225°-044°)</small>			<small>(045°-089°)</small>	<b>W 121.4</b>	<b>327.0</b>	



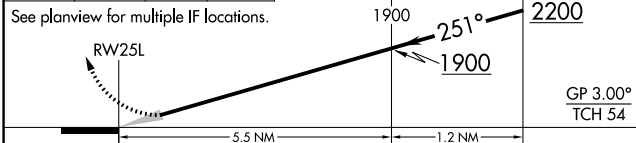
SW-3, 28 FEB 2019 to 28 MAR 2019

SW-3, 28 FEB 2019 to 28 MAR 2019



2000	ZERAN	tr 187°	CATLY
tr 251°			

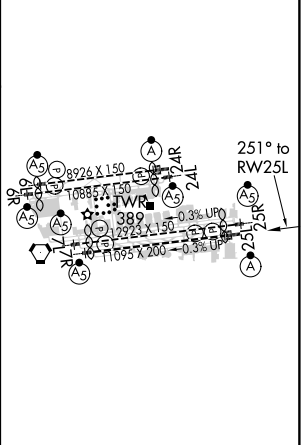
VGSI and RNAV glidepath not coincident. (VGSI Angle 3.00/TCH 70). WAVUD



CATEGORY	A	B	C	D
RNP 0.15 DA		445/30	341 (400- <sup>3</sup> / <sub>8</sub> )	
RNP 0.30 DA		543/50	439 (500-1)	

AUTHORIZATION REQUIRED

ELEV 128	<b>D</b>	TDZE 104
----------	----------	----------



TDZ/CL Rwws 6R, 7L, 24R, and 25L  
HIRL all Rwws