

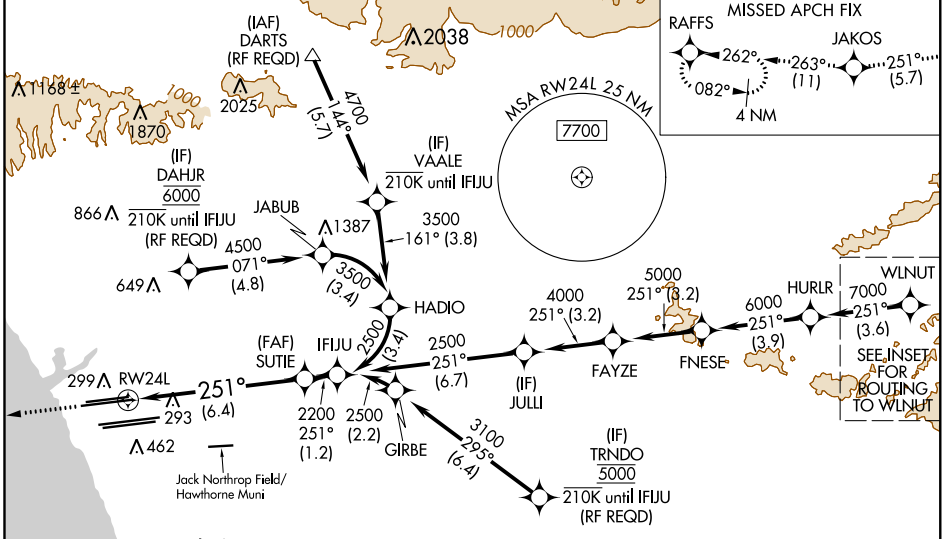
# RNAV (RNP) Z RWY 24L LOS ANGELES INTL (LAX)

APP CRS <b>251°</b>	Rwy Idg <b>9483</b>
	TDZE <b>123</b>
	Apt Elev <b>128</b>

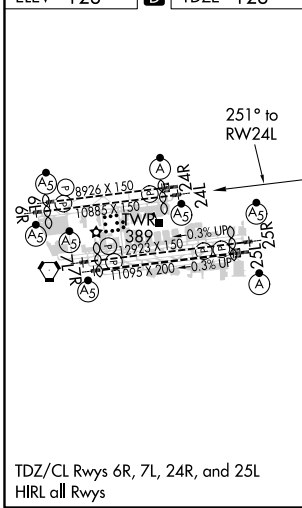
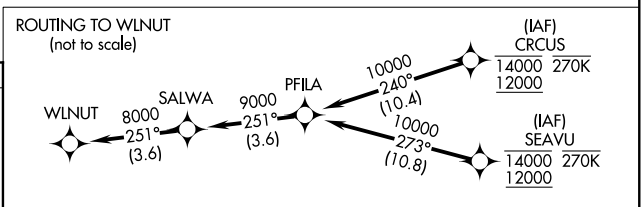
**▼** For uncompensated Baro-VNAV systems, procedure NA below 5°C (41°F) or above 54°C (130°F). Simultaneous approach authorized. Simultaneous approach authorized with KHHR. GPS required. For inop ALS, increase RNP 0.15 all Cats visibility to 1½ SM.

**MALSR**  
 MISSED APPROACH: Climb to 2000 on track 251° to JAKOS and track 263° to RAFFS and hold.

D-ATIS ARR <b>133.8</b> DEP <b>135.65</b>	SOCAL APP CON <b>124.3 363.2</b> (APCH FM WEST) <b>124.5 235.975</b> (225°-044°)	<b>124.9 269.0</b> (090°-224°) <b>128.5 360.7</b> (045°-089°)	LOS ANGELES TOWER <b>N 133.9 239.3</b> <b>S 120.95 379.1</b>	GND CON <b>N 121.65 327.0</b> <b>S 121.75 327.0</b> <b>W 121.4 327.0</b>	CLNC DEL <b>120.35</b> <b>327.0</b>	CPDLC
---	--	--	--	---	---	-------



ELEV <b>128</b>	<b>D</b>	TDZE <b>123</b>
-----------------	----------	-----------------



2000	JAKOS	tr 263°	RAFFS	See planview for multiple IF locations.	SUTIE	IFJU
tr 251°					2200	2500
VGSi and RNAV glidepath not coincident (VGSi Angle 3.00/TCH 59).						
RWY 24L					GP 3.00° TCH 59	
		6.4 NM		1.2 NM		

CATEGORY	A	B	C	D
RNP 0.15 DA		545/50	422 (500-1)	
RNP 0.30 DA		592/60	469 (500-1½)	

SW-3, 28 FEB 2019 to 28 MAR 2019

SW-3, 28 FEB 2019 to 28 MAR 2019