

OCEAN THREE ARRIVAL

AL-237 (FAA)

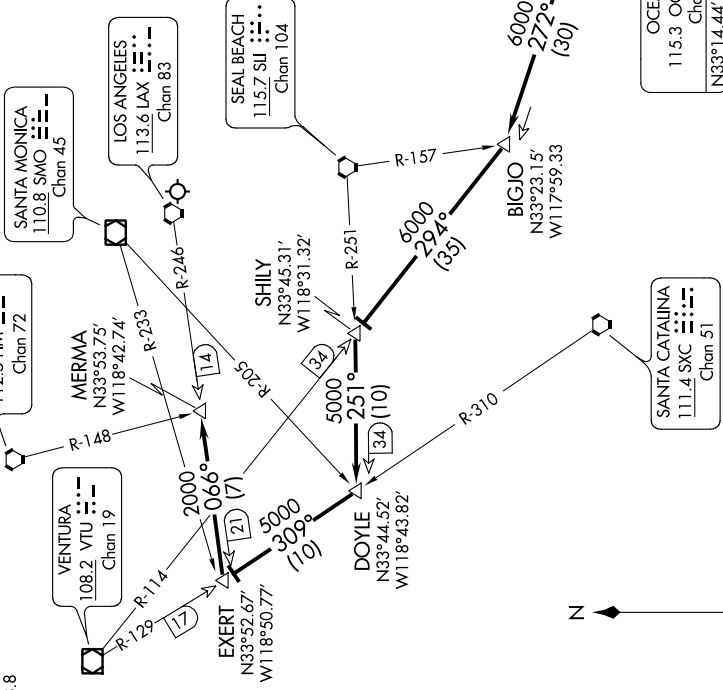
LOS ANGELES INTL (LAX)
LOS ANGELES, CALIFORNIA

SW-3, 28 FEB 2019 to 28 MAR 2019

ARRIVAL ROUTE DESCRIPTION

From over JLI VORTAC on JLI R-263 and OCN R-083 to VISTA, then on OCN R-083 to CYNDE DME, then on OCN R-083 to OCN VORTAC, then on OCN R-272 and VTU R-114 to SHILY INT, then on SLI R-251 to DOYLE INT, then on VTU R-129 to EXERT INT, then on LAX R-246 to MERMA INT. Expect RADAR vectors to final approach course for Runways 6 or 7.

SOCAL APP CON
128.1 281.4
D-ATIS ARR
133.8



OCEAN THREE ARRIVAL

LOS ANGELES, CALIFORNIA
LOS ANGELES INTL (LAX)

SW-3, 28 FEB 2019 to 28 MAR 2019

NOTE: Chart not to scale.

TURBOJET VERTICAL NAVIGATION
PLANNING INFORMATION
Expect FL240

MISSION BAY
117.8 MZB
Chan 125

JULIAN
114.0 JLI
Chan 87
N33°08.43'-W116°35.16'
L-4, H-4

CYNDE
N33°13.75'-W117°19.16'
TURBOJET VERTICAL NAVIGATION
PLANNING INFORMATION
Expect 14000

OCEANSIDE
115.3 OCN
Chan 100
N33°14.44'-W117°25.06'

BIGJO
N33°23.15'
W117°59.33

SANTA CATALINA
111.4 SXC
Chan 51

