

LAXX ONE DEPARTURE

AL-237 (FAA)

LOS ANGELES INTL (LAX)
LOS ANGELES, CALIFORNIA

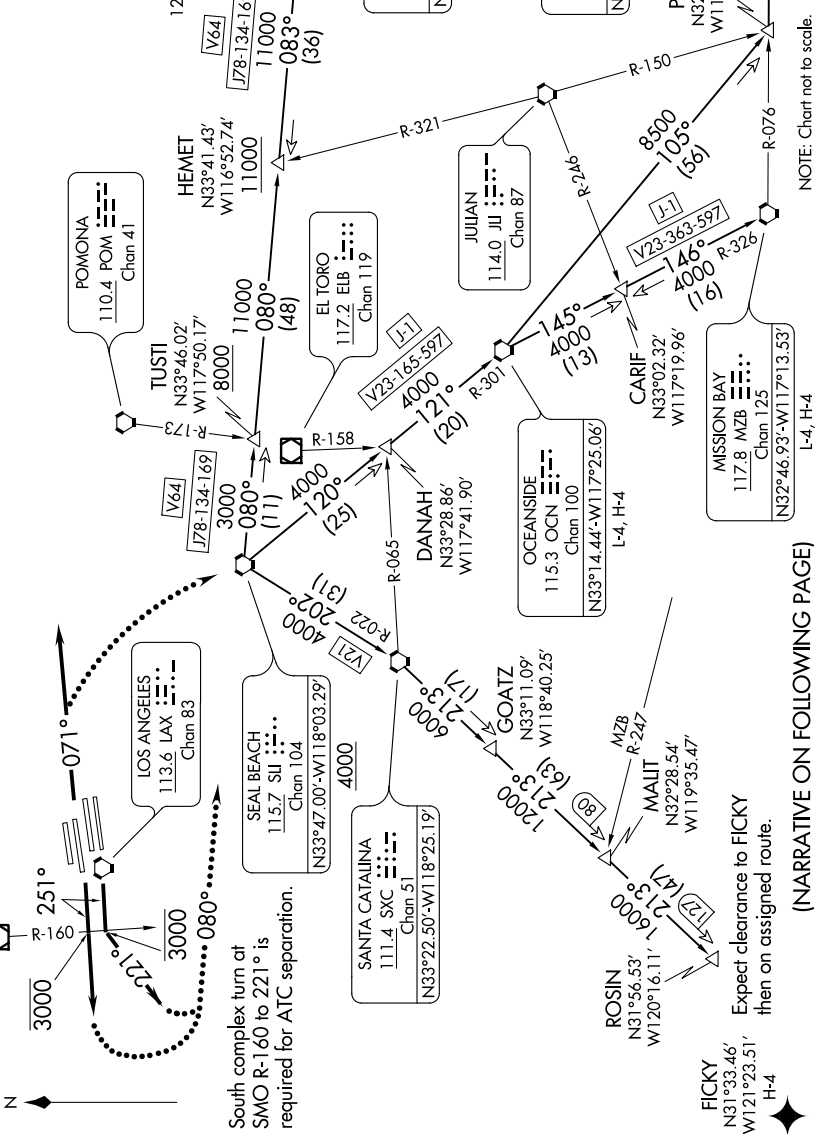
SW-3, 28 FEB 2019 to 28 MAR 2019

**TOP ALTITUDE:
ASSIGNED BY ATC**

TAKEOFF MINIMUMS
Rwy 6L/R, 7L/R, 24L/R, 25L/R: Standard.

NOTE: This departure is for turbojet aircraft only.
NOTE: RADAR and DME required.

D-ATIS DEP 135.65
CLNC DEL 120.35 327.0
CPDLC
GND CON
(N) 121.65 327.0
(S) 121.75 327.0
(W) 121.4 327.0
LOS ANGELES TOWER
(N) 133.9 239.3
(S) 120.95 379.1
SOCAL DEP CON
124.3 363.2 (045°-224°)
125.2 263.025 (225°-044°)



South complex turn at SMO R-160 to 221° is required for ATC separation.

FICKY
N31°33.46'
W121°23.51'
H-4
Expect clearance to FICKY then on assigned route.

(NARRATIVE ON FOLLOWING PAGE)

NOTE: Chart not to scale.

SW-3, 28 FEB 2019 to 28 MAR 2019