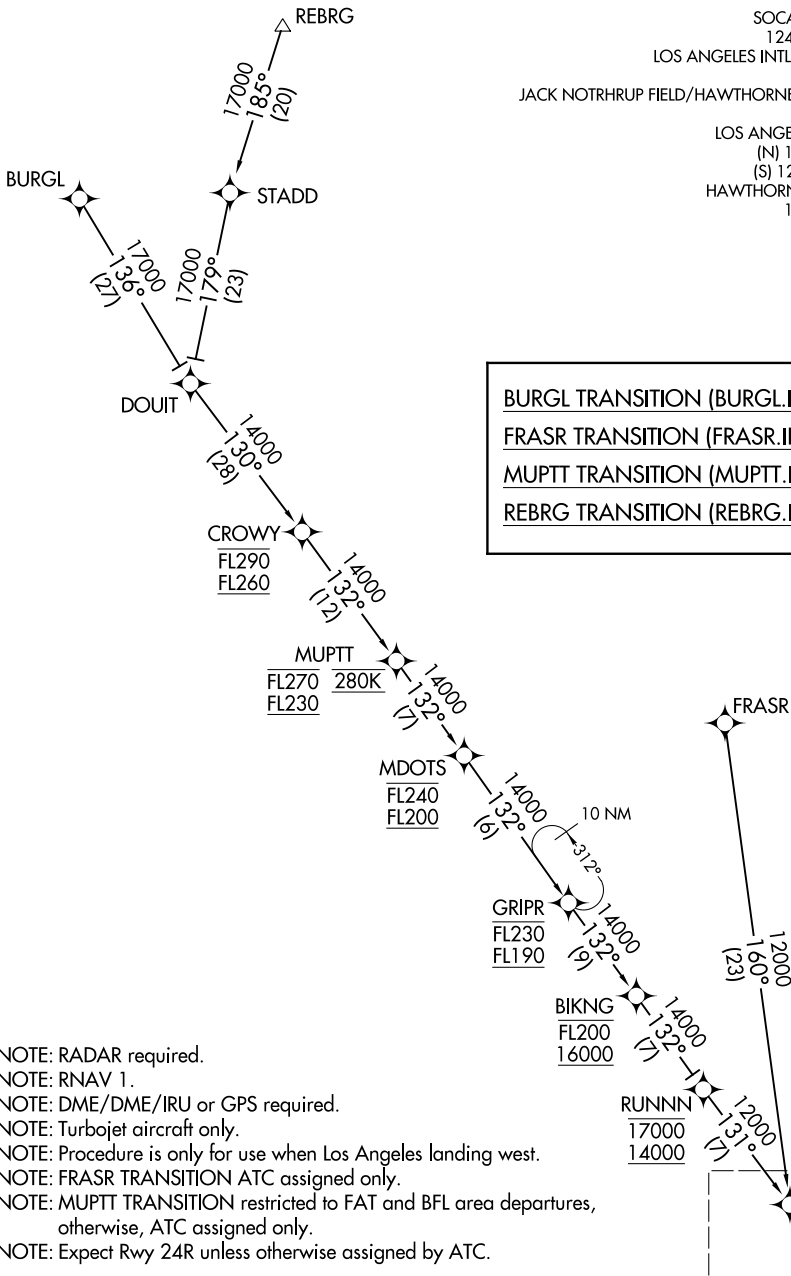


IRNMN TWO ARRIVAL (RNAV) Transition Routes

LOS ANGELES, CALIFORNIA

SOCAL APP CON
 124.5 235.975
 LOS ANGELES INTL D-ATIS ARR
 133.8
 JACK NOTHRUP FIELD/HAWTHORNE MUNI ATIS
 118.4
 LOS ANGELES TOWER
 (N) 133.9 239.3
 (S) 120.95 379.1
 HAWTHORNE TOWER ★
 121.1 257.8



- NOTE: RADAR required.
- NOTE: RNAV 1.
- NOTE: DME/DME/IRU or GPS required.
- NOTE: Turbojet aircraft only.
- NOTE: Procedure is only for use when Los Angeles landing west.
- NOTE: FRASR TRANSITION ATC assigned only.
- NOTE: MUPTT TRANSITION restricted to FAT and BFL area departures, otherwise, ATC assigned only.
- NOTE: Expect Rwy 24R unless otherwise assigned by ATC.

NOTE: Chart not to scale.

(CONTINUED ON FOLLOWING PAGE)

See following page for arrival route.

SW-3, 28 FEB 2019 to 28 MAR 2019

SW-3, 28 FEB 2019 to 28 MAR 2019