

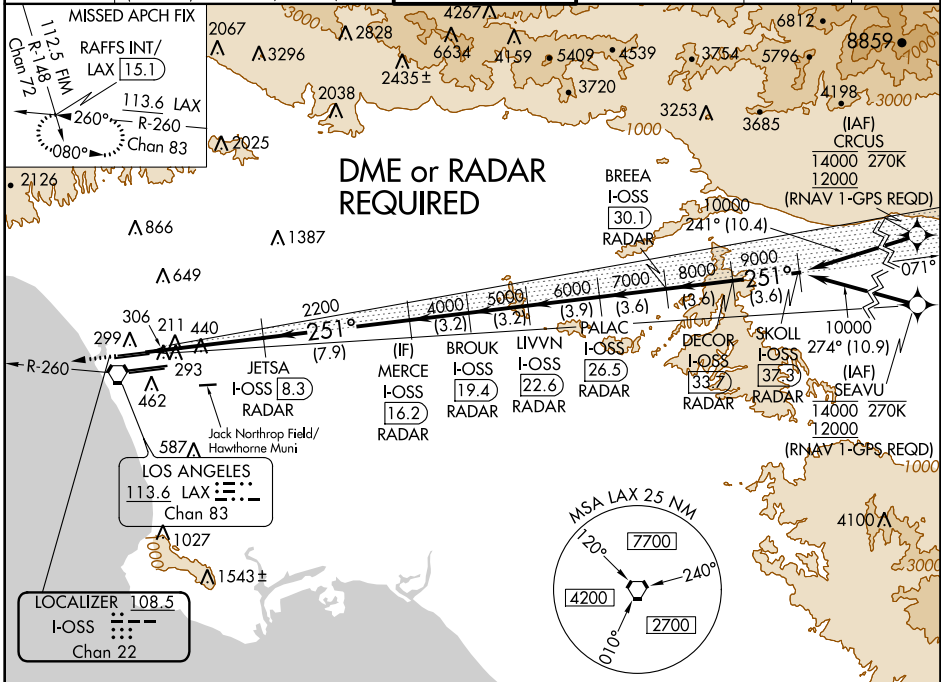
LOC/DME I-OSS 108.5 Chan 22	APP CRS 251°	Rwy Idg TDZE Apt Elev	8925 122 128
---	------------------------	-----------------------------	---

ILS RWY 24R (CAT II & III)

LOS ANGELES INTL (LAX)

<p>▼ DME or RADAR required. Simultaneous approach authorized. Simultaneous approach authorized with HHR.</p>	<p>ALSF-2</p> 	<p>MISSED APPROACH: Climb to 2000 on heading 251° and LAX VORTAC R-260 to RAFFS INT/LAX 15.1 DME and hold.</p>
---	---	--

<p>D-ATIS ARR 133.8 DEP 135.65</p>	<p>SOCL APP CON ARR 124.3 363.2 (APCH FM WEST) 124.5 235.975 (225°-044°)</p>	<p>LOS ANGELES TOWER N 133.9 239.3 S 120.95 379.1</p>	<p>GND CON N 121.65 327.0 S 121.75 327.0 W 121.4 327.0</p>	<p>CLNC DEL 120.35 327.0</p>	<p>CPDLC</p>
--	--	---	---	--	--------------



SW-3, 28 FEB 2019 to 28 MAR 2019

SW-3, 28 FEB 2019 to 28 MAR 2019

ELEV 128	D	TDZE 122	2000	LAX R-260	RAFFS INT	<p>VGSI and ILS glidepath not coincident (VGSI Angle 3.00/TCH 73).</p>	<p>SKOLL I-OSS (37.3) RADAR</p> <p>BREA I-OSS (30.1) RADAR</p> <p>DECOR I-OSS (33.7) RADAR</p> <p>PALAC I-OSS (26.5) RADAR</p> <p>LIVVN I-OSS (22.6) RADAR</p> <p>BROC I-OSS (19.4) RADAR</p> <p>MERCE I-OSS (16.2) RADAR</p> <p>JETSA I-OSS (8.3) RADAR</p>				
			<p>hdg 251°</p>				<p>10000</p> <p>9000</p> <p>8000</p> <p>7000</p> <p>6000</p> <p>5000</p> <p>4000</p> <p>2200</p>				
			<p>GS 3.00°</p> <p>TCH 55</p>								
			1025'	6.4 NM	7.9 NM	3.2 NM	3.2 NM	3.9 NM	3.6 NM	3.6 NM	3.6 NM
			CATEGORY	A	B	C	D				
S-ILS 24R			CAT II RA 118/12 100 DA 222								
S-ILS 24R			CAT III RVR 06								

LOS ANGELES, CALIFORNIA Amdt 26 12OCT17

LOS ANGELES INTL (LAX)

33°57'N-118°24'W

ILS RWY 24R (CAT II & III)