

# DARRK TWO DEPARTURE (RNAV)

AL-237 (FAA)

LOS ANGELES INTL (LAX)  
LOS ANGELES, CALIFORNIA

SW-3, 28 FEB 2019 to 28 MAR 2019

**TOP ALTITUDE:**  
**FL230**

### TAKEOFF MINIMUMS

Rwys 6L/R, 7L/R: NA - ATC.

Rwys 24L/R, 25L/R: Standard with a minimum climb

of 500' per NM to 640'.

NOTE: RNAV 1.

NOTE: RADAR required.

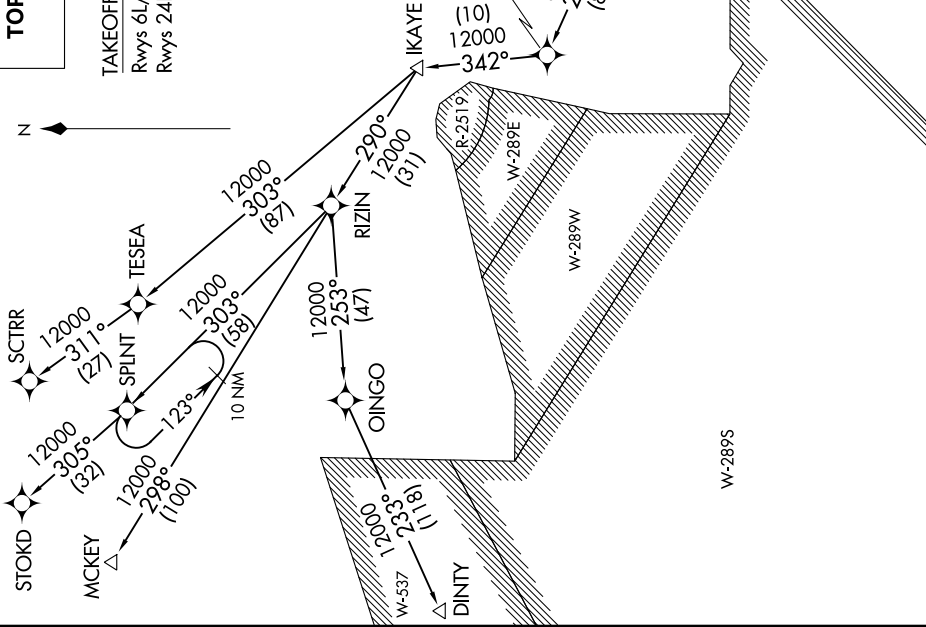
NOTE: STOKD, SCTRR and MCKEY transitions:

DME/DME/IRU or GPS required.

NOTE: DINTY transitions: GPS only.

NOTE: Turbojet aircraft only.

D-ATIS DEP 135.65  
CLNC DEL 120.35 327.0  
CPDLC  
GND CON  
(N) 121.65 327.0  
(S) 121.75 327.0  
(W) 121.4 327.0  
(M) 121.4 327.0  
LOS ANGELES TOWER  
(N) 133.9 239.3  
(S) 120.95 379.1  
SOCAL DEP CON  
(S) 124.3 363.2 (045°-224°)  
125.2 263.025 (225°-044°)



(NARRATIVE ON FOLLOWING PAGE)

NOTE: Chart not to scale.

SW-3, 28 FEB 2019 to 28 MAR 2019

# DARRK TWO DEPARTURE (RNAV)

LOS ANGELES, CALIFORNIA  
LOS ANGELES INTL (LAX)