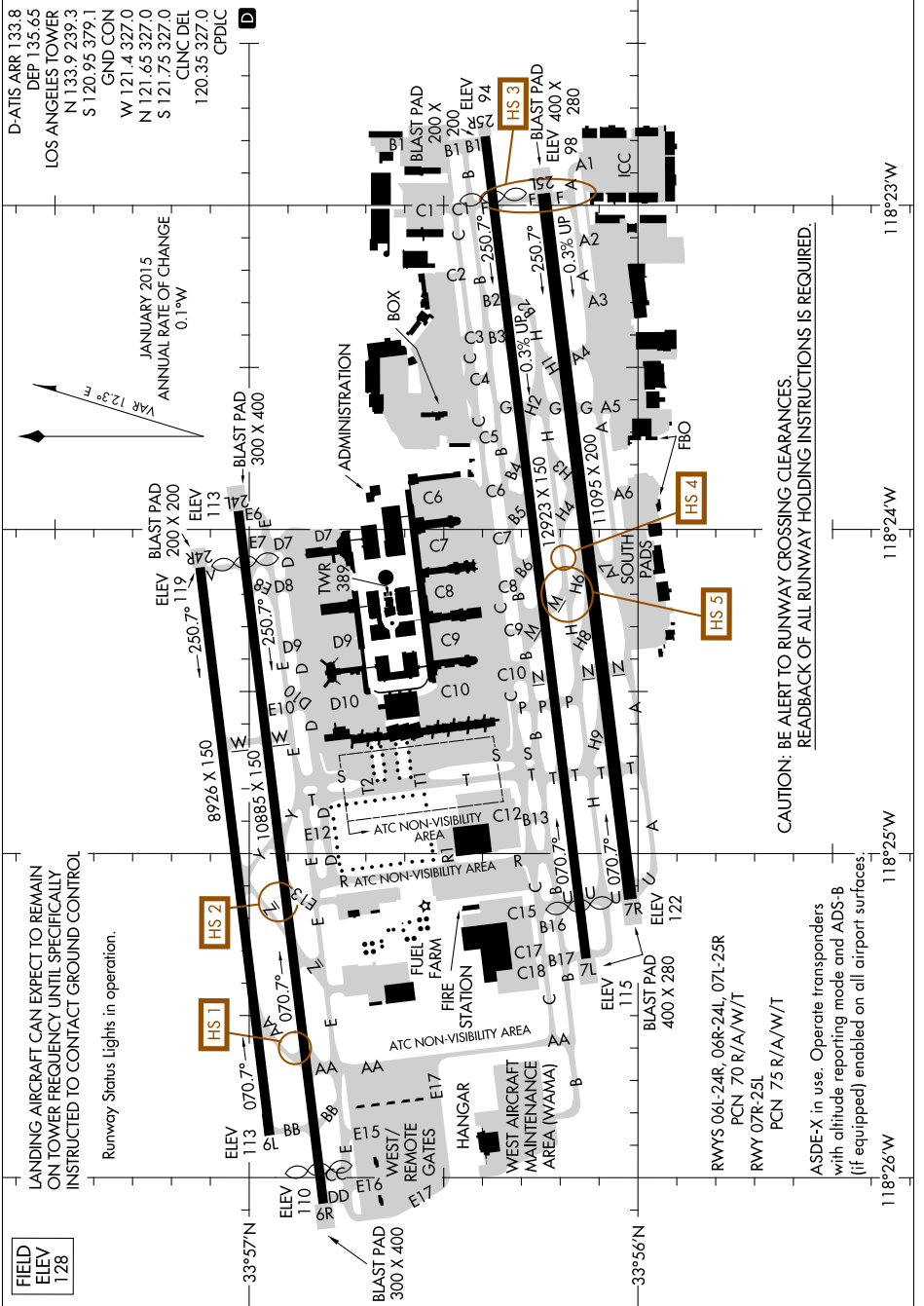


# AIRPORT DIAGRAM

AL-237 (FAA)

LOS ANGELES INTL (LAX)  
LOS ANGELES, CALIFORNIA

SW-3, 28 FEB 2019 to 28 MAR 2019

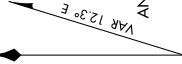


FIELD
ELEV
128

LANDING AIRCRAFT CAN EXPECT TO REMAIN ON TOWER FREQUENCY UNTIL SPECIFICALLY INSTRUCTED TO CONTACT GROUND CONTROL

Runway Status Lights in operation.

JANUARY 2015  
ANNUAL RATE OF CHANGE  
0.1"W



D-ATIS ARR 133.8  
DEP 135.65  
LOS ANGELES TOWER  
N 133.9 239.3  
S 120.95 379.1  
GND CON  
W 121.4 327.0  
N 121.65 327.0  
S 121.75 327.0  
CLNC DEL  
120.35 327.0  
CPDLC

CAUTION: BE ALERT TO RUNWAY CROSSING CLEARANCES  
READBACK OF ALL RUNWAY HOLDING INSTRUCTIONS IS REQUIRED.

ASDE-X in use. Operate transponders with altitude reporting mode and ADS-B (if equipped) enabled on all airport surfaces.

RWYS 06L-24R, 06R-24L, 07L-25R  
PCN 70 R/A/W/T  
RWY 07R-25L  
PCN 75 R/A/W/T

# AIRPORT DIAGRAM

LOS ANGELES, CALIFORNIA  
LOS ANGELES INTL (LAX)

SW-3, 28 FEB 2019 to 28 MAR 2019