

WAAS CH 45925 W22A	APP CRS 215°	Rwy Idg TDZE 16 Apt Elev 19	8806
--	------------------------	---	-------------

RNAV (GPS) RWY 22L

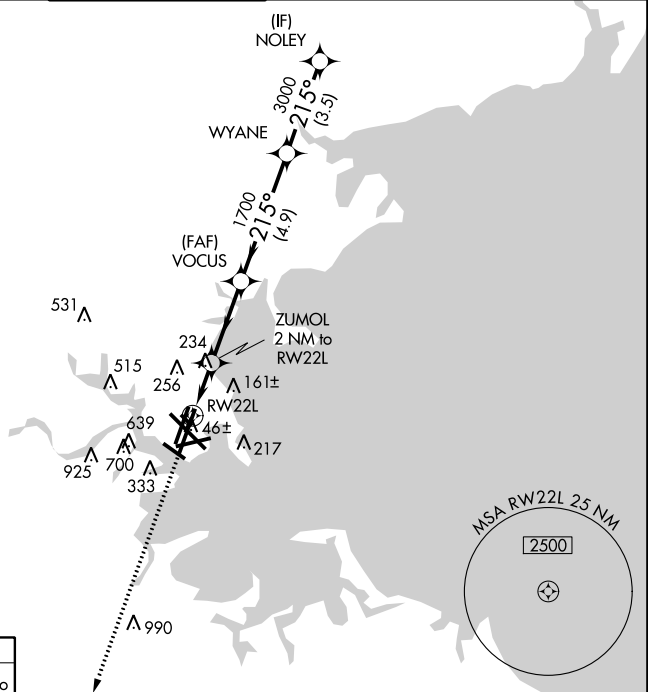
GENERAL EDWARD LAWRENCE LOGAN INTL (BOS)

⚠ DME/DME RNP-0.3 NA. Circling NA to Rwy 14. Circling NA for Cats C and D west of Rwy 4L and 15R. For inoperative ALS, increase LNAV/VNAV Cat D visibility to RVR 6000 and LNAV Cat D visibility to 1½ SM. For uncompensated Baro-VNAV systems, LNAV/VNAV NA below -13°C (9°F) or above 43°C (109°F).

MALSF MISSED APPROACH: Climb to 3000 direct WINNI and hold.

D-ATIS 135.0	BOSTON APP CON 120.6 263.1	BOSTON TOWER 128.8 257.8	GND CON 121.9	CLNC DEL 121.65 257.8	CPDLC
------------------------	--------------------------------------	------------------------------------	-------------------------	---------------------------------	-------

RADAR REQUIRED



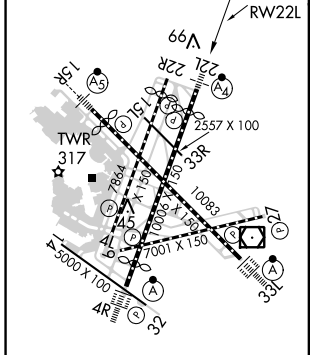
MISSED APCH FIX

WINNI Δ 1447

Δ 038° Δ 218°

4 NM

ELEV 19	D	TDZE 16
---------	----------	---------



TDZ/CL Rwy 4R, 15R and 33L
 REIL Rwy 4L, 27 and 32
 MIRL Rwy 15L-33R
 HIRL Rwy 4L-22R, 4R-22L,
 9-27, 14-32 and 15R-33L

3000 WINNI VGSi and RNAV glidepath not coincident (VGSi Angle 3.00/TCH 71).

*LNAV only.

ZUMOL 2 NM to RW22L

VOCUS 1700

WYANE 3000

NOLEY 4000

GP 3.00° TCH 55

1.4 NM 0.6 3.1 NM 4.9 NM 3.5 NM

CATEGORY	A	B	C	D
LPV DA		216/40	200 (200-¾)	
LNAV/VNAV DA		408/50	392 (400-1)	
LNAV MDA	540/40	524 (600-¾)	540-1¼	524 (600-1¼)
CIRCLING	960-1¼ 941 (1000-1¼)	1060-1½ 1041 (1100-½)	640-1¾ 621 (700-1¾)	640-2 621 (700-2)

NE-1, 28 FEB 2019 to 28 MAR 2019

NE-1, 28 FEB 2019 to 28 MAR 2019