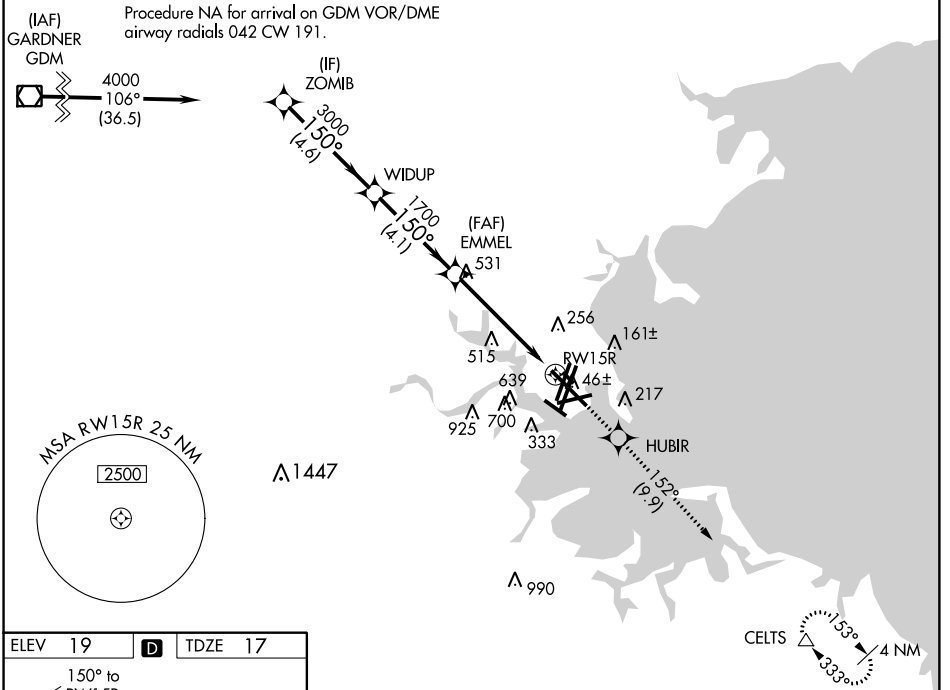


WAAS CH <b>42925</b> <b>W15A</b>	APP CRS <b>150°</b>	Rwy Idg TDZE Apt Elev	<b>9201</b> <b>17</b> <b>19</b>
--	------------------------	-----------------------------	---------------------------------------

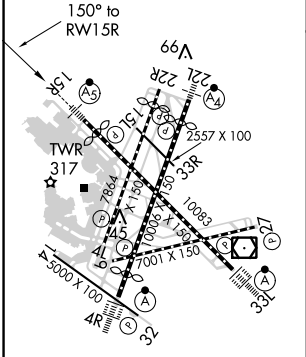
# RNAV (GPS) RWY 15R

GENERAL EDWARD LAWRENCE LOGAN INTL (BOS)

<p><b>⚠</b> DME/DME RNP-0.3 NA. Circling NA to Rwy 14. Circling NA for Cats C and D west of Rws 4L and 15R. For inoperative ALS, increase LNAV Cats C and D visibility to 1½ SM. For uncompensated Baro-VNAV systems, LNAV/VNAV NA below -13°C (9°F) or above 43°C (109°F).</p>	MALSR	MISSED APPROACH: Climb to 3000 direct HUBIR and on track 152° to CELTS and hold.						
	<table border="1"> <tr> <td>D-ATIS <b>135.0</b></td> <td>BOSTON APP CON <b>120.6 263.1</b></td> <td>BOSTON TOWER <b>128.8 257.8</b></td> <td>GND CON <b>121.9</b></td> <td>CLNC DEL <b>121.65 257.8</b></td> <td>CPDLC</td> </tr> </table>	D-ATIS <b>135.0</b>	BOSTON APP CON <b>120.6 263.1</b>	BOSTON TOWER <b>128.8 257.8</b>	GND CON <b>121.9</b>	CLNC DEL <b>121.65 257.8</b>	CPDLC	
D-ATIS <b>135.0</b>	BOSTON APP CON <b>120.6 263.1</b>	BOSTON TOWER <b>128.8 257.8</b>	GND CON <b>121.9</b>	CLNC DEL <b>121.65 257.8</b>	CPDLC			



ELEV 19	<b>D</b>	TDZE 17
---------	----------	---------



TDZ/CL Rws 4R, 15R and 33L  
 REIL Rws 4L, 27 and 32  
 MIRL Rwy 15L-33R  
 HIRL Rws 4L-22R, 4R-22L, 9-27, 14-32 and 15R-33L

VGSI and RNAV glidepath not coincident (VGSI Angle 3.00/TCH 71).

3000	HUBIR	CELTS
↑	✦	△
	tr 152°	

\*LNAV only.

ZOMB	WIDUP	EMMEL	RWY 15R
4000	1700	1700	
GP 3.00°			
TCH 60			
4.6 NM	4.1 NM	3.4 NM	1.7 NM

CATEGORY	A	B	C	D
LPV DA		217/18	200 (200-½)	
LNAV/ VNAV DA		567-1½	550 (600-1½)	
LNAV MDA	620/24	603 (700-½)	620-1½	603 (700-1½)
CIRCLING	960-1¼ 941 (1000-1¼)	1060-1½ 1041 (1100-½)	640-1¾ 621 (700-1¾)	640-2 621 (700-2)

NE-1, 28 FEB 2019 to 28 MAR 2019

NE-1, 28 FEB 2019 to 28 MAR 2019