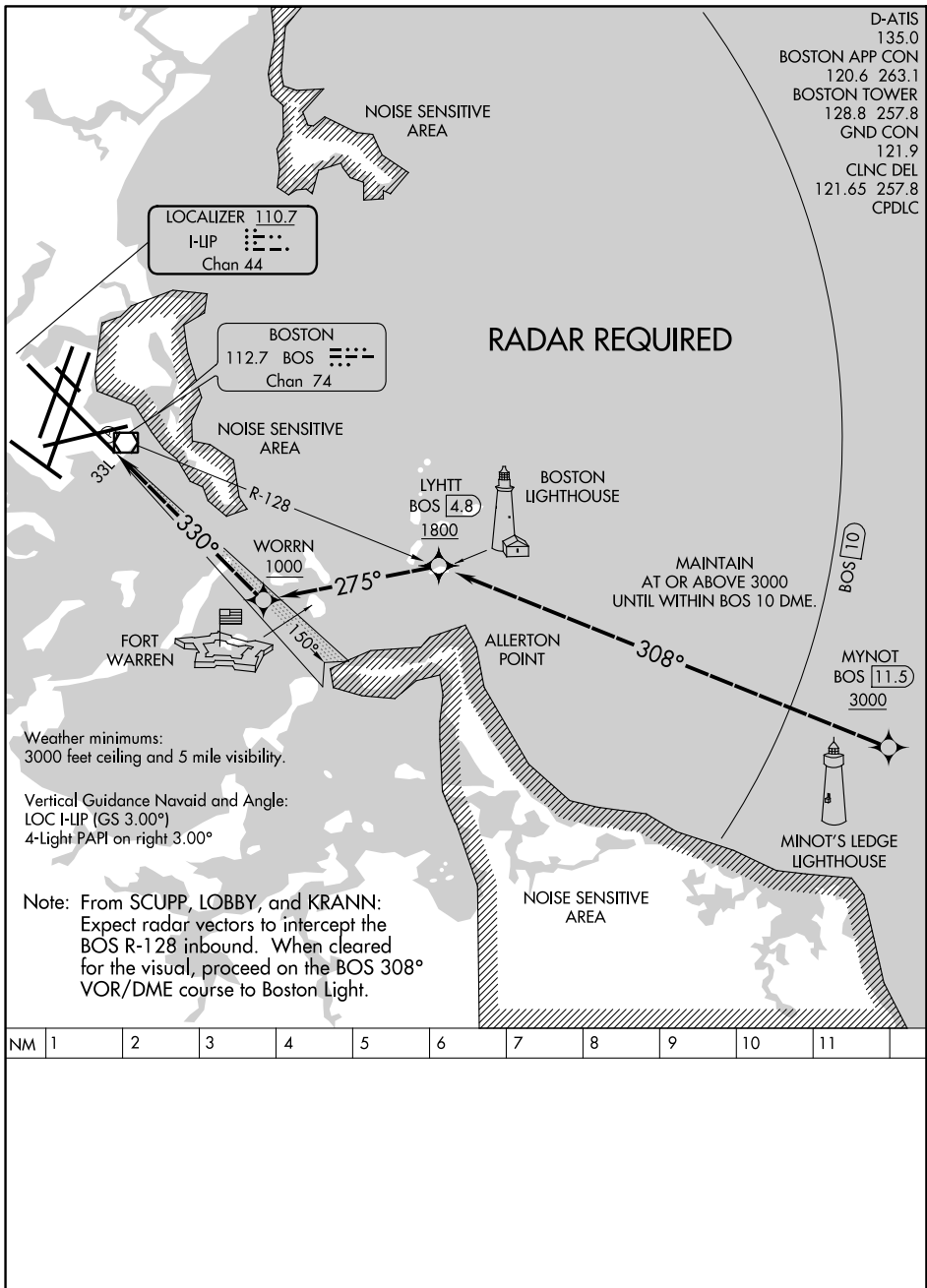


LIGHT VISUAL RWY 33L

GENERAL EDWARD LAWRENCE LOGAN INTL (BOS)
AL-58 (FAA) BOSTON, MASSACHUSETTS



NE-1, 28 FEB 2019 to 28 MAR 2019

NE-1, 28 FEB 2019 to 28 MAR 2019

LIGHT VISUAL RWY 33L

Amdt 1A 12OCT17

BOSTON, MASSACHUSETTS
GENERAL EDWARD LAWRENCE LOGAN INTL (BOS)
42°22'N-71°00'W