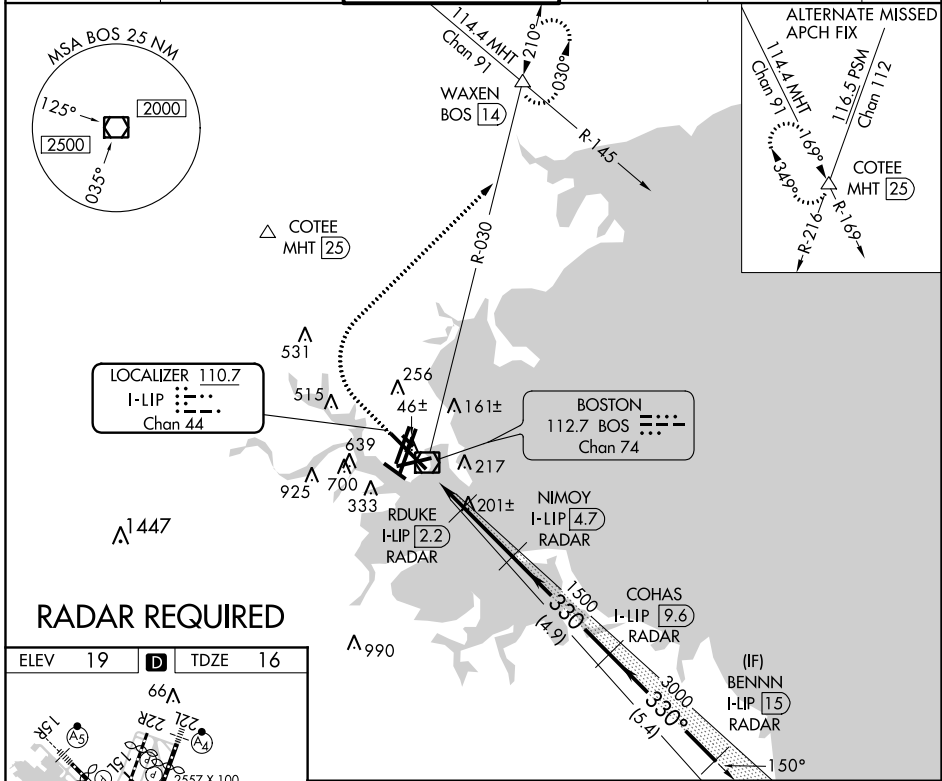


LOC/DME I-LIP	APP CRS	Rwy Idg	<b>10083</b>
<b>110.7</b>	<b>330°</b>	TDZE	<b>16</b>
Chan <b>44</b>		Apt Elev	<b>19</b>

# ILS or LOC RWY 33L

GENERAL EDWARD LAWRENCE LOGAN INTL (BOS)

<p>DME or RADAR required. Circling NA for Cats C and D west of Rwys 4L and 15R. Circling NA to Rwy 14.</p>	<p>ALSIF-2</p>	<p>MISSED APPROACH: Climb to 1500 then climbing right turn to 3000 on BOS VOR/DME R-030 to WAXEN INT/BOS 14 DME and hold.</p>					
		D-ATIS	BOSTON APP CON	BOSTON TOWER	GND CON	CLNC DEL	CPDLC
		<b>135.0</b>	<b>120.6 263.1</b>	<b>128.8 257.8</b>	<b>121.9</b>	<b>121.65 257.8</b>	



ELEV	19	<b>D</b>	TDZE	16	
<p>TDZ/CL Rwys 4R, 15R and 33L REIL Rwys 4L, 27 and 32 MIRL Rwy 15L-33R 330° 4.5 NM HIRL Rwys 4L-22R, 4R-22L, from FAF 9-27, 14-32 and 15R-33L FAF to MAP 4.5 NM</p>					
Knots	60	90	120	150	180
Min:Sec	4:30	3:00	2:15	1:48	1:30

1500	3000	WAXEN	VGSIL and ILS glidepath not coincident (VGSIL Angle 3.00/TCH 68).		BENNN	
↑		BOS R-030	NIMOY I-LIP 4.7 RADAR	COHAS I-LIP 9.6 RADAR	I-LIP 15 RADAR	
*LOC only.						
I-LIP 0.2	*I-LIP 1.4	RDUKE I-LIP 2.2 RADAR	1500	3000	4000	
CATEGORY	A		B		D	
S-ILS 33L			216/18		200 (200-½)	
S-LOC 33L	460/24		444 (500-½)		460/45 444 (500-¾)	
CIRCLING	960-1¼ 941 (1000-1¼)		1060-1½ 1041 (1100-½)		640-1¾ 621 (700-¾)	640-2 621 (700-2)

NE-1, 28 FEB 2019 to 28 MAR 2019

NE-1, 28 FEB 2019 to 28 MAR 2019