

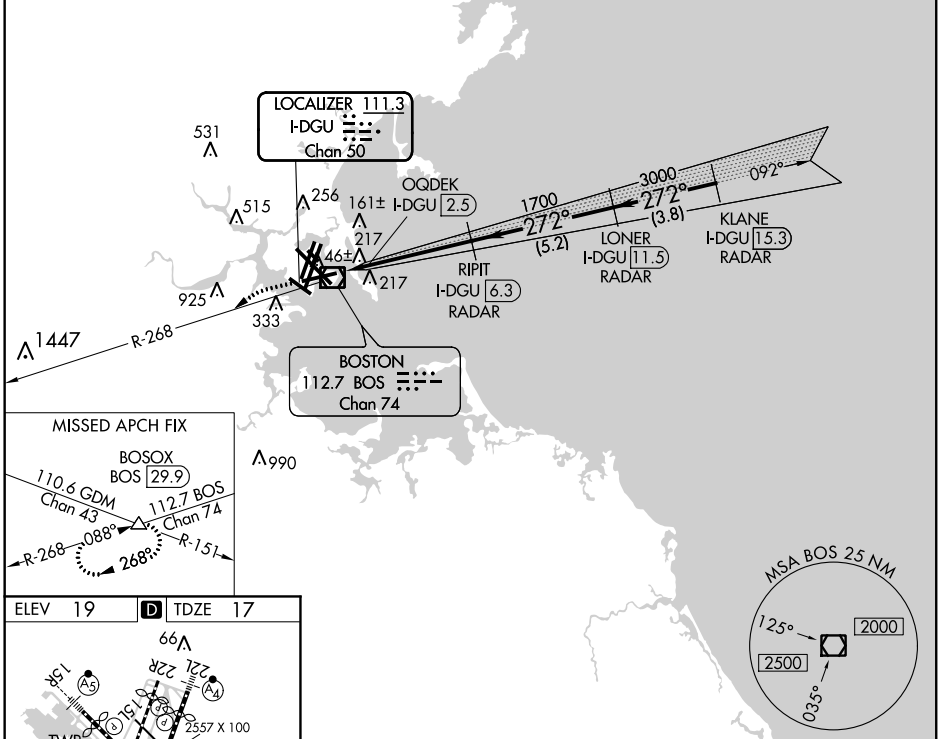
LOC/DME I-DGU 111.3 Chan 50	APP CRS 272°	Rwy ldg 7000 TDZE 17 Apt Elev 19
--	------------------------	---

ILS or LOC RWY 27

GENERAL EDWARD LAWRENCE LOGAN INTL (BOS)

<p>Circling to Rwy 14 NA. Circling NA for Cats C and D west of Rwys 4L and 15R.</p>	<p>MISSED APPROACH: Climb to 3000 on BOS VOR/DME R-268 to BOSOX INT/BOS 29.9 DME and hold.</p>				
	D-ATIS 135.0	BOSTON APP CON 120.6 263.1	BOSTON TOWER 128.8 257.8	GND CON 121.9	CLNC DEL 121.65 257.8

RADAR REQUIRED



ELEV 19	D	TDZE 17			
<p>TDZ/CL Rws 4R, 15R and 33L REIL Rws 4L, 27 and 32 MIRL Rwy 15L-33R HIRL Rws 4L-22R, 4R-22L, 9-27, 14-32 and 15R-33L</p>					
<p>FAF to MAP 3.8 NM</p>					
Knots	60	90	120	150	180
Min:Sec	3:48	2:32	1:54	1:31	1:16

3000	BOSOX	VGSI and ILS glidepath not coincident (VGSI Angle 3.00/TCH 71).		LONER I-DGU 11.5 RADAR	KLANE I-DGU 15.3 RADAR
BOS R-268		RIPIT I-DGU 6.3 RADAR			
		OGDEK I-DGU 2.5	1700	1700	4000
			3000		
					GS 3.00° TCH 57'
		1.2	3.8 NM	5.2 NM	3.8 NM
CATEGORY	A	B	C	D	
S-ILS 27		460-1½	443 (500-1½)		
S-LOC 27		460-1½	443 (500-1½)		
CIRCLING	960-1½ 941 (1000-1½)	1060-1½ 1041 (1100-1½)	640-1¾ 621 (700-1¾)	640-2 621 (700-2)	

NE-1, 28 FEB 2019 to 28 MAR 2019

NE-1, 28 FEB 2019 to 28 MAR 2019