

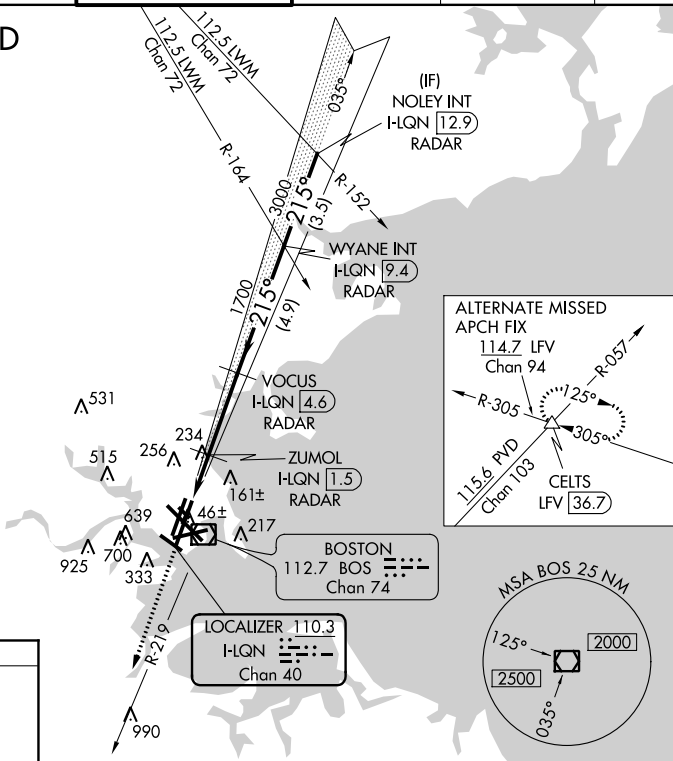
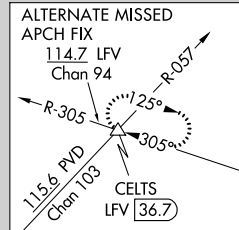
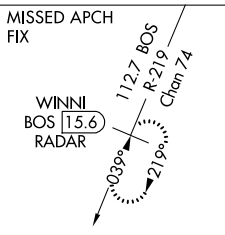
LOC/DME I-LQN <b>110.3</b> Chan 40	APP CRS <b>215°</b>	Rwy Idg <b>8806</b> TDZE <b>16</b> Apt Elev <b>19</b>
--	------------------------	---

# ILS or LOC RWY 22L

GENERAL EDWARD LAWRENCE LOGAN INTL (BOS)

<p><b>⚠</b> DME or RADAR required. Circling NA for Cats C and D west of Rws 4L and 15R. Circling NA to Rwy 14. For inoperative ALS, increase S-LOC 22L Cat D visibility to 1½ mile.</p>	MALSF	<p>MISSED APPROACH: Climb to 3000 on BOS VOR/DME R-219 to WINNI/ BOS 15.6 DME/RADAR and hold.</p>			
	<p>D-ATIS <b>135.0</b></p>	<p>BOSTON APP CON <b>120.6 263.1</b></p>	<p>BOSTON TOWER <b>128.8 257.8</b></p>	<p>GND CON <b>121.9</b></p>	<p>CLNC DEL <b>121.65 257.8</b></p>

## RADAR REQUIRED



ELEV 19	TDZE 16
<p>215° 5.1 NM from FAF</p>	
<p>TDZ/CL Rws 4R, 15R and 33L REIL Rws 4L, 27 and 32 MIRL Rwy 15L-33R HIRL Rws 4L-22R, 4R-22L, 9-27, 14-32 and 15R-33L</p>	
<p>FAF to MAP 5.1 NM</p>	
Knots	60 90 120 150 180
Min:Sec	5:06 3:24 2:33 2:02 1:42

<p>3000 BOS R-219 *LOC only.</p>	<p>WINNI BOS 15.6 *LOC only.</p>	<p>VGSI and ILS glidepath not coincident (VGSI Angle 3.00/TCH 71). VOCUS I-LQN 4.6 RADAR ZUMOL I-LQN 1.5 RADAR</p>	<p>WYANE INT I-LQN 9.4 RADAR NOLEY INT I-LQN 12.9 RADAR</p>	
<p>H-LQN DME ANT. *H-LQN 0.9</p>				
<p>1700 215° 4000 3000 GS 3.00° TCH 55</p>				
CATEGORY	A	B	C	D
S-ILS 22L	216/40 200 (200-¾)			
S-LOC 22L	540/40	524 (600-¾)	540-1¼	524 (600-1¼)
CIRCLING	960-1¼ 941 (1000-1¼)	1060-1½ 1041 (1100-1½)	640-1¾ 621 (700-1¾)	640-2 621 (700-2)

NE-1, 28 FEB 2019 to 28 MAR 2019

NE-1, 28 FEB 2019 to 28 MAR 2019