

|                |             |          |             |
|----------------|-------------|----------|-------------|
| LOC/DME I-MDC  | APP CRS     | Rwy Idg  | <b>9201</b> |
| <b>110.7</b>   | <b>149°</b> | TDZE     | <b>17</b>   |
| Chan <b>44</b> |             | Apt Elev | <b>19</b>   |

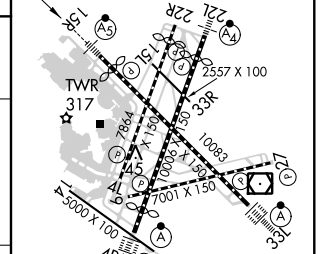
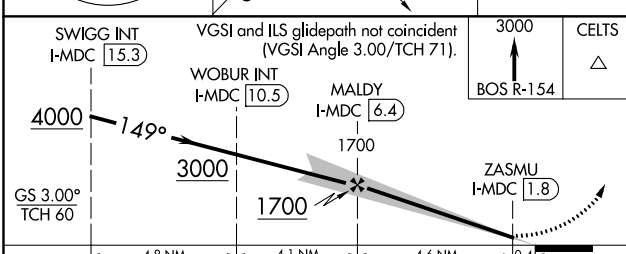
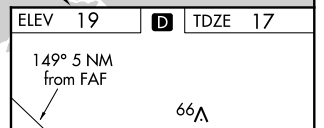
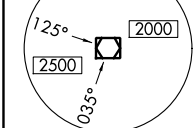
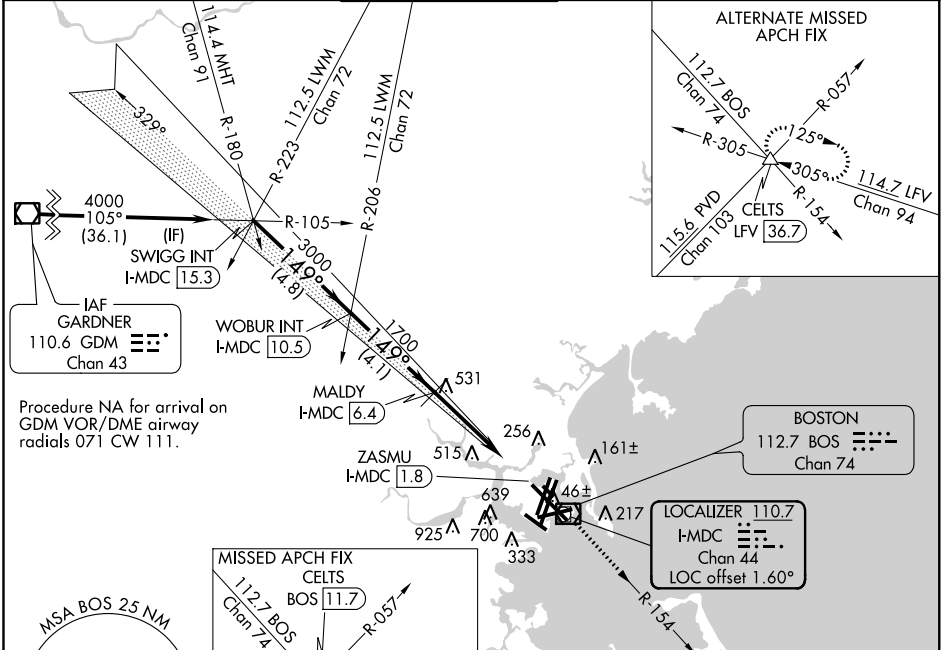
# ILS or LOC RWY 15R

GENERAL EDWARD LAWRENCE LOGAN INTL (BOS)

**MAJLSR** MISSED APPROACH: Climb to 3000 on BOS VOR/DME R-154 to CELTS INT/BOS 11.7 DME and hold.

**W** DME required. Circling NA for Cats C and D west of Rwy 4L and 15R. Circling NA to Rwy 14.

|              |                    |                    |              |                     |       |
|--------------|--------------------|--------------------|--------------|---------------------|-------|
| D-ATIS       | BOSTON APP CON     | BOSTON TOWER       | GND CON      | CLNC DEL            | CPDLC |
| <b>135.0</b> | <b>120.6 263.1</b> | <b>128.8 257.8</b> | <b>121.9</b> | <b>121.65 257.8</b> |       |



| CATEGORY  | A                       | B                         | C                      | D                    |
|-----------|-------------------------|---------------------------|------------------------|----------------------|
| S-ILS 15R | 267/24 250 (300-½)      |                           |                        |                      |
| S-LOC 15R | 600/24                  | 583 (600-½)               | 600-1¼                 | 583 (600-1¼)         |
| CIRCLING  | 960-1¼<br>941 (1000-1¼) | 1060-1½<br>1041 (1100-1½) | 640-1¾<br>621 (700-1¾) | 640-2<br>621 (700-2) |

TDZ/CL Rwy 4R, 15R and 33L  
 REIL Rwy 4L, 27 and 32  
 MIRL Rwy 15L-33R  
 HIRL Rwy 4L-22R, 4R-22L, 9-27, 14-32 and 15R-33L

NE-1, 28 FEB 2019 to 28 MAR 2019

NE-1, 28 FEB 2019 to 28 MAR 2019