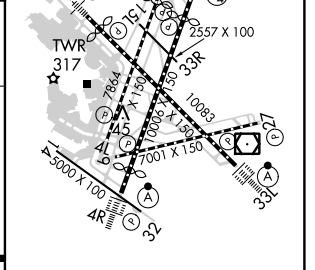
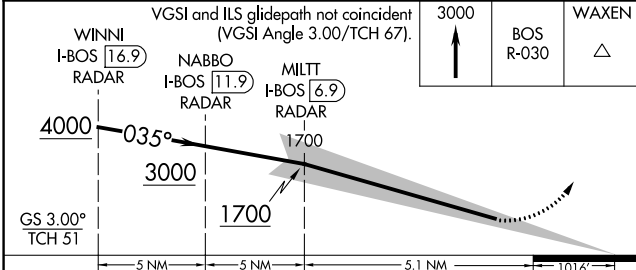
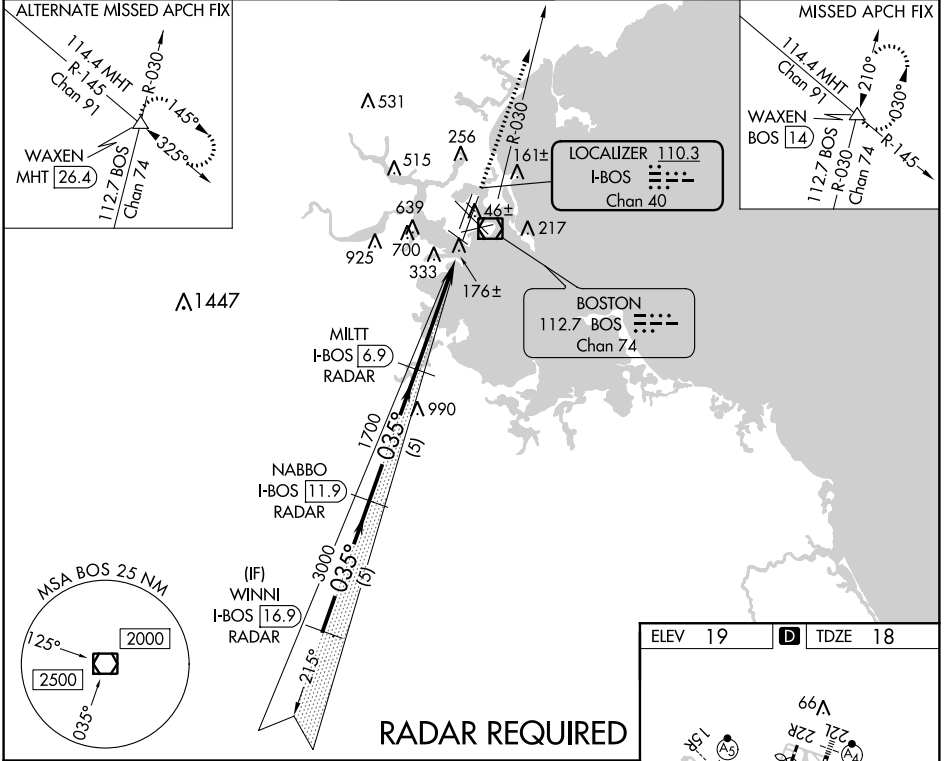


| | | |
|---|------------------------|---|
| LOC/DME I-BOS 110.3 Chan 40 | APP CRS 035° | Rwy Idg 8851 TDZE 18 Apt Elev 19 |
|---|------------------------|---|

ILS RWY 4R (SA CAT I)

GENERAL EDWARD LAWRENCE LOGAN INTL (BOS)

| | | | | | |
|---|------------------------|---|------------------------------------|-------------------------|---------------------------------|
| When control tower reports tall vessels in approach area, procedure NA. Requires specific OPSPEC, MPSEC, or LOA approval and use of HUD to DH. | ALSf-2 | MISSED APPROACH: Climb to 3000 on BOS VOR/DME R-030 to WAXEN INT/BOS 14 DME and hold. | | | |
| | D-ATIS 135.0 | BOSTON APP CON 120.6 263.1 | BOSTON TOWER 128.8 257.8 | GND CON 121.9 | CLNC DEL 121.65 257.8 |



| | | | | |
|----------|----------------------|---|---|---|
| CATEGORY | A | B | C | D |
| S-ILS 4R | RA 168/14 150 DA 168 | | | |

SA CATEGORY I ILS - SPECIAL AIRCREW & AIRCRAFT CERTIFICATION REQUIRED

TDZ/CL Rwy's
4R, 15R and 33L
REIL Rwy's 4L, 27 and 32
MIRL Rwy 15L-33R
HIRL Rwy's 4L-22R, 4R-22L,
9-27, 14-32 and 15R-33L

NE-1, 28 FEB 2019 to 28 MAR 2019

NE-1, 28 FEB 2019 to 28 MAR 2019