

LOC/DME I-BOS 110.3 Chan 40	APP CRS 035°	Rwy Idg 8851 TDZE 18 Apt Elev 19
---	------------------------	---

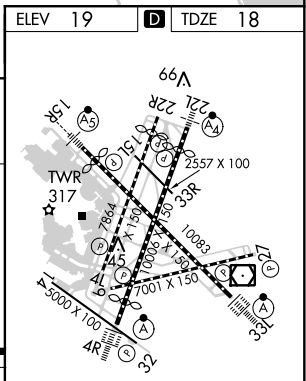
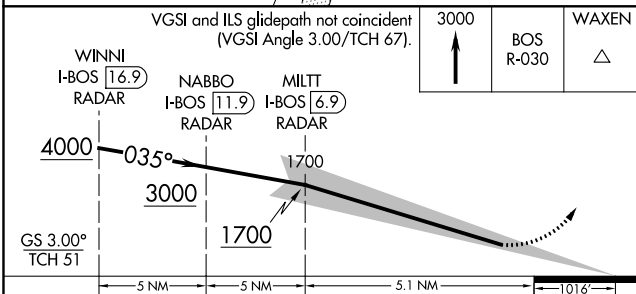
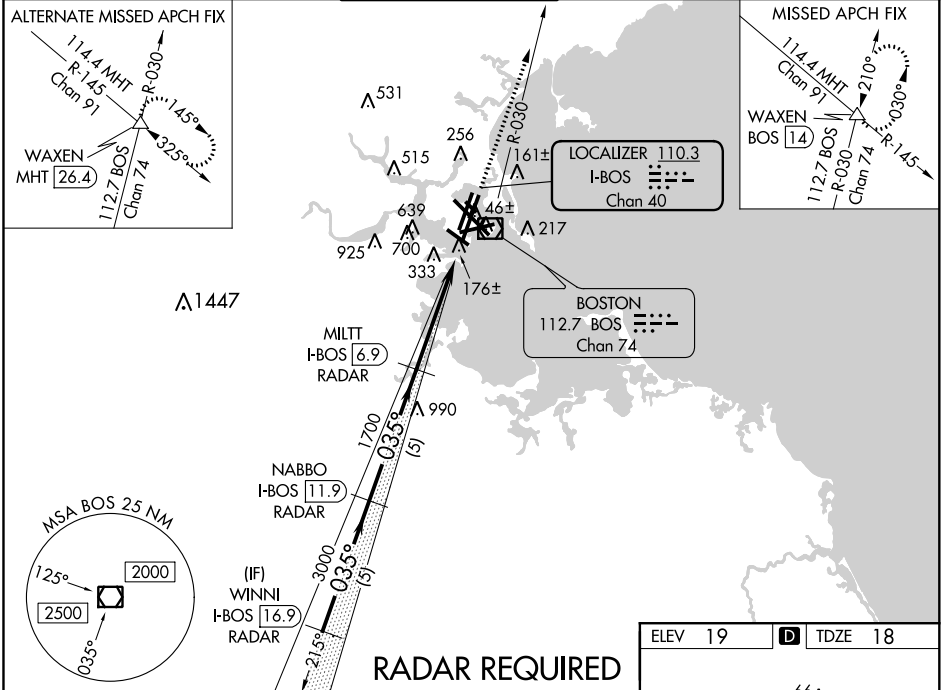
ILS RWY 4R (CAT II & III)

GENERAL EDWARD LAWRENCE LOGAN INTL (BOS)

⚠ When control tower reports tall vessels in approach area, procedure NA.
⚠ CAT II: RVR 1000 authorized with specific OPSPEC, MPSEC, or LOA approval and use of outland or HUD to touchdown.

ALSF-2
(A) MISSED APPROACH: Climb to 3000 on BOS VOR/DME R-030 to WAXEN INT/ BOS 14 DME and hold.

D-ATIS 135.0	BOSTON APP CON 120.6 263.1	BOSTON TOWER 128.8 257.8	GND CON 121.9	CLNC DEL 121.65 257.8	CPDLC
------------------------	--------------------------------------	------------------------------------	-------------------------	---------------------------------	-------



CATEGORY	A	B	C	D
S-ILS 4R	CAT II RA 99/12 100 DA 118			
S-ILS 4R	CAT III RVR 06			

CATEGORY II & III ILS - SPECIAL AIRCREW & AIRCRAFT CERTIFICATION REQUIRED

NE-1, 28 FEB 2019 to 28 MAR 2019

NE-1, 28 FEB 2019 to 28 MAR 2019