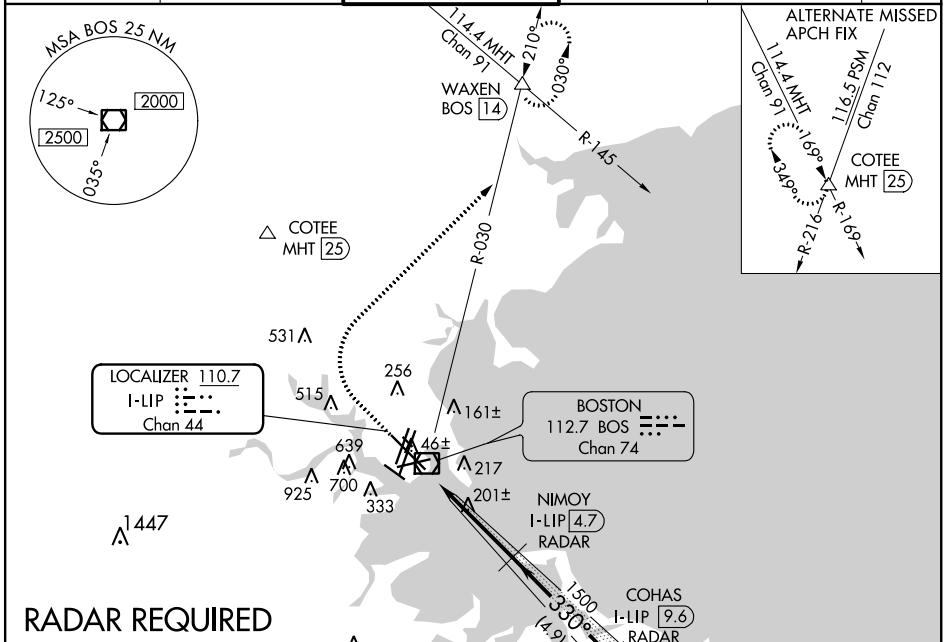


LOC/DME	I-LIP	APP CRS	Rwy Idg	10083
110.7		330°	TDZE	16
Chan 44			Apt Elev	19

ILS RWY 33L (SA CAT I)

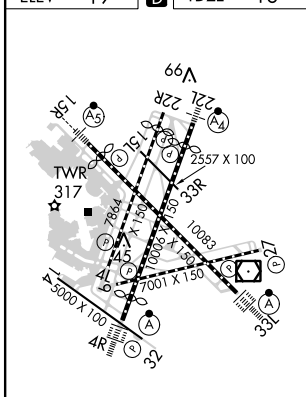
GENERAL EDWARD LAWRENCE LOGAN INTL (BOS)

DME or RADAR required. Requires specific OPSEC, MSPEC, or LOA approval and use of HUD to DH.	ALSIF-2	MISSED APPROACH: Climb to 1500 then climbing right turn to 3000 on BOS VOR/DME R-030 to WAXEN INT/BOS 14 DME and hold.			
		D-ATIS	BOSTON APP CON	BOSTON TOWER	GND CON
135.0	120.6 263.1	128.8 257.8	121.9	121.65 257.8	

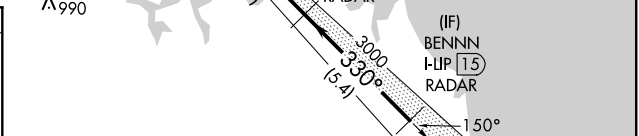


RADAR REQUIRED

ELEV	19	D	TDZE	16
------	-----------	----------	------	-----------



TDZ/CL Rwy 4R, 15R and 33L
 REIL Rwy 4L, 27 and 32
 MIRL Rwy 15L-33R
 HIRL Rwy 4L-22R, 4R-22L, 9-27, 14-32 and 15R-33L



1500	3000	WAXEN	VGSI and ILS glidepath not coincident (VGSI Angle 3.00/TCH 68).	BENNN I-LIP 15 RADAR
			NIMOY I-LIP 4.7 RADAR	COHAS I-LIP 9.6 RADAR
			1500	330° 4000
			1500	3000
			1500	GS 3.00° TCH 57
			976'	4.5 NM
				4.9 NM
				5.4 NM

CATEGORY	A	B	C	D
S-ILS 33L	RA 166/14 150 DA 166			

SA CATEGORY I - SPECIAL AIRCREW & AIRCRAFT CERTIFICATION REQUIRED

NE-1, 28 FEB 2019 to 28 MAR 2019

NE-1, 28 FEB 2019 to 28 MAR 2019