

HYLND FIVE DEPARTURE (RNAV)

AL-58 (FAA)

BOSTON, MASSACHUSETTS

D-ATIS 135.0
CLNC DEL
121.65 257.8
CPDLC
GND CON
121.9
BOSTON TOWER
128.8 257.8
BOSTON DEP CON
133.0

TAKEOFF MINIMUMS:

Rwys 4L, 14, 15L, 32, 33R: NA - ATC
Rwy 4R: Standard with minimum climb of 500' per NM to 3600.
Rwy 9: Standard with minimum climb of 500' per NM to 4000.
Rwys 15R, 22R: Standard with minimum climb of 500' per NM to 520.
Rwy 22L: 300-1 with minimum climb of 500' per NM to 520, or standard with minimum climb of 500' per NM to 520 if tower reports no tall vessels in the departure area.
Rwy 27: Standard with a minimum climb of 500' per NM to 1300.
Rwy 33L: Standard with a minimum climb of 500' per NM to 3100.

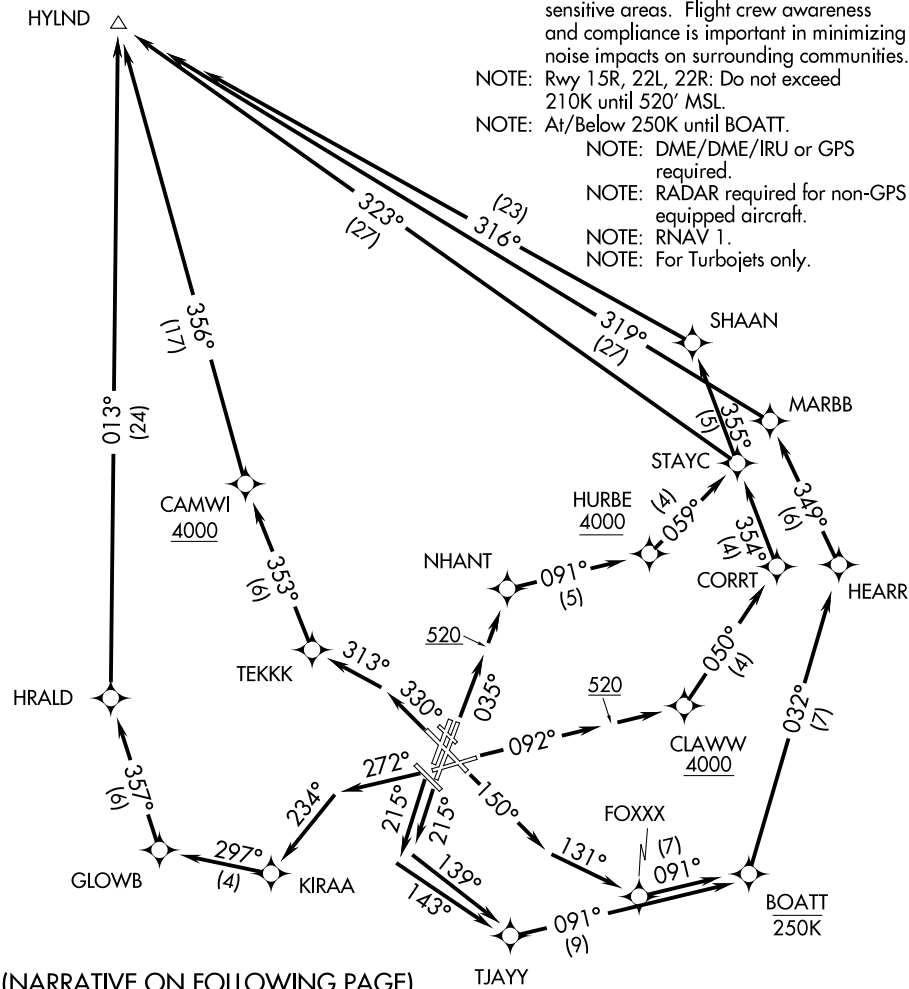
TOP ALTITUDE:
5000

MANCHESTER MHT

- NOTE: Departure hdg/RNAV tracks/vectors are predicated on avoiding noise sensitive areas. Flight crew awareness and compliance is important in minimizing noise impacts on surrounding communities.
- NOTE: Rwy 15R, 22L, 22R: Do not exceed 210K until 520' MSL.
- NOTE: At/Below 250K until BOATT.
- NOTE: DME/DME/IRU or GPS required.
- NOTE: RADAR required for non-GPS equipped aircraft.
- NOTE: RNAV 1.
- NOTE: For Turbojets only.

NE-1, 28 FEB 2019 to 28 MAR 2019

NE-1, 28 FEB 2019 to 28 MAR 2019



(NARRATIVE ON FOLLOWING PAGE)

NOTE: Chart not to scale.

HYLND FIVE DEPARTURE (RNAV)

BOSTON, MASSACHUSETTS