

BLZZR FOUR DEPARTURE (RNAV)

AL-58 (FAA)

BOSTON, MASSACHUSETTS

NE-1, 28 FEB 2019 to 28 MAR 2019

TAKEOFF MINIMUMS:

- Rwys 4L, 14, 15L, 32, 33R: NA-ATC.
- Rwy 4R: Standard with minimum climb of 500' per NM to 3600.
- Rwy 9: Standard with minimum climb of 500' per NM to 4000.
- Rwy 15R: Standard with minimum climb of 500' per NM to 520.
- Rwy 22L: 300-1 with minimum climb of 500' per NM to 520, or standard with minimum climb of 500' per NM to 520 if tower reports no tall vessels in the departure area.
- Rwy 22R: Standard with minimum climb of 500' per NM to 520.
- Rwy 27: Standard with minimum climb of 500' per NM to 1300.
- Rwy 33L: Standard with a minimum climb of 500' per NM to 520.

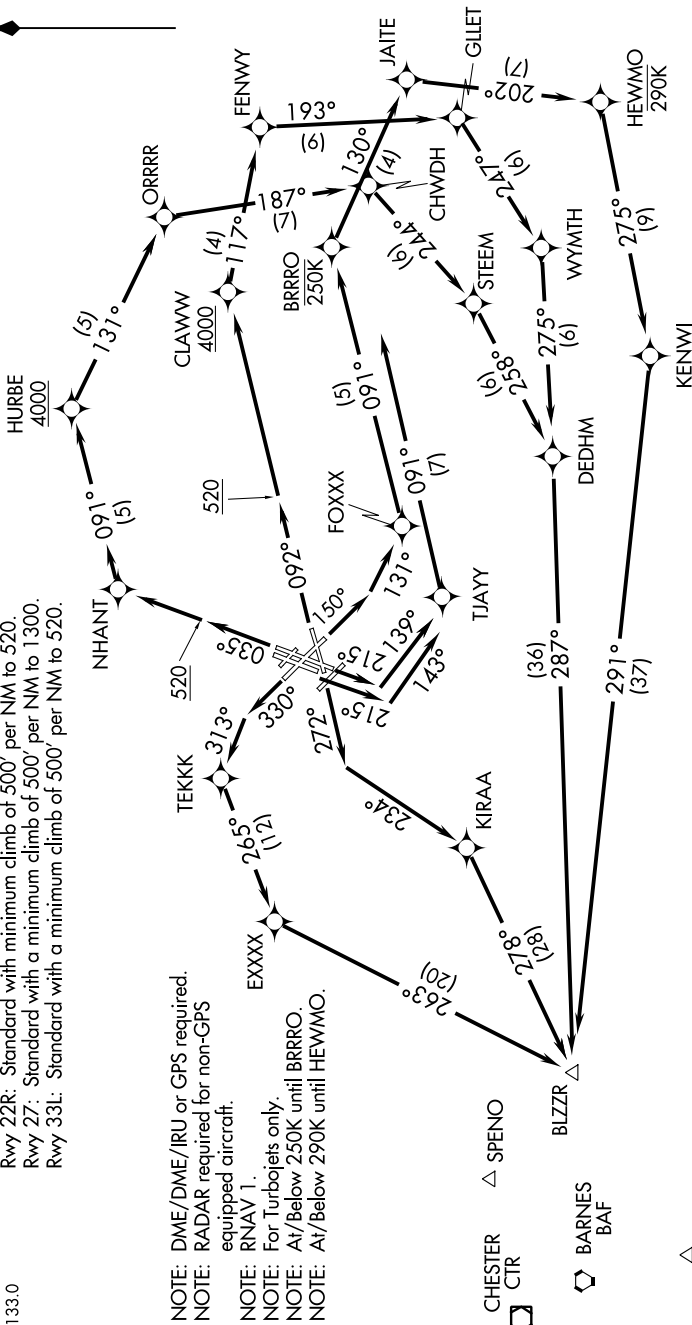
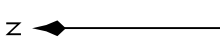
D-ATIS 135.0  
 CLNC DEL 121.65 257.8  
 CPDLC GND CON 121.9  
 BOSTON TOWER 128.8 257.8  
 BOSTON DEP CON 133.0

TOP ALTITUDE: 5000

NOTE: Departure hdg/RNAV tracks/vectors are predicated on avoiding noise sensitive areas. Flight crew awareness and compliance is important in minimizing noise impacts on surrounding communities.  
 Rwy 15R, 22L, 22R: Do not exceed 210K until 520' MSL.

- NOTE: DME/DME/IRU or GPS required.
- NOTE: RADAR required for non-GPS equipped aircraft.
- NOTE: RNAV 1.
- NOTE: For Turbojets only.
- NOTE: At/Below 250K until BRRO.
- NOTE: At/Below 290K until HEWMO.

- CHESTER CTR
- BARNES BAF
- NELIE



NOTE: Chart not to scale.

(NARRATIVE ON FOLLOWING PAGE)

NE-1, 28 FEB 2019 to 28 MAR 2019

BLZZR FOUR DEPARTURE (RNAV)

BOSTON, MASSACHUSETTS

GENERAL EDWARD LAWRENCE LOGAN INTL (BOS)