




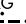
D-ATIS ARR
119.65
ATLANTA APP CON
127.9 379.9

MONTEBELLO
115.3 MOL 
Chan 100
N37°54.03'-W79°06.41'
L-26, H-10-12

VOLUNTEER
116.4 VXV 
Chan 111

SNOWBIRD
108.8 SOT 
Chan 25
N35°47.41'
W83°03.14'
L-25 H-9-12

FOOTHILLS
113.4 ODF 
Chan 81
N34°41.75'-W83°17.86'

SPARTANBURG
115.7 SPA 
Chan 104
N35°02.02'-W81°55.62'
L-24-25, H-9-12

BEBAD
N35°11.20'
W82°41.38'


AVERY
N35°49.06'
W81°53.46'

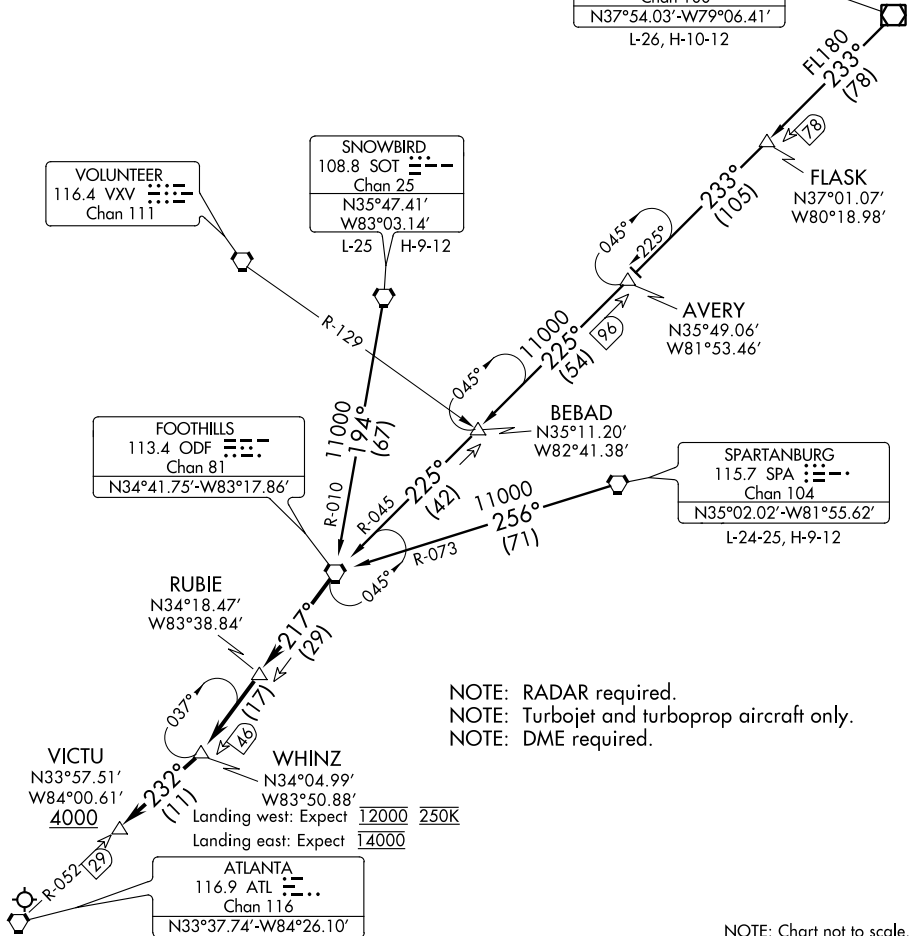
FLASK
N37°01.07'
W80°18.98'

RUBIE
N34°18.47'
W83°38.84'

VICTU
N33°57.51'
W84°00.61'
4000

WHINZ
N34°04.99'
W83°50.88'

ATLANTA
116.9 ATL 
Chan 116
N33°37.74'-W84°26.10'



NOTE: RADAR required.
NOTE: Turbojet and turboprop aircraft only.
NOTE: DME required.

NOTE: Chart not to scale.

ARRIVAL ROUTE DESCRIPTION

MONTEBELLO TRANSITION (MOL.WHINZ4): From over MOL VOR/DME on MOL R-233 to FLASK, then on MOL R-233 and ODF R-045 to AVERY, then on ODF R-045 to ODF VORTAC. Thence. . .

SNOWBIRD TRANSITION (SOT.WHINZ4): From over SOT VORTAC on SOT R-194 and ODF R-010 to ODF VORTAC. Thence. . .

SPARTANBURG TRANSITION (SPA.WHINZ4): From over SPA VORTAC on SPA R-256 and ODF R-073 to ODF VORTAC. Thence. . .

. . . from over ODF VORTAC on ODF R-217 to RUBIE and ODF R-217 to WHINZ, then on ATL R-052 to cross VICTU at or above 4000. Expect RADAR vectors to final approach course after VICTU.

SE-4, 28 FEB 2019 to 28 MAR 2019

SE-4, 28 FEB 2019 to 28 MAR 2019