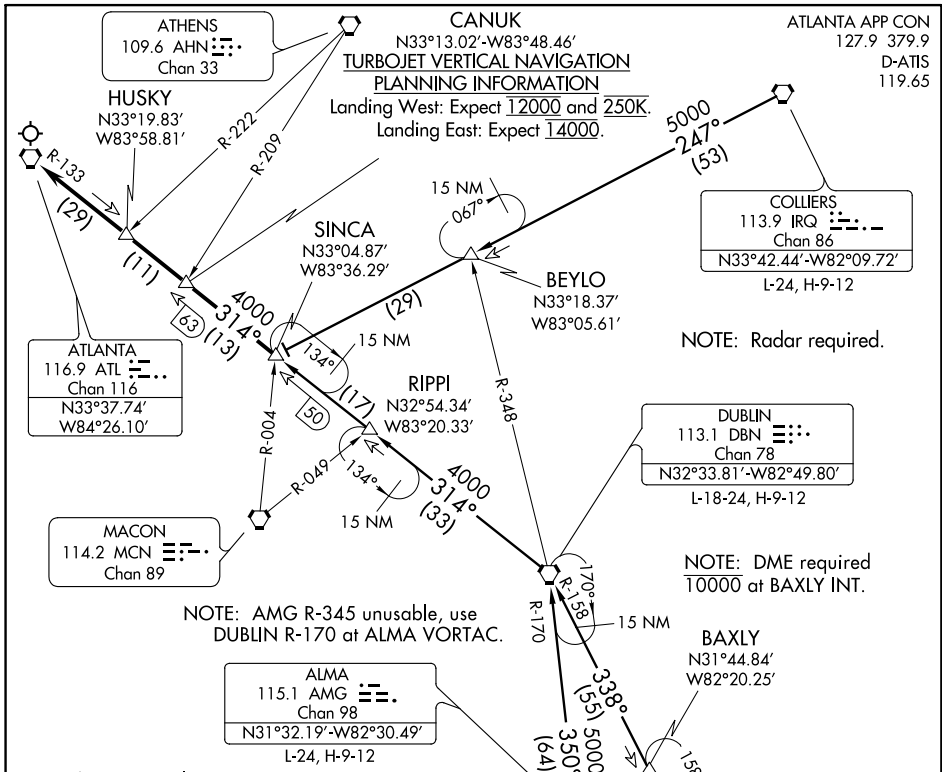


(SINCA.SINCA6) 17173
SINCA SIX ARRIVAL

HARTSFIELD-JACKSON ATLANTA INTL (ATL)
 AL-26 (FAA) ATLANTA, GEORGIA



NOTE: AMG R-345 unusable, use DUBLIN R-170 at ALMA VORTAC.

NOTE: Radar required.

NOTE: DME required 10000 at BAXLY INT.

NOTE: Chart not to scale.

ARRIVAL ROUTE DESCRIPTION

ALMA TRANSITION (AMG.SINCA6): From over AMG VORTAC via AMG R-350 to DBN VORTAC, then via DBN R-314 to SINCA INT. Thence. . .

CECIL TRANSITION (VQQ.SINCA6): From over VQQ VOR via VQQ R-010 to CHESN INT, then via CRG R-336 and DBN R-158 to DBN VORTAC, then via DBN R-314 to SINCA INT. Thence. . .

COLLIERS TRANSITION (IRQ.SINCA6): From over IRQ VORTAC via IRQ R-247 to SINCA INT. Thence. . .

CRAIG TRANSITION (CRG.SINCA6): From over CRG VORTAC via CRG R-336 and DBN R-158 to DBN VORTAC, then via DBN R-314 to SINCA INT. Thence. . .

DUBLIN TRANSITION (DBN.SINCA6): From over DBN VORTAC via DBN R-314 to SINCA INT. Thence. . .

. . . From over SINCA INT via DBN R-314 and ATL R-133 to ATL VORTAC. Expect radar vectors to final approach course after HUSKY INT/ATL 29 DME.

CECIL	117.9 VQQ
N30°12.78' W81°53.45'	
L-21-24, H-8-12	

CRAIG	114.5 CRG
Chan 92	
N30°20.33' W81°30.60'	
L-21-23,24, H-8	

SINCA SIX ARRIVAL
 (SINCA.SINCA6) 15NOV12

ATLANTA, GEORGIA
 HARTSFIELD-JACKSON ATLANTA INTL (ATL)

SE-4, 28 FEB 2019 to 28 MAR 2019

SE-4, 28 FEB 2019 to 28 MAR 2019