

RNAV (GPS) PRM Y RWY 8L (SIMULTANEOUS CLOSE PARALLEL) HARTSFIELD-JACKSON ATLANTA INTL (ATL)

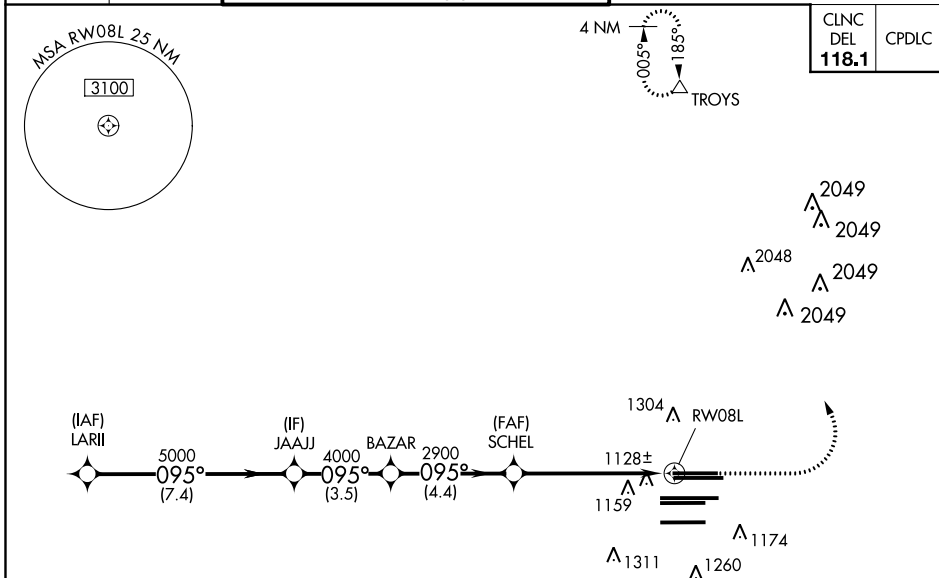
WAAS CH 99300 W08B	APP CRS 095°	Rwy Idg 8800 TDZE 1015 Apt Elev 1026
--	------------------------	--

NA For uncompensated Baro-VNAV systems, LNAV/VNAV NA below -7°C (20°F) or above 54°C (130°F). DME/DME RNP-0.3 NA. For inop ALSF-2, increase LNAV/VNAV all Cats visibility to 1/4 miles. Simultaneous close parallel approach authorized with ILS PRM and RNAV PRM Rwy 9L or 9R or 10, or Rwys 9L and 10, or Rwys 9R and 10. Dual VHF comm required. See additional requirements on AAPP. Use of FD or AP providing RNAV track guidance required during simultaneous operations.

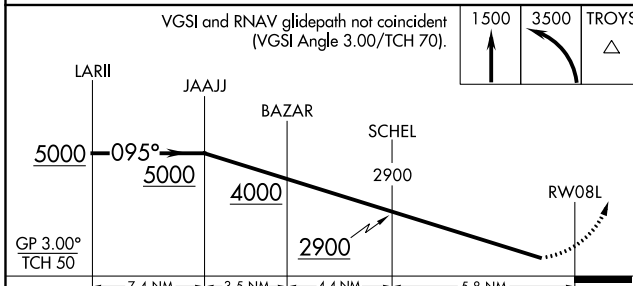
ALSF-2

MISSED APPROACH:
Climb to 1500 then climbing left turn to 3500 direct TROYS and hold.

D-ATIS ARR 119.65 DEP 125.55	ATLANTA APP CON 127.9 379.9	ATLANTA TOWER 8L-26R 8R-26L 9L-27R 9R-27L 10-28 RWYS 119.1 125.325 123.85 119.3 119.5 254.4 PRM 126.9				ALL RWYS 121.9	GND CON (8L-26R,8R-26L) (9L-27R,9R-27L) 10-28 121.75 121.65 254.4	ALL RWYS
--	---------------------------------------	--	--	--	--	--------------------------	--	----------



RADAR REQUIRED



ELEV 1026 TDZE 1015

095° to RW08L

1135±, 1186, 1151, 1041±, 900, 999, 1073±, 1357, 12390, 1059, 9000 X 150, 1030±, 1193, 1093

HIRL all Rwys
TDZ/CL Rwys 8L, 9R, 10, 26R, 27L and 28

CATEGORY	A	B	C	D
LPV DA		1215/18	200 (200-½)	
LNAV/VNAV DA		1404/45	389 (400-¾)	

RNAV (GPS) PRM Y RWY 8L (SIMULTANEOUS CLOSE PARALLEL)

SE-4, 28 FEB 2019 to 28 MAR 2019

SE-4, 28 FEB 2019 to 28 MAR 2019