

ATLANTA, GEORGIA

AL-26 (FAA)

# RNAV (GPS) PRM RWY 9R (SIMULTANEOUS CLOSE PARALLEL) HARTSFIELD-JACKSON ATLANTA INTL (ATL)

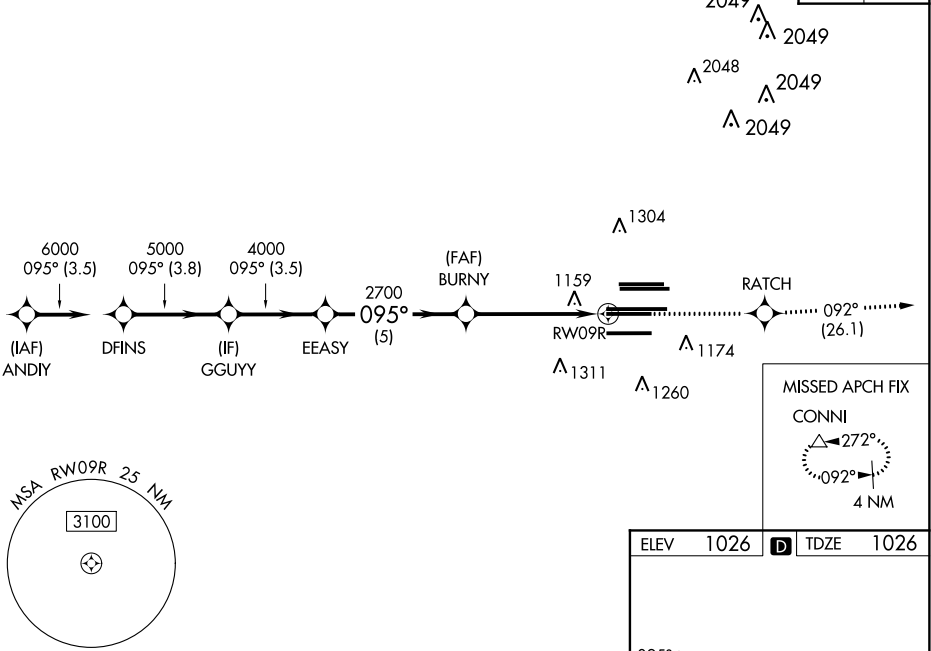
WAAS CH <b>97400</b> <b>W09B</b>	APP CRS <b>095°</b>	Rwy Idg <b>9000</b> TDZE <b>1026</b> Apt Elev <b>1026</b>
--	------------------------	---

**NA** For uncompensated Baro-VNAV systems, LNAV/VNAV NA below -7°C (20°F) or above 54°C (130°F). DME/DME RNP-0.3 NA. Simultaneous close parallel approach authorized with ILS PRM and RNAV PRM Rwy 8L or 8R or 10, or Rwy 8L and 10, or Rwy 8R and 10. Dual VHF comm required. See additional requirements on AAUP. Use of FD or AP providing RNAV track guidance required during simultaneous operations.

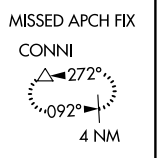
**ALS-F-2**  
**MISSED APPROACH:** Climb to 4000 direct RATCH and on track 092° to CONNI and hold.

D-ATIS ARR <b>119.65</b> DEP <b>125.55</b>	ATLANTA APP CON <b>127.9 379.9</b>	ATLANTA TOWER 8L-26R <b>119.1</b> 8R-26L <b>125.325</b> 9L-27R <b>123.85</b> 9R-27L <b>119.3</b> 10-28 RWYS <b>119.5</b> 254.4 <b>PRM 132.55</b>	ALL RWYS (8L-26R,8R-26L) <b>121.9</b> (9L-27R,9R-27L) 10-28 <b>121.75</b> 254.4	GND CON <b>121.65</b>	ALL RWYS <b>254.4</b>
--	---------------------------------------	--	--	--------------------------	--------------------------

## RADAR REQUIRED

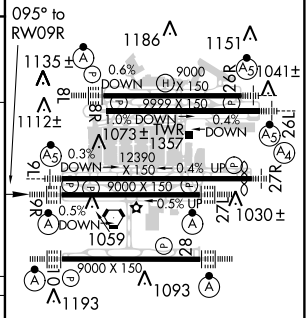


CLNC DEL <b>118.1</b>	CPDLC
-----------------------------	-------



ELEV 1026	<b>D</b> TDZE 1026
-----------	--------------------

VGSI and RNAV glidepath not coincident (VGSI Angle 3.00/TCH 70).				
ANDIY	DFINS	GGUYY	EEASY	BURNY
7000	6000	5000	4000	2700
GP 3.00° TCH 56				
	3.5 NM	3.8 NM	3.5 NM	5 NM
				5.1 NM
CATEGORY	A	B	C	D
LPV DA		1226/18	200 (200-½)	
LNAV/VNAV DA		1403/40	377 (400-¾)	



HIRL all Rwy's  
TDZ/CL Rwy's 8L, 9R, 10, 26R, 27L and 28

SE-4, 28 FEB 2019 to 28 MAR 2019

SE-4, 28 FEB 2019 to 28 MAR 2019

ATLANTA, GEORGIA  
Orig-A 12OCT17

33°38'N-84°26'W

HARTSFIELD-JACKSON ATLANTA INTL (ATL)

# RNAV (GPS) PRM RWY 9R (SIMULTANEOUS CLOSE PARALLEL)