

ATLANTA, GEORGIA


AL-26 (FAA)

RNAV (GPS) PRM RWY 9L (SIMULTANEOUS CLOSE PARALLEL) HARTSFIELD-JACKSON ATLANTA INTL (ATL)

WAAS CH 62800 W09D	APP CRS 095°	Rwy Idg TDZE 1019 Apt Elev 1026
--	------------------------	---

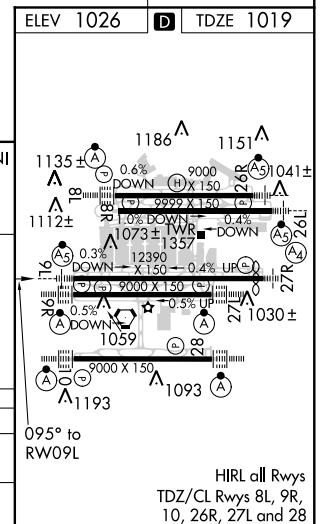
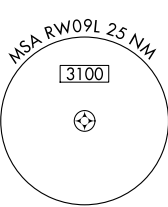
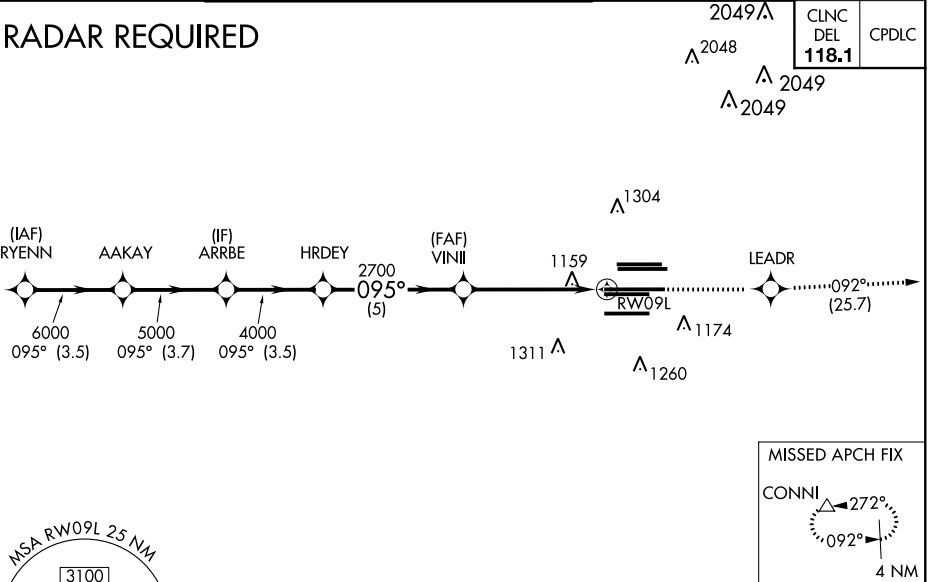
NA For uncompensated Baro-VNAV systems, LNAV/VNAV NA below -7°C (20°F) or above 54°C (130°F). DME/DME RNP-0.3 NA. Simultaneous Close Parallel Approach authorized with ILS PRM and RNAV PRM Rwy 8L or 8R or 10, or Rwy 8L and 10, or Rwy 8R and 10. Dual VHF Comm required. See additional requirements on AAUP. Use of FD or AP providing RNAV track guidance required during simultaneous operations. **RVR 1800 authorized with use of FD or AP or HUD to DA.

MALSR MISSED APPROACH: Climb to 4000 direct LEADR and on track 092° to CONNI and hold.



D-ATIS ARR 119.65	ATLANTA APP CON	ATLANTA TOWER					ALL RWYS	GND CON	ALL RWYS
DEP 125.55	127.9 379.9	8L-26R	8R-26L	9L-27R	9R-27L	10-28	(8L-26R,8R-26L)	(9L-27R,9R-27L)	10-28
		119.1	125.325	123.85	119.3	119.5	254.4	121.9	121.75 121.65 254.4

RADAR REQUIRED



VGSI and RNAV glidepath not coincident (VGSI Angle 3.00/TCH 71).

RYENN	AAKAY	ARRBE	HRDEY	VINII	RW09L
7000	6000	5000	4000	2700	
GP 3.00° TCH 56					
3.5 NM		3.7 NM	3.5 NM	5 NM	5.1 NM
CATEGORY	A		B		C
LPV DA **			1219/24		200 (200-1/2)
LNAV/VNAV DA			1405/40		386 (400-3/4)

SE-4, 28 FEB 2019 to 28 MAR 2019

SE-4, 28 FEB 2019 to 28 MAR 2019

ATLANTA, GEORGIA
Orig-B 120CT17

33°38'N-84°26'W

HARTSFIELD-JACKSON ATLANTA INTL (ATL)

RNAV (GPS) PRM RWY 9L (SIMULTANEOUS CLOSE PARALLEL)