

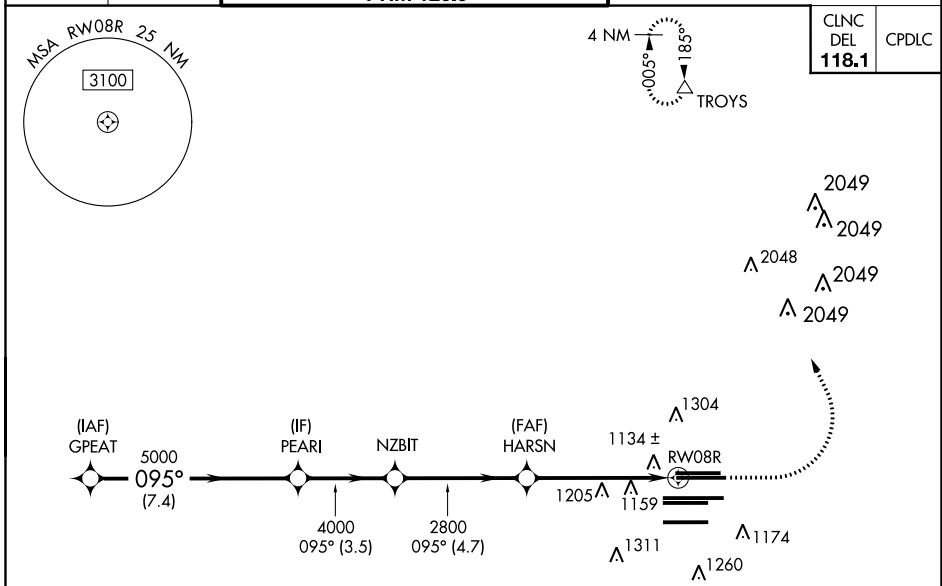
WAAS CH <b>48800</b> <b>W08D</b>	APP CRS <b>095°</b>	Rwy Idg TDZE <b>1024</b> Apt Elev <b>1026</b>	<b>9999</b>
--	------------------------	---	-------------

# RNAV (GPS) RWY 8R

HARTSFIELD-JACKSON ATLANTA INTL (ATL)

RNP APCH.	For uncompensated Baro-VNAV systems, LNAV/VNAV NA below -7°C, or above 54°C. Simultaneous approach authorized with Rwy 9L or 9R or 10. LNAV procedure NA during simultaneous operations. Use of FD or AP providing RNAV track guidance required during simultaneous operations.	MISSED APPROACH: Climb to 1500 then climbing left turn to 3500 direct TROYS and hold.
-----------	---	---

D-ATIS ARR <b>119.65</b> DEP <b>125.55</b>	ATLANTA APP CON <b>127.9 379.9</b>	ATLANTA TOWER 8L-26R 8R-26L 9L-27R 9R-27L 10-28 RWYS <b>119.1 125.325 123.85 119.3 119.5 254.4</b> PRM <b>126.9</b>	ALL RWYS <b>121.9</b>	GND CON (8L-26R, 8R-26L) (9L-27R, 9R-27L) 10-28 <b>121.75 121.65 254.4</b>	ALL RWYS
--	--	--	-----------------------------	--	-------------



SE-4, 28 FEB 2019 to 28 MAR 2019

SE-4, 28 FEB 2019 to 28 MAR 2019

## RADAR REQUIRED

VGSI and RNAV glidepath not coincident (VGSI Angle 3.00/TCH 67).

GPEAT	PEARI	NZBIT	HARSN	RW08R
5000	5000	4000	2800	2800
7.4 NM	3.5 NM	4.7 NM	4.2 NM	1.2 NM
GP 3.00° TCH 53				* 1.2 NM to RW08R
CATEGORY	A	B	C	D
LPV DA		1282/40	258 (300-¾)	
LNAV/VNAV DA		1516-1⅓	492 (500-1⅓)	
LNAV MDA	1480/55	456 (500-1)	1480-1⅓	456 (500-1⅓)

1500 3500 TROYS

095° to RW08R

\* LNAV only

