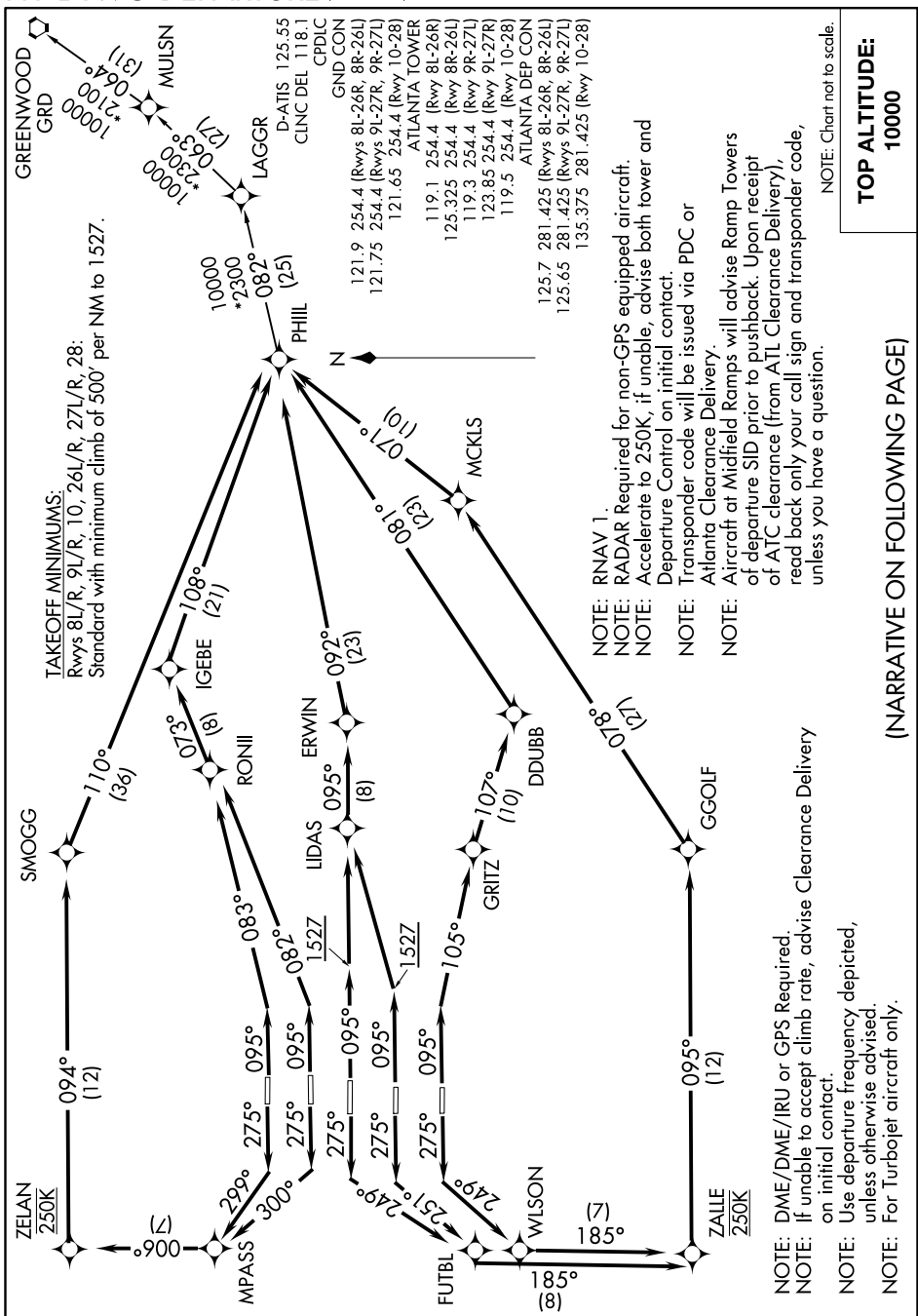


PHIL TWO DEPARTURE (RNAV)



SE-4, 28 FEB 2019 to 28 MAR 2019

SE-4, 28 FEB 2019 to 28 MAR 2019

PHIL TWO DEPARTURE (RNAV)

(NARRATIVE ON FOLLOWING PAGE)

TOP ALTITUDE: 10000

NOTE: Chart not to scale.

- NOTE: DME/DME/IRU or GPS Required.
- NOTE: If unable to accept climb rate, advise Clearance Delivery on initial contact.
- NOTE: Use departure frequency depicted, unless otherwise advised.
- NOTE: For Turbojet aircraft only.