

ILS PRM RWY 9R (SA CAT I) (SIMULTANEOUS CLOSE PARALLEL) HARTSFIELD-JACKSON ATLANTA INTL (ATL)

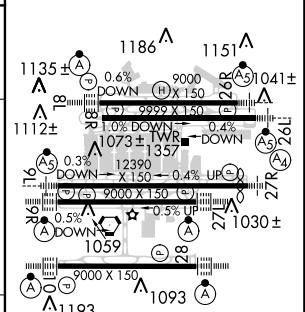
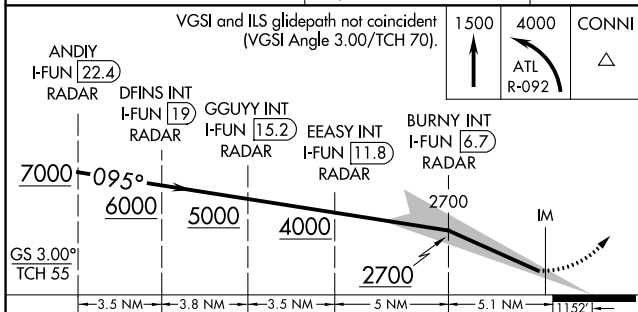
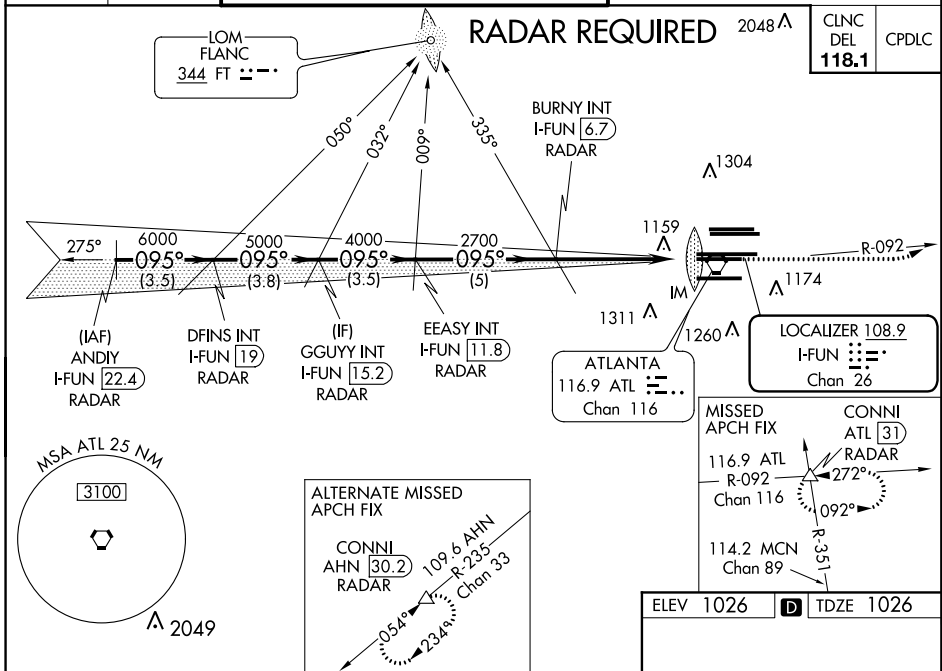
LOC/DME I-FUN 108.9 Chan 26	APP CRS 095°	Rwy Idg 8925 TDZE 1026 Apt Elev 1026
--	------------------------	--

Simultaneous close parallel approach authorized with ILS PRM and RNAV PRM Rwy 8L or 8R or 10 or Rwy 8L and 10 or Rwy 8R and 10. Procedure NA when glideslope not available. Dual VHF comm required. See additional requirements on AAUP. ADF or DME or RADAR required. Requires specific OPSPEC, MSPEC, or LOA approval and use of HUD to DH.

ALSF-2
MISSED APPROACH: Climb to 1500 then climbing left turn to 4000 on ATL VORTAC R-092 to CONNI INT/ATL 31 DME/RADAR and hold.

D-ATIS ARR 119.65 DEP 125.55	ATLANTA APP CON 127.9 379.9	ATLANTA TOWER ALL 8L-26R 8R-26L 9L-27R 9R-27L 10-28 RWYS 119.1 125.325 123.85 119.3 119.5 254.4 PRM 132.55	GND CON ALL (8L-26R,8R-26L) (9L-27R,9R-27L) 10-28 RWYS 121.9 121.75 121.65 254.4
--	---------------------------------------	---	---

CLNC DEL 118.1	CPDLC
--------------------------	-------



CATEGORY	A	B	C	D
5-ILS 9R	RA 196/14 150 DA 1176			

SA CATEGORY I ILS - SPECIAL AIRCREW & AIRCRAFT CERTIFICATION REQUIRED

HILL all Rwys
TDZ/CL Rwys 8L, 9R, 10, 26R, 27L and 28

SE-4, 28 FEB 2019 to 28 MAR 2019

SE-4, 28 FEB 2019 to 28 MAR 2019