

# ILS PRM RWY 28 (SA CAT I) (SIMULTANEOUS CLOSE PARALLEL) HARTSFIELD-JACKSON ATLANTA INTL (ATL)

LOC/DME I-PKU <b>111.75</b> Chan <b>54 (Y)</b>	APP CRS <b>275°</b>	Rwy Idg <b>9000</b>	TDZE <b>998</b>
		Apt Elev <b>1026</b>	

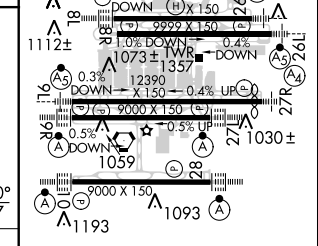
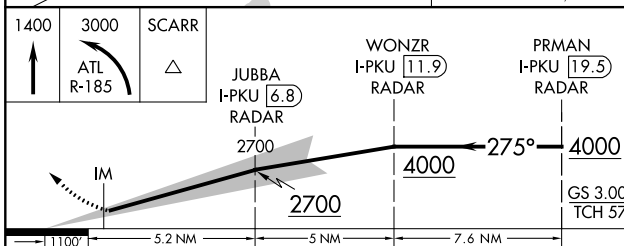
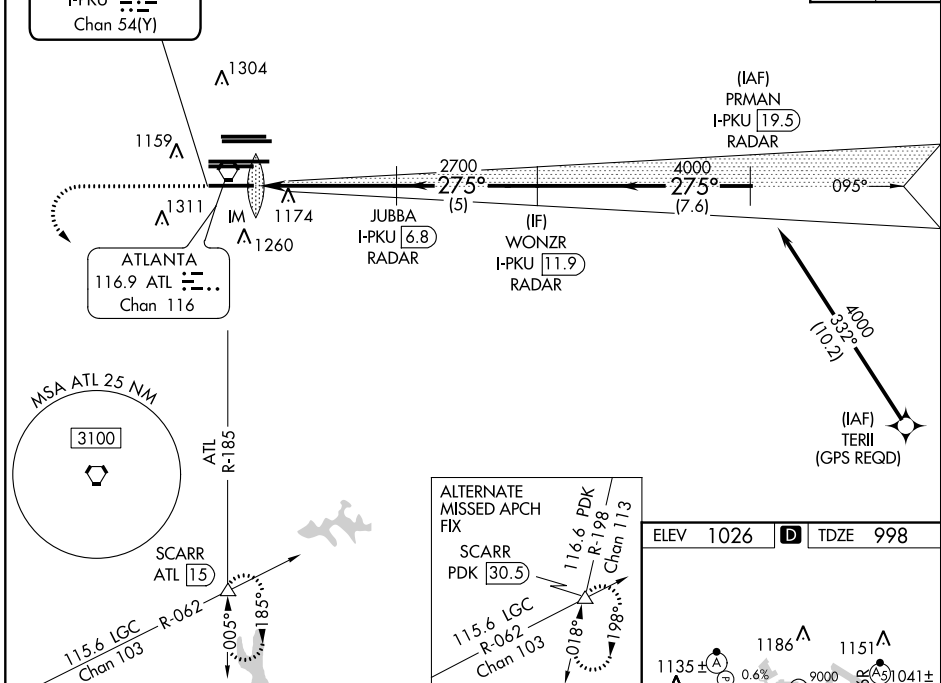
Simultaneous close parallel approach authorized with ILS PRM and RNAV PRM Rwy 26R or 26L or 27R or 27L or Rwy 26R and 27R, or Rwy 26R and 27L, or Rwy 26L and 27R, or Rwy 26L and 27L. Procedure not authorized when glideslope not available. Dual VHF comm required. See additional requirements on AAUP. Requires specific OPSPEC, MSPEC, or LOA approval and use of HUD to DH.

MISSED APPROACH: Climb to 1400 then climbing left turn to 3000 on ATL VORTAC R-185 to SCARR INT/ATL 15 DME and hold.

D-ATIS ARR <b>119.65</b> DEP <b>125.55</b>	ATLANTA APP CON <b>127.9 379.9</b>	ATLANTA TOWER ALL 8L-26R 8R-26L 9L-27R 9R-27L 10-28 RWYS <b>119.1 125.325 123.85 119.3 119.5 254.4</b> PRM <b>133.425</b>	GND CON ALL (8L-26R,8R-26L) (9L-27R,9R-27L) 10-28 RWYS <b>121.9 121.75 121.65 254.4</b>
--	---------------------------------------	--	---

**GPS or RADAR REQUIRED**

CLNC DEL **118.1** CPDLC



1400	3000	SCARR	JUBBA I-PKU <b>[6.8]</b> RADAR	WONZR I-PKU <b>[11.9]</b> RADAR	PRMAN I-PKU <b>[19.5]</b> RADAR
ATL R-185					
IM					GS 3.00° TCH 57
CATEGORY A		CATEGORY B		CATEGORY C	
S-ILS 28		RA 264/14		150 DA 1148	

ATLANTA, GEORGIA 33°38'N-84°26'W HARTSFIELD-JACKSON ATLANTA INTL (ATL)

## SA CATEGORY I ILS - SPECIAL AIRCREW & AIRCRAFT CERTIFICATION REQUIRED

HIRL all Rwy's  
TDZ/CL Rwy's 8L, 9R,  
10, 26R, 27L and 28

# ILS PRM RWY 28 (SA CAT I) (SIMULTANEOUS CLOSE PARALLEL)

SE-4, 28 FEB 2019 to 28 MAR 2019

SE-4, 28 FEB 2019 to 28 MAR 2019