

ILS PRM RWY 28 (CAT II)

(SIMULTANEOUS CLOSE PARALLEL) HARTSFIELD-JACKSON ATLANTA INTL (ATL)

LOC/DME I-PKU 111.75	APP CRS 275°	Rwy Idg TDZE Apt Elev	9000 998 1026
Chan 54 (Y)			

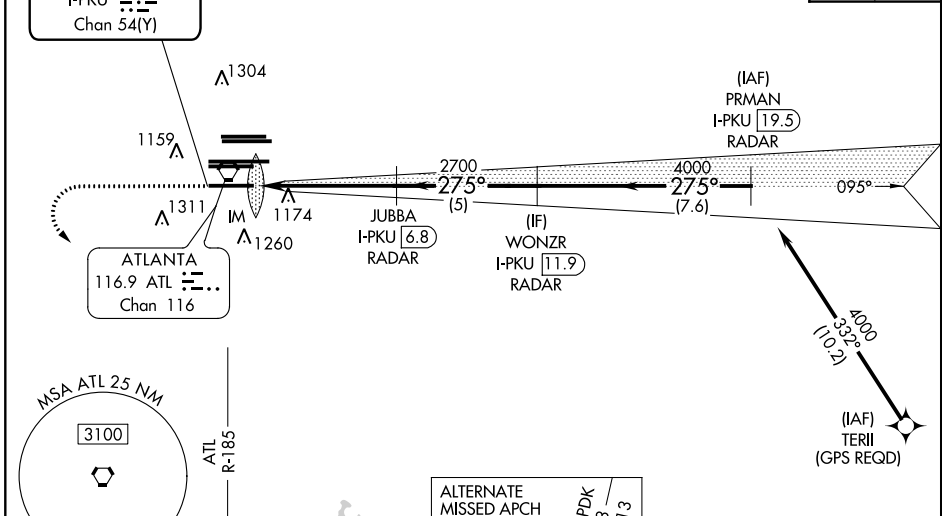
Simultaneous close parallel approach authorized with ILS PRM and RNAV PRM Rwy 26R or 26L or 27R or 27L or Rwy 26R and 27R, or Rwy 26R and 27L, or Rwy 26L and 27R, or Rwy 26L and 27L. Procedure not authorized when glideslope not available. Dual VHF comm required. See additional requirements on AAUP.



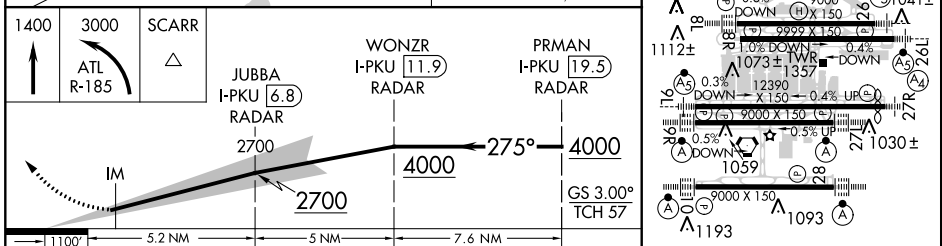
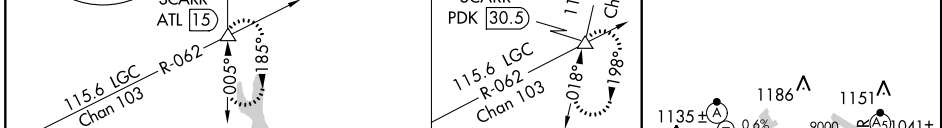
MISSED APPROACH: Climb to 1400 then climbing left turn to 3000 on ATL VORTAC R-185 to SCARR INT/ATL 15 DME and hold.

D-ATIS ARR 119.65 DEP 125.55	ATLANTA APP CON 127.9 379.9	ATLANTA TOWER 8L-26R 8R-26L 9L-27R 9R-27L 10-28 RWYS 119.1 125.325 123.85 119.3 119.5 254.4 PRM 133.425	ALL RWYS 121.9 121.75 121.65 254.4
--	--	--	---

LOCALIZER 111.75 I-PKU Chan 54(Y)	GPS or RADAR REQUIRED	CLNC DEL 118.1	CPDLC
---	------------------------------	--------------------------	-------

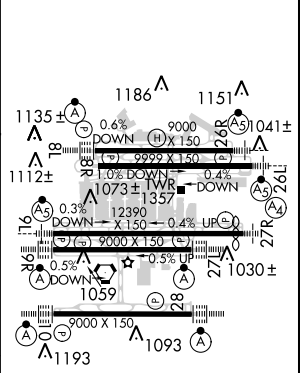


ELEV 1026	D	TDZE 998
------------------	----------	-----------------



CATEGORY	A	B	C	D
S-ILS 28	RA 188/12		100 DA 1098	

CATEGORY II ILS - SPECIAL AIRCREW & AIRCRAFT CERTIFICATION REQUIRED



HIRL all Rwy
TDZ/CL Rwy 8L, 9R,
10, 26R, 27L and 28

SE-4, 28 FEB 2019 to 28 MAR 2019

SE-4, 28 FEB 2019 to 28 MAR 2019