

ATLANTA, GEORGIA

AL-26 (FAA)

ILS PRM RWY 28

(SIMULTANEOUS CLOSE PARALLEL)

HARTSFIELD-JACKSON ATLANTA INTL (ATL)

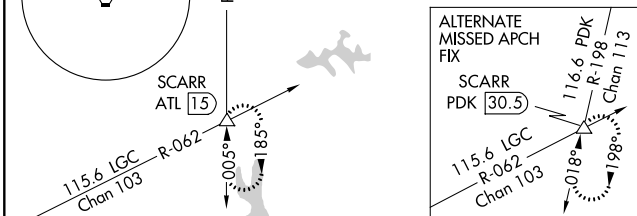
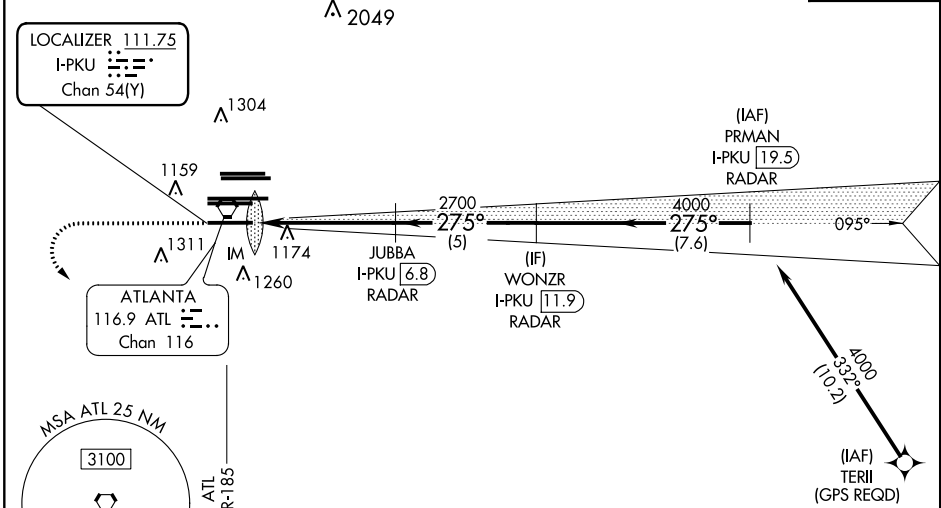
LOC/DME I-PKU 111.75	APP CRS 275°	Rwy Ldg 9000
Chan 54 (Y)		TDZE 998
		Apt Elev 1026

Simultaneous close parallel approach authorized with ILS PRM and RNAV PRM Rwy 26R or 26L or 27R or 27L or Rwy 26R and 27R, or Rwy 26R and 27L, or Rwy 26L and 27R, or Rwy 26L and 27L. Procedure not authorized when glideslope not available. Dual VHF comm required. See additional requirements on AAUP.

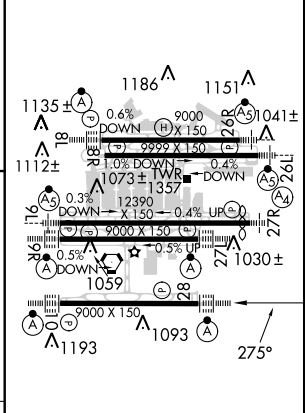
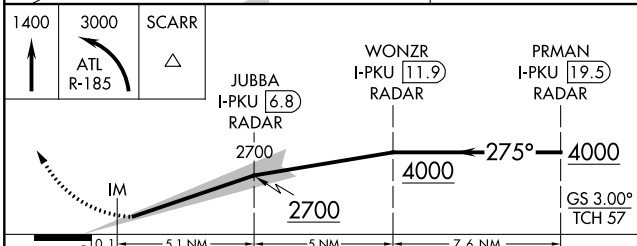
ALSf-2
MISSED APPROACH: Climb to 1400 then climbing left turn to 3000 on ATL VORTAC R-185 to SCARR INT/ATL 15 DME and hold.

D-ATIS ARR 119.65	ATLANTA APP CON APP 127.9 379.9	ATLANTA TOWER 8L-26R 8R-26L 9L-27R 9R-27L 10-28 RWYS 119.1 125.325 123.85 119.3 119.5 254.4	ALL RWYS 254.4
DEP 125.55		PRM 133.425	GND CON 8L-26R,8R-26L (9L-27R,9R-27L) 10-28 RWYS 121.9 121.75 121.65 254.4

GPS or RADAR REQUIRED
 A₂₀₄₈ A₂₀₄₉ A₂₀₄₉
 CLNC DEL **118.1** CPDLC



ELEV 1026	TDZE 998
------------------	-----------------



CATEGORY	A	B	C	D
S-ILS 28		1198/18	200 (200-1/2)	

HIRL all Rwy's
 TDZ/CL Rwy's 8L, 9R,
 10, 26R, 27L and 28

SE-4, 28 FEB 2019 to 28 MAR 2019

SE-4, 28 FEB 2019 to 28 MAR 2019

ATLANTA, GEORGIA
 Amdt 4 18SEP14

33°38'N-84°26'W
ILS PRM RWY 28 (SIMULTANEOUS CLOSE PARALLEL)
 HARTSFIELD-JACKSON ATLANTA INTL (ATL)