

ILS PRM RWY 27L (SIMULTANEOUS CLOSE PARALLEL)

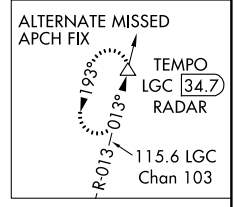
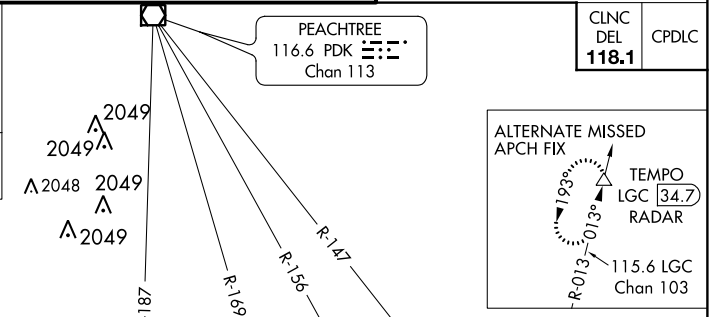
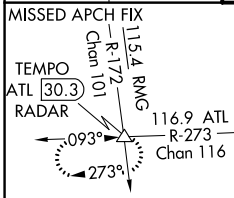
HARTSFIELD-JACKSON ATLANTA INTL (ATL)

LOC/DME I-FSQ 108.5 Chan 22	APP CRS 275°	Rwy Idg TDZE Apt Elev	8865 999 1026
---	------------------------	-----------------------------	--

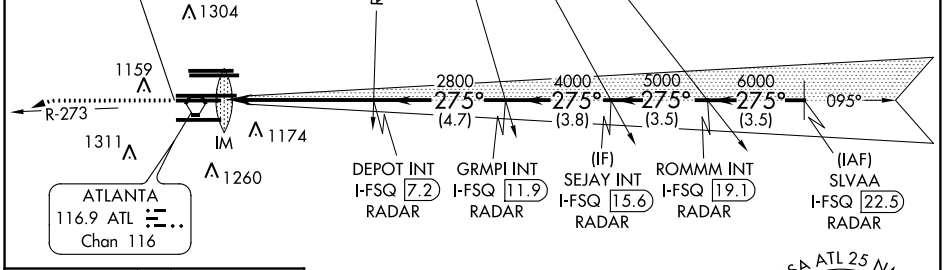
▼ Simultaneous close parallel approach authorized with ILS PRM and RNAV PRM Rwy 26R or 26L or 28, or Rwy 26R and 28, or Rwy 26L and 28. Procedure not authorized when glideslope not available. Dual VHF comm required. See additional requirements on AAUP.

ALSF-2
MISSED APPROACH: Climb to 1400 then climbing left turn to 4000 on ATL VORTAC R-273 to TEMPO INT/ATL 30.3 DME/RADAR and hold.

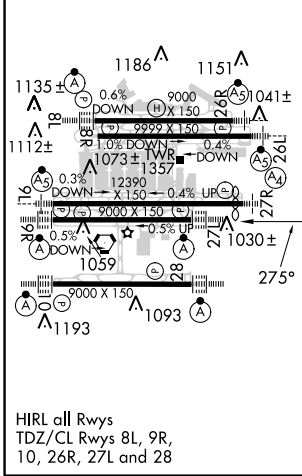
D-ATIS ARR 119.65 DEP 125.55	ATLANTA APP CON 127.9 379.9	ATLANTA TOWER 8L-26R 8R-26L 9L-27R 9R-27L 10-28 RWYS 119.1 125.325 123.85 119.3 119.5 254.4 PRM 132.55	ALL RWYS (8L-26R,8R-26L) (9L-27R,9R-27L) 10-28 121.9 121.75 121.65 254.4	GND CON 121.9 121.75 121.65 254.4
--	---------------------------------------	---	---	---



LOCALIZER 108.5
I-FSQ
Chan 22



ELEV 1026	D	TDZE 999
------------------	----------	-----------------



RADAR REQUIRED

1400	4000	TEMPO	VGSI and ILS glidepath not coincident (VGSI Angle 3.00/TCH 79).	SLVAA I-FSQ [22.5] RADAR
ATL R-273				SEJAY INT I-FSQ [15.6] RADAR
				ROMMM INT I-FSQ [19.1] RADAR
				DEPOT INT I-FSQ [7.2] RADAR
				GRMPI INT I-FSQ [11.9] RADAR

CATEGORY	A	B	C	D
S-ILS 27L	1199/18		200 (200-1/2)	

ATLANTA, GEORGIA
Amdt 3A 15OCT15

33°38'N-84°26'W HARTSFIELD-JACKSON ATLANTA INTL (ATL) ILS PRM RWY 27L (SIMULTANEOUS CLOSE PARALLEL)

SE-4, 28 FEB 2019 to 28 MAR 2019

SE-4, 28 FEB 2019 to 28 MAR 2019