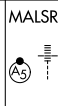


**ILS PRM RWY 26R (SA CAT I & II)**  
**(SIMULTANEOUS CLOSE PARALLEL)**  
 HARTSFIELD-JACKSON ATLANTA INTL (ATL)

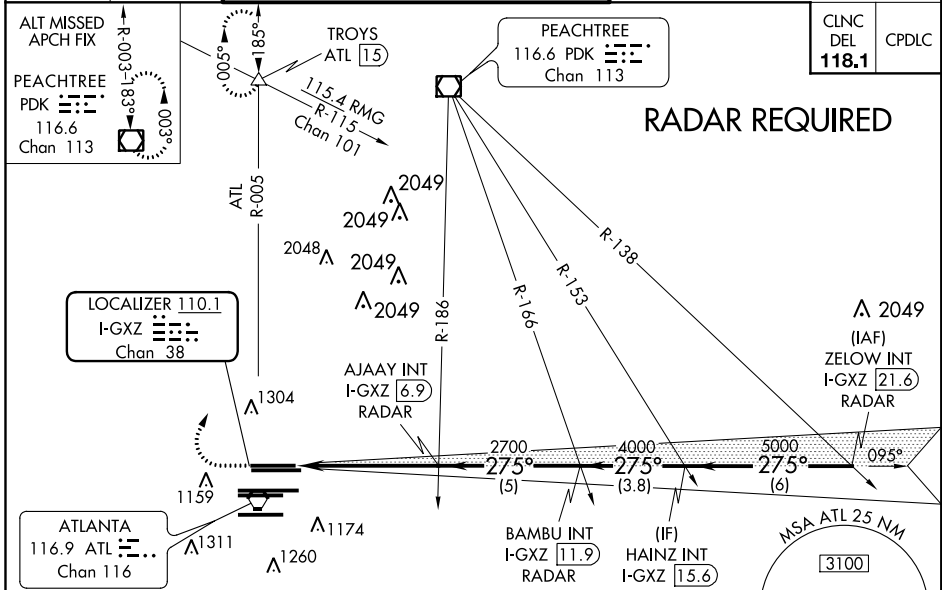
|   |                        |                             |  |
|---|------------------------|-----------------------------|--|
| LOC/DME I-GXZ<br><b>110.1</b><br>Chan <b>38</b> | APP CRS<br><b>275°</b> | Rwy ldg<br>TDZE<br>Apt Elev | <b>8800</b><br><b>990</b><br><b>1026</b> |
|---|------------------------|-----------------------------|--|

Simultaneous close parallel approach authorized with ILS PRM and RNAV PRM Rwy 27R or 27L or 28, or Rwys 27R and 28, or Rwys 27L and 28. Procedure not authorized when glideslope not available. Dual VHF comm required. See additional requirements on AAUP. SA CAT I: Requires specific OPSPEC, MSPEC, or LOA approval and use of HUD to DH. SA CAT II: Reduced lighting: Requires specific OPSPEC, MSPEC, or LOA approval and use of autoland or HUD to touchdown.

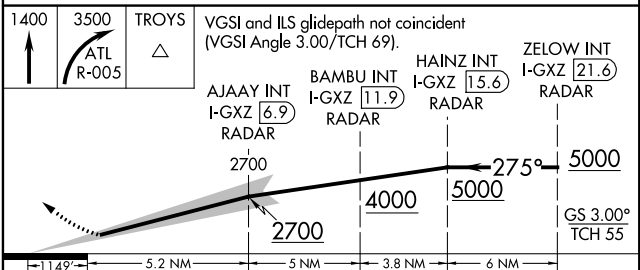
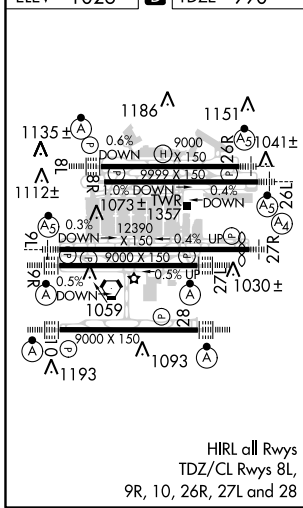


MISSED APPROACH: Climb to 1400 then climbing right turn to 3500 on ATL VORTAC R-005 to TROYS INT/ATL 15 DME and hold.

|  |  |   |  |
|--|--|---|--|
| D-ATIS<br>ARR <b>119.65</b><br>DEP <b>125.55</b> | ATLANTA<br>APP CON<br><b>127.9 379.9</b> | ATLANTA TOWER<br>ALL<br>8L-26R 8R-26L 9L-27R 9R-27L 10-28 RWYS<br><b>119.1 125.325 123.85 119.3 119.5 254.4</b><br>PRM <b>126.9</b> | GND CON<br>ALL<br>(8L-26R,8R-26L) (9L-27R,9R-27L) 10-28 RWYS<br><b>121.9 121.75 121.65 254.4</b> |
|--|--|---|--|



|                  |          |                 |
|------------------|----------|-----------------|
| ELEV <b>1026</b> | <b>D</b> | TDZE <b>990</b> |
|------------------|----------|-----------------|



| CATEGORY  | A         | B         | C           | D |
|-----------|-----------|-----------|-------------|---|
| S-ILS 26R | SA CAT I  | RA 170/14 | 150 DA 1140 |   |
| S-ILS 26R | SA CAT II | RA 110/12 | 100 DA 1090 |   |

**SA CATEGORY I & II ILS - SPECIAL AIRCREW & AIRCRAFT CERTIFICATION REQUIRED**

SE-4, 28 FEB 2019 to 28 MAR 2019

SE-4, 28 FEB 2019 to 28 MAR 2019