

LOC/DME I-FUN <b>108.9</b> Chan 26	APP CRS <b>095°</b>	Rwy Idg TDZE Apt Elev	9R <b>8925 11730</b> <b>1026 1019</b> <b>1026 1026</b>	9L <b>11730</b> <b>1019</b> <b>1026</b>
--	------------------------	-----------------------------	---	--

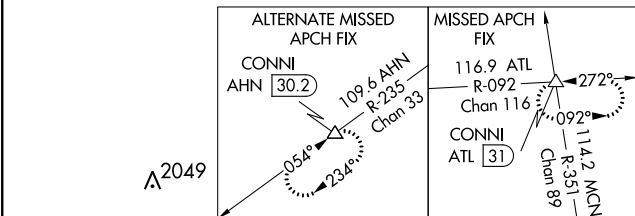
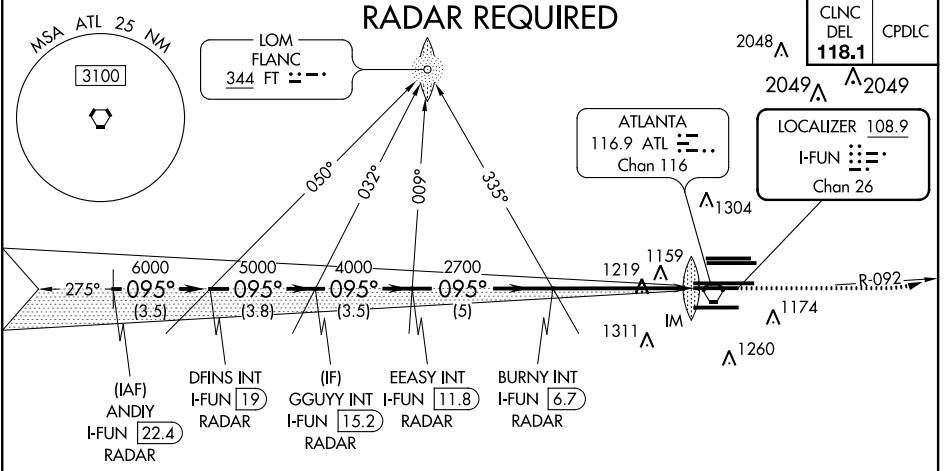
# ILS or LOC RWY 9R

HARTSFIELD-JACKSON ATLANTA INTL (ATL)

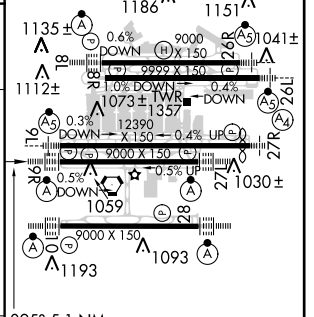
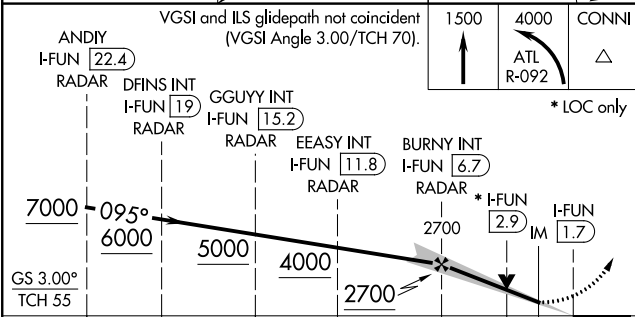
**▽** Inop table does not apply to sidestep 9L for Cats A and B. ADF or DME or RADAR required. Simultaneous approach authorized with Rwy 8L or 8R.

Rwy 9R ALS-F-2 	Rwy 9L MALSR 	MISSED APPROACH: Climb to 1500 then climbing left turn to 4000 on ATL VORTAC R-092 to CONNI INT/ATL 31 DME and hold, or as directed by ATC.
-----------------------	---------------------	---

D-ATIS ARR <b>119.65</b>	ATLANTA APP CON <b>127.9 379.9</b>	ATLANTA TOWER 8L-26R 8R-26L 9L-27R 9R-27L 10-28 RWYS					ALL RWYS	GND CON 8L-26R,8R-26L (9L-27R,9R-27L) 10-28 RWYS	ALL RWYS
DEP <b>125.55</b>	<b>127.9 379.9</b>	<b>119.1 125.325</b>	<b>123.85</b>	<b>119.3</b>	<b>119.5 254.4</b>	<b>121.9</b>	<b>121.75</b>	<b>121.65</b>	<b>254.4</b>



ELEV 1026	TDZE 9R 1026	TDZE 9L 1019
-----------	--------------	--------------



CATEGORY	A	B	C	D	
S-ILS 9R	1226/18		200 (200-½)		
S-LOC 9R	1480/24	454 (500-½)	1480/45	454 (500-¾)	
SIDESTEP 9L	1480/55	461 (500-1)		1480-1½ 461 (500-½)	

FAF to MAP 5.1 NM	Knots 60 90 120 150 180
	Min:Sec 5:06 3:24 2:33 2:02 1:42

SE-4, 28 FEB 2019 to 28 MAR 2019

SE-4, 28 FEB 2019 to 28 MAR 2019