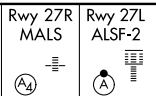


LOC I-AFA 111.3	APP CRS 275°	Rwy Idg TDZE Apt Elev	27R 11690	27L 8865 985 999 1026 1026
---------------------------	------------------------	-----------------------------	---------------------	---

ILS or LOC RWY 27R

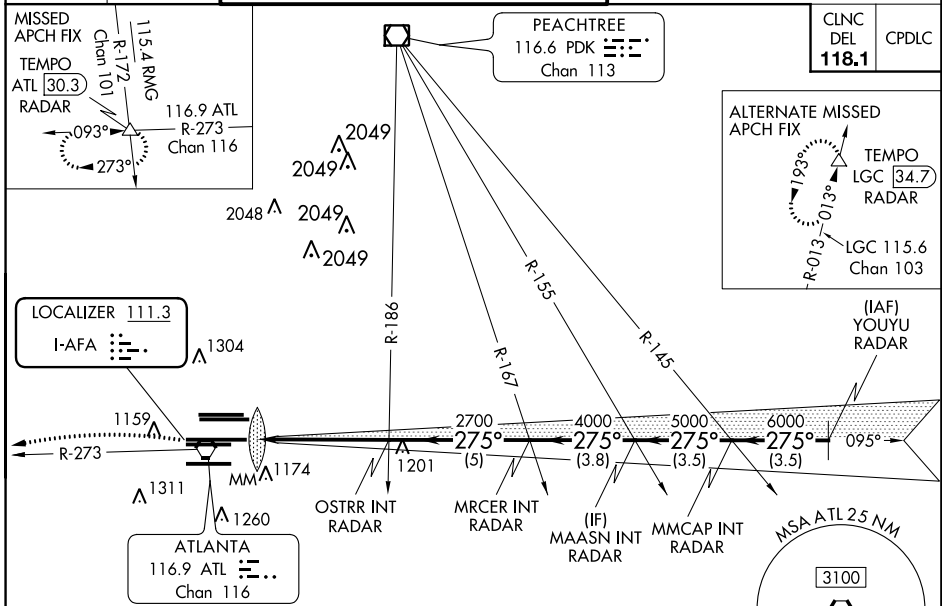
HARTSFIELD-JACKSON ATLANTA INTL (ATL)

Simultaneous approach authorized with Rwy 26R or 26L or 28, or Rwy 26R and 28.
Inop table does not apply to sidestep 27L.
For inop MALS, increase S-LOC 27R Cat C and D to 1 3/4.

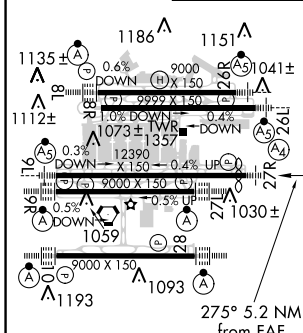


MISSED APPROACH: Climb to 1400 then climbing left turn to 4000 on ATL VORTAC R-273 to TEMPO INT/ATL 30.3 DME/RADAR and hold.

D-ATIS ARR 119.65	ATLANTA APP CON 127.9 379.9	ATLANTA TOWER 8L-26R 8R-26L 9L-27R 9R-27L 10-28 RWYS				ALL RWYS 119.3 119.5 254.4	GND CON (8L-26R, 8R-26L) (9L-27R, 9R-27L) 10-28 RWYS 121.9 121.75 121.65 254.4
DEP 125.55							



ELEV 1026	D	TDZE 27R 985	TDZE 27L 999
-----------	---	--------------	--------------

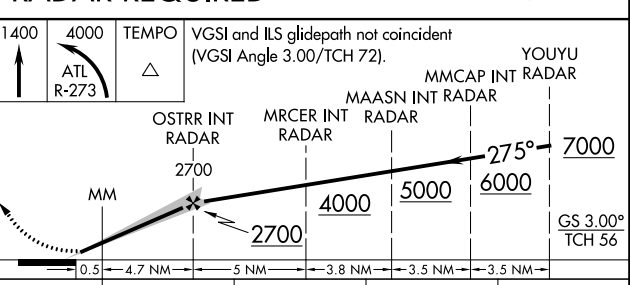


HIRL all Rwy
TDZ/CL Rwy 8L, 9R,
10, 26R, 27L and 28

FAF to MAP 5.2 NM

Knots	60	90	120	150	180
Min:Sec	5:12	3:28	2:36	2:05	1:44

RADAR REQUIRED



CATEGORY	A	B	C	D
S-ILS 27R	1185/40		200 (200-3/4)	
S-LOC 27R	1420/40	435 (400-3/4)	1420/55	435 (400-1)
SIDESTEP 27L	1420/55	421 (400-1)	1420-1 1/2	421 (400-1 1/2)

SE-4, 28 FEB 2019 to 28 MAR 2019

SE-4, 28 FEB 2019 to 28 MAR 2019