

LOC/DME I-OMO 111.55 Chan 52 (Y)	APP CRS 095°	Rwy Ldg 9000 TDZE 1000 Apt Elev 1026
--	------------------------	--

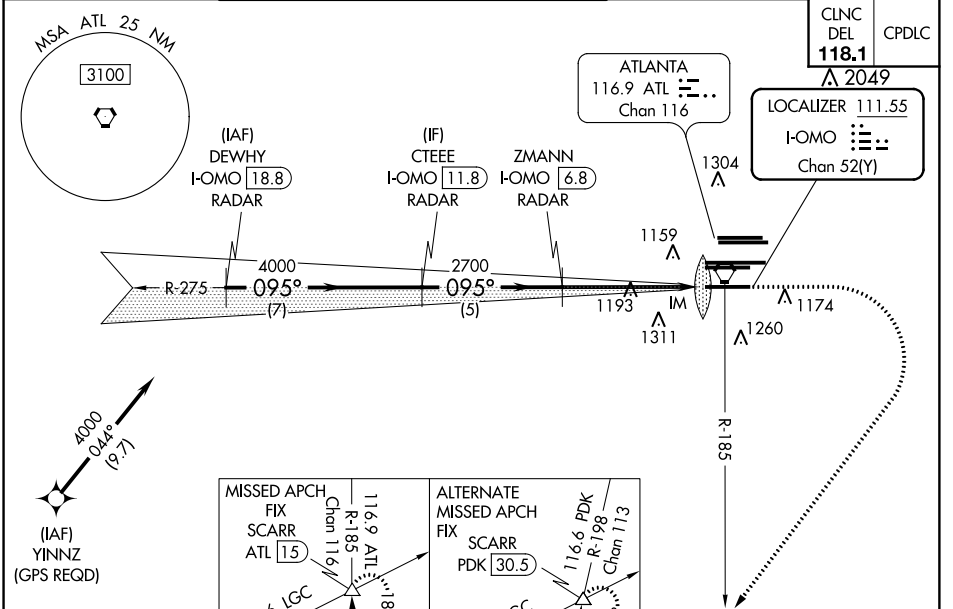
I LS or LOC RWY 10

HARTSFIELD-JACKSON ATLANTA INTL (ATL)

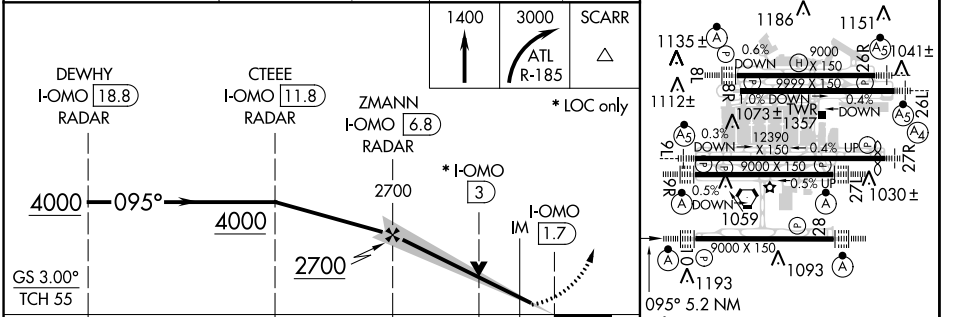
▼ For inop ALSF-2, increase S-LOC Cats C/D visibility to 1%.
 Simultaneous approach authorized with Rwy 9L or 8R or 8L, or Rwys 9L and 8L.
 DME or Radar required.
 Localizer not suitable for electronic rollout guidance.

ALSF-2 MISSED APPROACH: Climb to 1400 then climbing right turn to 3000 on ATL VORTAC R-185 to SCARR INT/ATL 15 DME and hold.

D-ATIS ARR 119.65	ATLANTA APP CON 127.9 379.9	ATLANTA TOWER 8L-26R 8R-26L 9L-27R 9R-27L 10-28 RWYS 119.1 125.325 123.85 119.3 119.5 254.4	ALL RWYS 121.9	GND CON 8L-26R,8R-26L (9L-27R,9R-27L) 10-28 RWYS 121.75	ALL RWYS 121.65 254.4
-----------------------------	--	--	-----------------------------	--	------------------------------------



ELEV	1026	TDZE	1000
------	------	------	------



CATEGORY	A	B	C	D
S-ILS 10	1200/18		200 (200-½)	
S-LOC 10	1500/24	500 (500-½)	1500/50	500 (500-1)

HIRL all Rwys
TDZ/CL Rwys 8L, 9R, 10, 26R, 27L and 28

FAF to MAP 5.2 NM

Knots	60	90	120	150	180
Min:Sec	5:12	3:28	2:36	2:05	1:44

SE-4, 28 FEB 2019 to 28 MAR 2019

SE-4, 28 FEB 2019 to 28 MAR 2019