

LOC/DME I-FUN 108.9 Chan 26	APP CRS 095°	Rwy Idg 9R 8925 9L 11730 TDZE 1026 1019 Apt Elev 1026 1026
---	------------------------	---

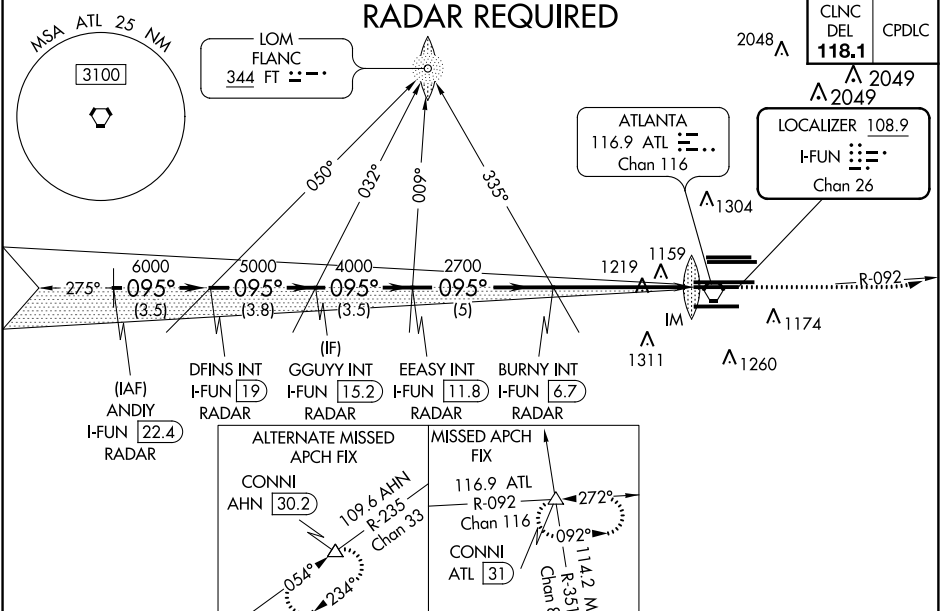
ILS RWY 9R (CAT II & III)

HARTSFIELD-JACKSON ATLANTA INTL (ATL)

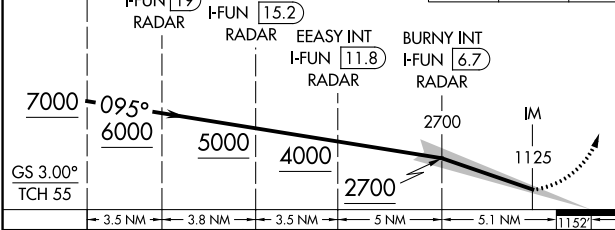
▼ Inop table does not apply to Sidestep 9L for Cats A and B. ADF or DME or RADAR required.
Simultaneous approach authorized with Rwy 8L or 8R.

MISSED APPROACH: Climb to 1500 then climbing left turn to 4000 on ATL VORTAC R-092 to CONNI INT/ATL 31 DME and hold.

D-ATIS ARR 119.65	ATLANTA APP CON 127.9 379.9	ATLANTA TOWER 8L-26R 8R-26L 9L-27R 9R-27L 10-28 RWYS 119.1 125.325 123.85 119.3 119.5 254.4	ALL 254.4	GND CON (8L-26R,8R-26L) (9L-27R,9R-27L) 10-28 RWYS 121.9 121.75 121.65 254.4	ALL RWYS
-----------------------------	--	--	---------------------	---	-------------

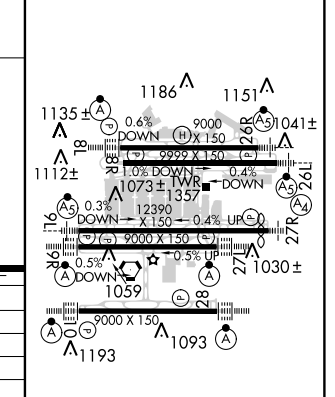


ANDY I-FUN 22.4 RADAR	VGSI and ILS glidepath not coincident (VGSI Angle 3.00/TCH 70).	1500	4000	CONNI
DFINS INT I-FUN 19 RADAR		↑	ATL R-092	△
GGUY INT I-FUN 15.2 RADAR				
EASY INT I-FUN 11.8 RADAR				
BURN INT I-FUN 6.7 RADAR				



CATEGORY	A	B	C	D
S-ILS 9R	CAT II RA 118/12		100 DA 1126	
S-ILS 9R	CAT IIIa		RVR 07	
S-ILS 9R	CAT IIIb		RVR 03	
S-ILS 9R	CAT IIIc		NA	

ELEV 1026	TDZE 9R 1026	TDZE 9L 1019
-----------	--------------	--------------



CATEGORY II & III ILS - SPECIAL AIRCREW & AIRCRAFT CERTIFICATION REQUIRED

HIRL all Rwys
TDZ/CL Rwys 8L, 9R, 10, 26R, 27L and 28

SE-4, 28 FEB 2019 to 28 MAR 2019

SE-4, 28 FEB 2019 to 28 MAR 2019