

LOC/DME I-FSQ <b>108.5</b> Chan <b>22</b>	APP CRS <b>275°</b>	Rwy Idg <b>8865</b>	TDZE <b>999</b>
		Apt Elev <b>1026</b>	

# ILS RWY 27L (CAT II)

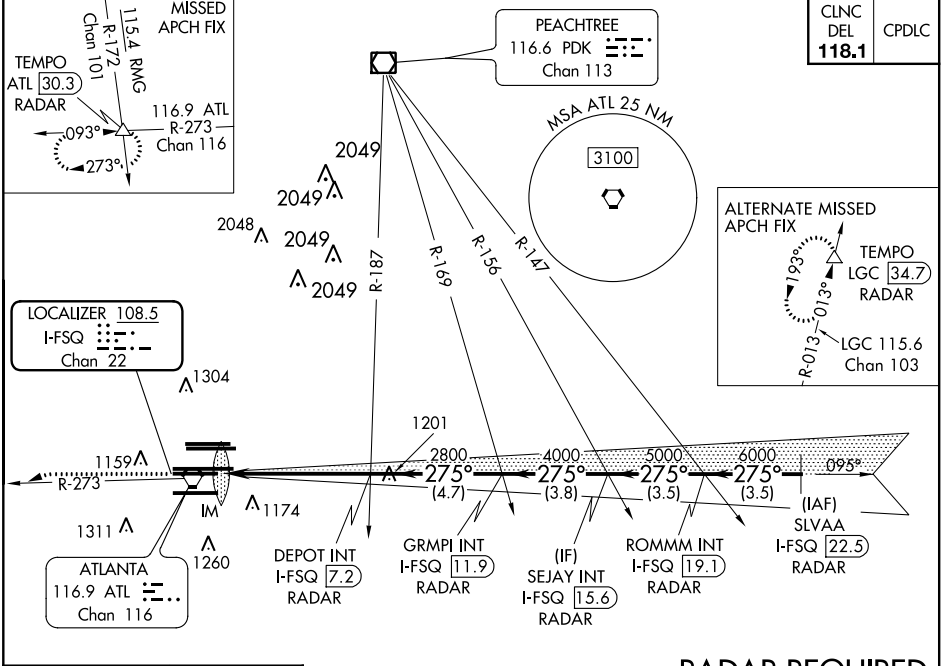
## HARTSFIELD-JACKSON ATLANTA INTL (ATL)

Simultaneous approach authorized with Rwy 26L or 26R.

ALSF-2

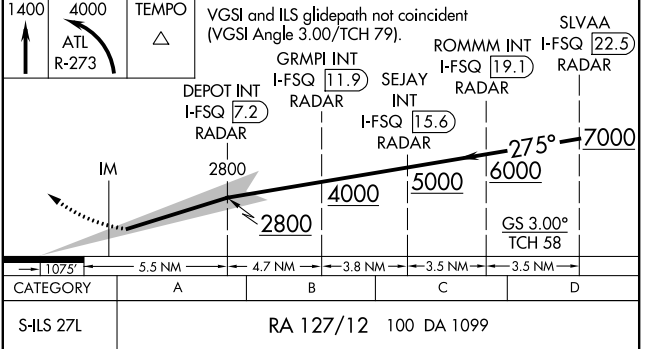
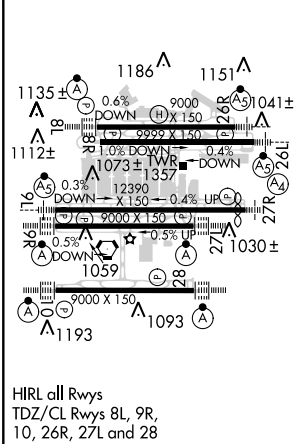
MISSED APPROACH: Climb to 1400 then climbing left turn to 4000 on ATL VORTAC R-273 to TEMPO INT/ATL 30.3 DME/RADAR and hold.

D-ATIS ARR <b>119.65</b>	ATLANTA APP CON <b>127.9 379.9</b>	ATLANTA TOWER 8L-26R 8R-26L 9L-27R 9R-27L 10-28 RWYS <b>119.1 125.325 123.85 119.3 119.5 254.4</b>	ALL <b>121.9</b>	GND CON (8L-26R,8R-26L) (9L-27R,9R-27L) 10-28 RWYS <b>121.75 121.65 254.4</b>
-----------------------------	--	--	---------------------	---



ELEV 1026	<b>D</b>	TDZE 999
-----------	----------	----------

### RADAR REQUIRED



CATEGORY II ILS- SPECIAL AIRCREW & AIRCRAFT CERTIFICATION REQUIRED

CATEGORY RA 127/12 100 DA 1099

SE-4, 28 FEB 2019 to 28 MAR 2019

SE-4, 28 FEB 2019 to 28 MAR 2019