


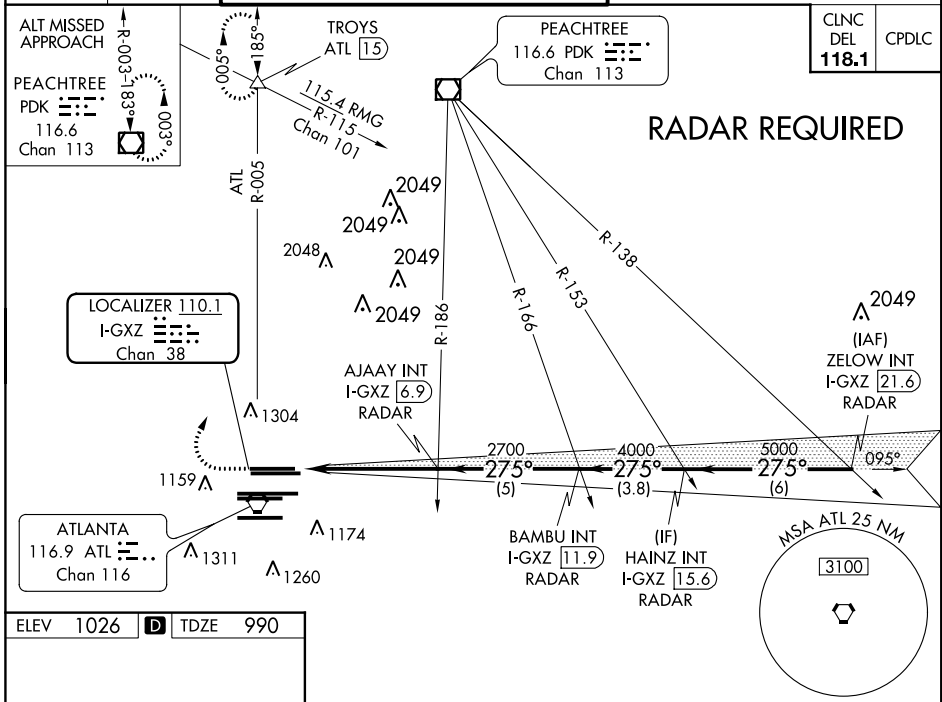
LOC/DME I-GXZ 110.1 Chan 38	APP CRS 275°	Rwy ldg TDZE Apt Elev	8800 990 1026
---	------------------------	-----------------------------	--

ILS RWY 26R (SA CAT I & II)
HARTSFIELD-JACKSON ATLANTA INTL (ATL)

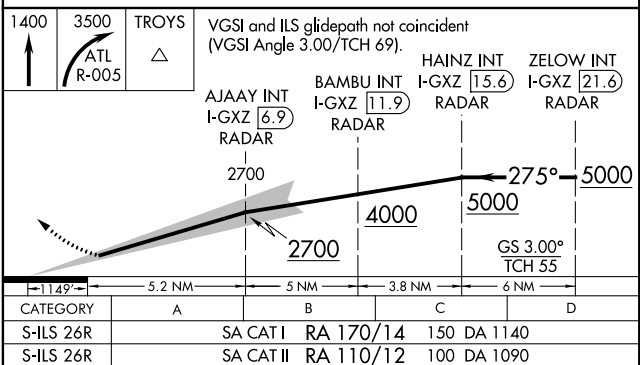
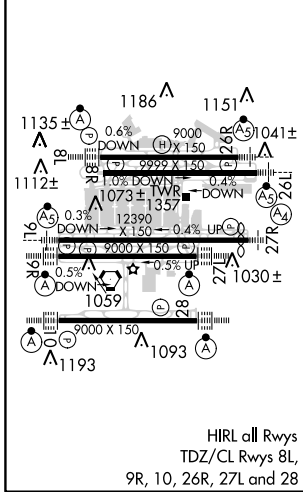
▼ SA CAT I: Requires specific OPSPEC, MSPEC, or LOA approval and use of HUD to DH.
SA CAT II: Reduced lighting: Requires specific OPSPEC, MSPEC, or LOA approval and use of autoland or HUD to touchdown.
Simultaneous approach authorized with Rwy 27R or 27L or 28, or Rwy 27R and 28.

MALSR  MISSED APPROACH: Climb to 1400 then climbing right turn to 3500 on ATL VORTAC R-005 to TROYS INT/ATL 15 DME and hold.

D-ATIS ARR 119.65 DEP 125.55	ATLANTA APP CON 127.9 379.9	ATLANTA TOWER 8L-26R 8R-26L 9L-27R 9R-27L 10-28 RWYS 119.1 125.325 123.85 119.3 119.5 254.4				ALL RWYS 121.9	GND CON (9L-27R, 9R-27L) 10-28 RWYS 121.75 121.65 254.4
--	--	--	--	--	--	-----------------------------	--



ELEV 1026	D	TDZE 990
-----------	----------	----------



CATEGORY	A	B	C	D
S-ILS 26R	SA CAT I	RA 170/14	150 DA 1140	
S-ILS 26R	SA CAT II	RA 110/12	100 DA 1090	

SA CATEGORY I & II ILS - SPECIAL AIRCREW & AIRCRAFT CERTIFICATION REQUIRED

SE-4, 28 FEB 2019 to 28 MAR 2019

SE-4, 28 FEB 2019 to 28 MAR 2019