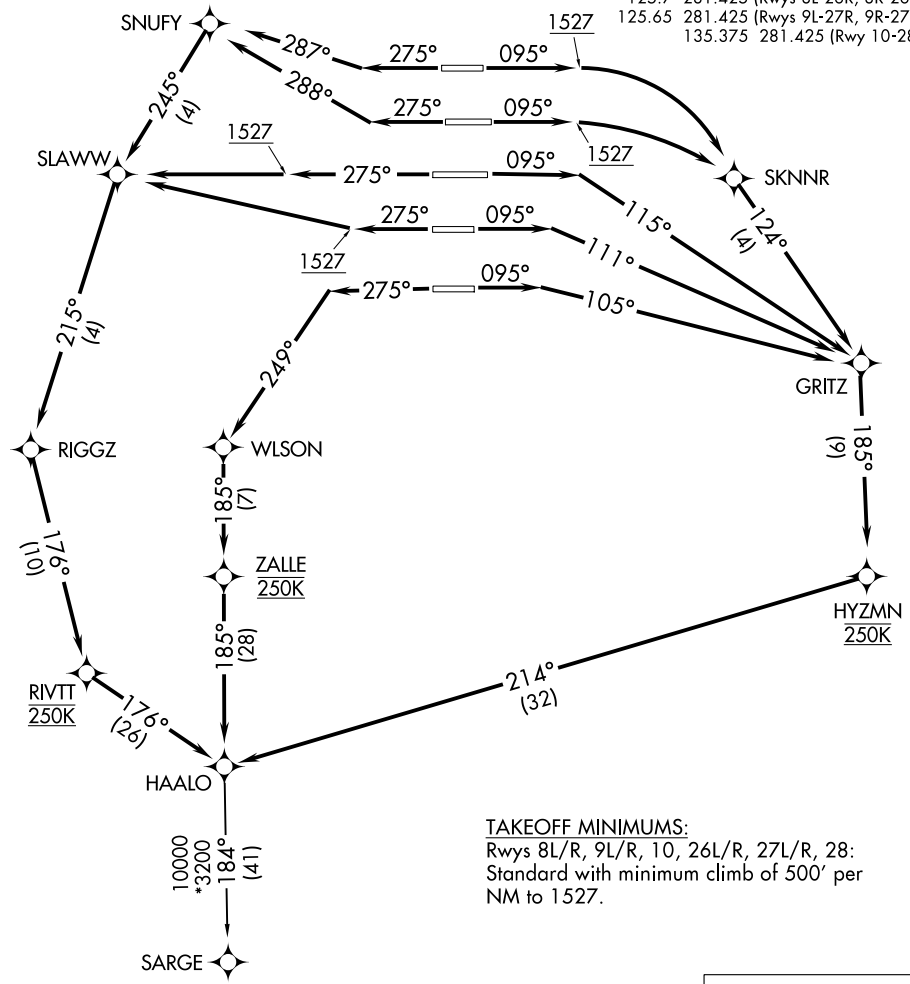


NOTE: If unable to accept climb rate, advise Clearance Delivery on initial contact.  
 NOTE: Use departure frequency depicted unless otherwise advised.  
 NOTE: For Turbojet aircraft only.  
 NOTE: DME/DME/IRU or GPS Required.  
 NOTE: RNAV 1.  
 NOTE: RADAR Required for non-GPS equipped aircraft.  
 NOTE: Transponder code will be issued via PDC or Atlanta Clearance Delivery.  
 NOTE: Accelerate to 250K, if unable, advise both tower and Departure Control on initial contact.  
 NOTE: Aircraft at Midfield Ramps will advise Ramp Towers of departure SID prior to pushback. Upon receipt of ATC clearance (from ATL Clearance Delivery), read back only your call sign and transponder code, unless you have a question.

D-ATIS 125.55  
 CLNC DEL 118.1  
 CPDLC  
 GND CON  
 121.9 254.4 (Rwys 8L-26R, 8R-26L)  
 121.75 254.4 (Rwys 9L-27R, 9R-27L)  
 121.65 254.4 (Rwy 10-28)  
 ATLANTA TOWER  
 119.1 254.4 (Rwy 8L-26R)  
 125.325 254.4 (Rwy 8R-26L)  
 119.3 254.4 (Rwy 9R-27L)  
 123.85 254.4 (Rwy 9L-27R)  
 119.5 254.4 (Rwy 10-28)  
 ATLANTA DEP CON  
 125.7 281.425 (Rwys 8L-26R, 8R-26L)  
 125.65 281.425 (Rwys 9L-27R, 9R-27L)  
 135.375 281.425 (Rwy 10-28)



**TAKEOFF MINIMUMS:**  
 Rwys 8L/R, 9L/R, 10, 26L/R, 27L/R, 28:  
 Standard with minimum climb of 500' per  
 NM to 1527.

**TOP ALTITUDE:  
 10000**

(NARRATIVE ON FOLLOWING PAGE)

NOTE: Chart not to scale.

SE-4, 28 FEB 2019 to 28 MAR 2019

SE-4, 28 FEB 2019 to 28 MAR 2019