

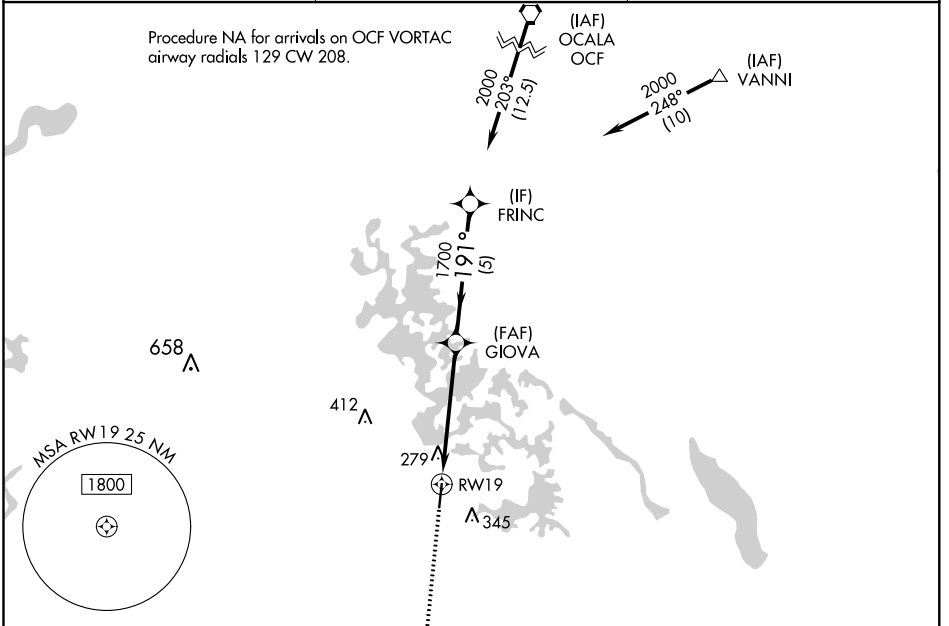
APP CRS 191°	Rwy Idg TDZE Apt Elev	5001 54 65
------------------------	-----------------------------	---------------------------------------

RNAV (GPS) RWY 19

INVERNESS (INF)

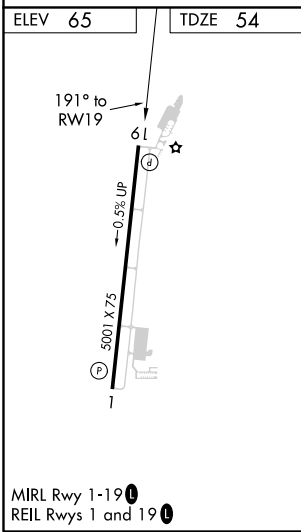
RNP APCH.	MISSED APPROACH: Climb to 2000 direct BOWSK and on track 176° to REBEC and hold.
Rwy 19 helicopter visibility reduction below 1 SM NA.	

AWOS-3 119.975	JACKSONVILLE APP CON 118.6 251.15	UNICOM 122.725 (CTAF)
--------------------------	---	---------------------------------



SE-3, 31 JAN 2019 to 28 FEB 2019

SE-3, 31 JAN 2019 to 28 FEB 2019



2000	BOWSK	REBEC	Visual Segment - Obstacles.	FRINC
		tr 176°		
RWY 19		GIOVA	1700	2000
5.1 NM		5 NM		
CATEGORY	A	B	C	D
LNAV MDA	580-1	526 (600-1)	580-1½ 526 (600-1½)	NA
CIRCLING	660-1	595 (600-1)	660-1½ 595 (600-1½)	NA