

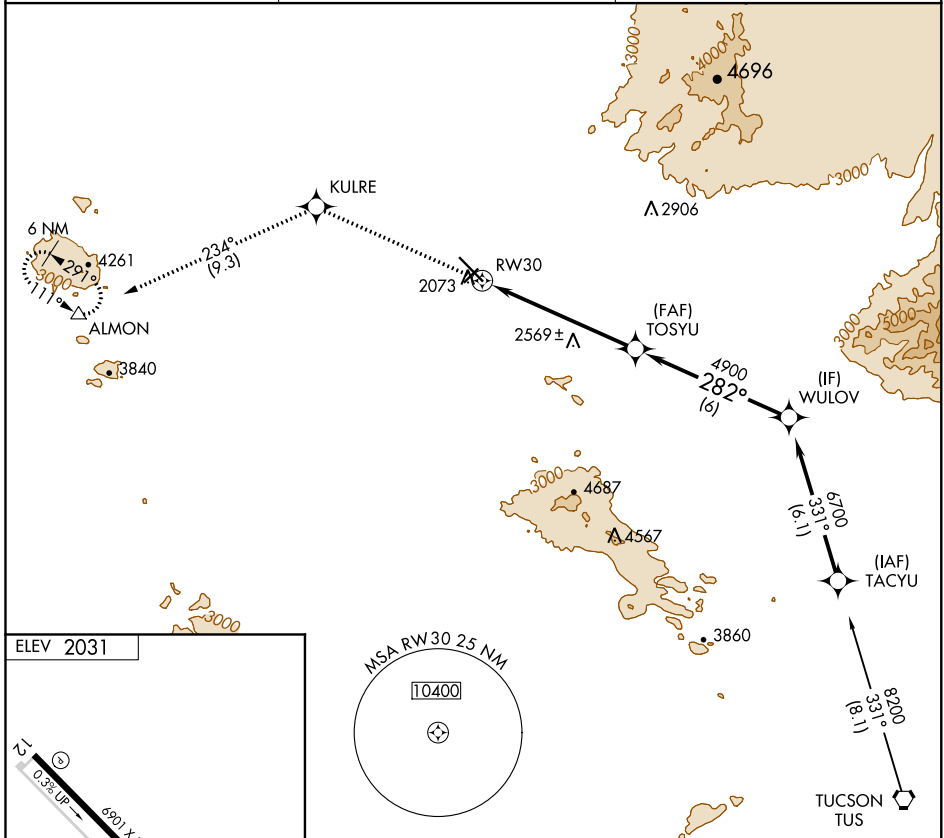
APP CRS	Rwy Idg	N/A
282°	TDZE	N/A
	Apt Elev	2031

RNAV (GPS)-E

MARANA RGNL (AVQ)

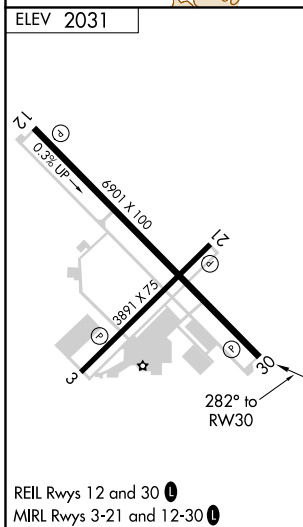
▽ If local altimeter setting not received, use Ryan Field altimeter setting and increase all MDAs 100 feet.
△NA MISSED APPROACH: Climb to 6000 direct KULRE and 234° track to ALMON and hold, continue climb-in-hold to 6000.

AWOS-3 118.375	TUCSON APP CON 119.4 318.1	UNICOM 123.0 (CTAF) 0
--------------------------	--------------------------------------	---------------------------------



SW-4, 31 JAN 2019 to 28 FEB 2019

SW-4, 31 JAN 2019 to 28 FEB 2019



6000	KULRE	234° tr	ALMON		
				TOSYU	WULOV
				4900	6700
				6 NM	6 NM
CATEGORY	A	B	C	D	
CIRCLING	2820-1 789 (800-1)	2820-1¼ 789 (800-1¼)	2820-2¼ 789 (800-2¼)	NA	Procedure Turn NA