

APP CRS	Rwy Idg	<b>4252</b>
<b>325°</b>	TDZE	<b>3560</b>
	Apt Elev	<b>3560</b>

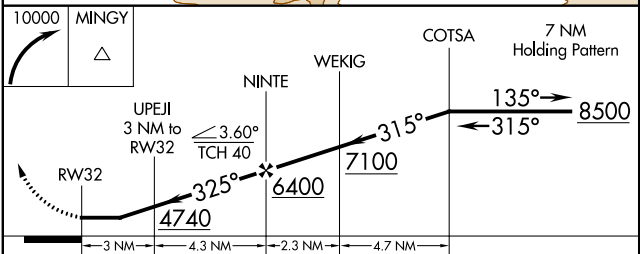
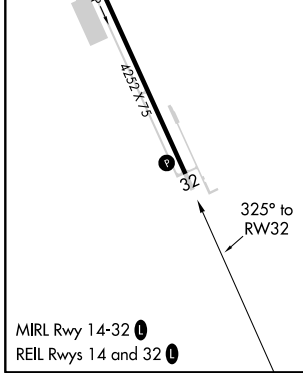
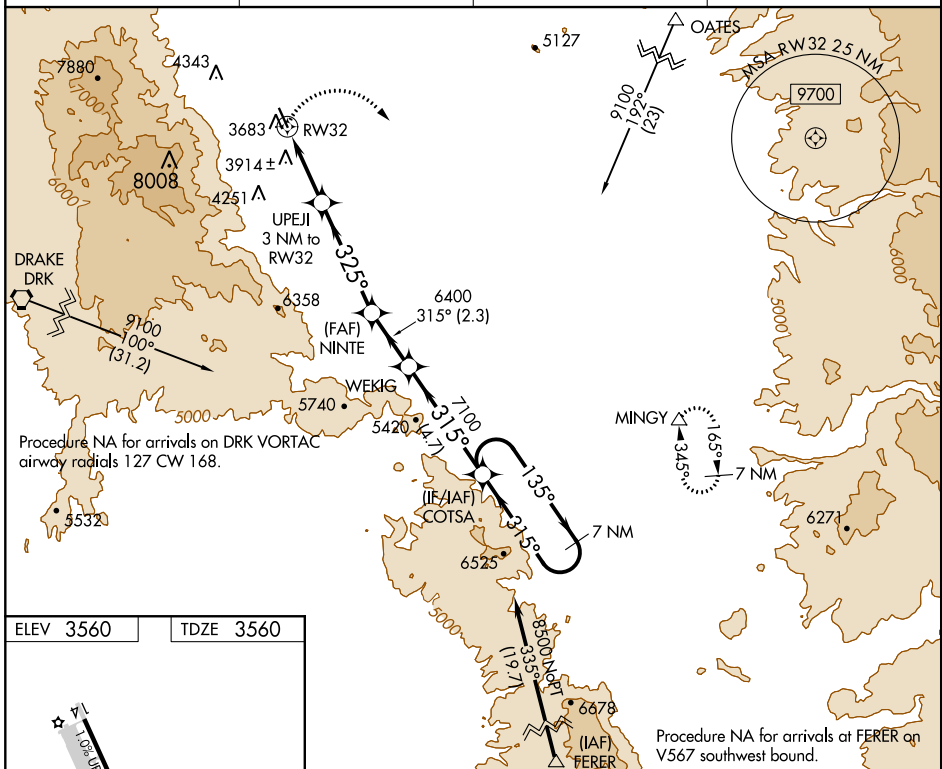
# RNAV (GPS) RWY 32

COTTONWOOD (P52)

**⚠** Circling NA southwest of Rwy 14-32. DME/DME RNP-0.3 NA. Procedure NA at night. Helicopter visibility reduction below 1 SM NA. When local altimeter setting not received, use Sedona altimeter setting and increase all MDA 200 feet, increase LNAV and Circling Cat A/B visibility ¼ mile, LNAV Cat C visibility ½ mile, Circling Cat C visibility ¾ mile.

**MISSED APPROACH:** Climbing right turn to 10000 direct MINGY and hold, continue climb-in-hold to 10000.

AWOS-3 <b>119.925</b>	PHOENIX APP CON <b>126.375 236.775</b>	PRESCOTT RADIO <b>122.3</b>	UNICOM <b>122.8 (CTAF)</b>
--------------------------	-------------------------------------------	--------------------------------	-------------------------------



CATEGORY	A	B	C	D
LNAV MDA	4260-1	700 (700-1)	4260-2 700 (700-2)	NA
<b>C</b> CIRCLING	4260-1	700 (700-1)	4260-2 700 (700-2)	NA

SW-4, 31 JAN 2019 to 28 FEB 2019

SW-4, 31 JAN 2019 to 28 FEB 2019