

WAAS CH 81805 W33A	APP CRS 329°	Rwy Idg TDZE Apt Elev	5000 195 211
--	------------------------	-----------------------------	---

RNAV (GPS) RWY 33

STAFFORD RGNL (RMN)

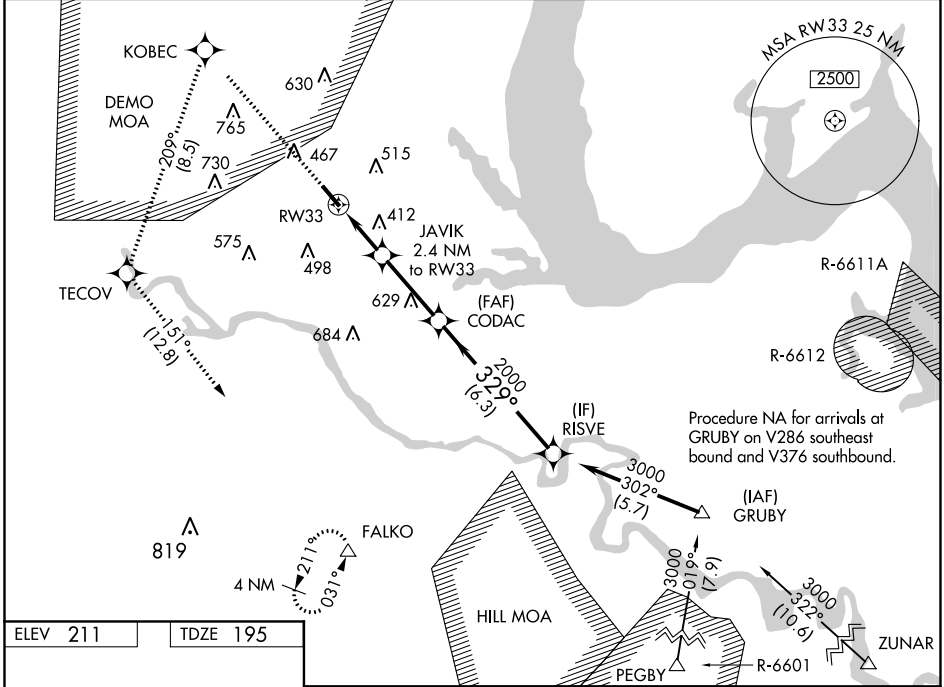
RNP APCH.

⚠ Inop table does not apply to LPV all Cats. For uncompensated Baro-VNAV systems, LNAV/VNAV NA below -15°C or above 54°C. For inop ALS, increase LNAV Cat C/D visibility to 1 3/8 SM.

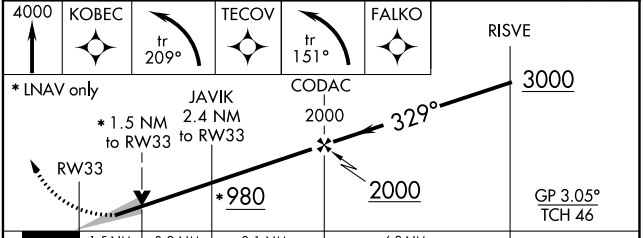
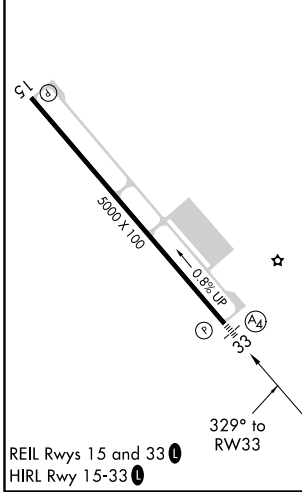


MISSED APPROACH: Climb to 4000 direct KOBEC and left turn on track 209° to TECOV and left turn on track 151° to FALCO and hold.

AWOS-3 126.325	POTOMAC APP CON 128.525 306.925	GCO 135.075	UNICOM 122.725 (CTAF) 0
--------------------------	---	-----------------------	-----------------------------------



ELEV 211	TDZE 195
----------	----------



CATEGORY	A	B	C	D
LPV DA		450-3/4 255 (300-3/4)		450-1 255 (300-1)
LNAV/ VNAV DA		546-3/4 351 (400-3/4)		546-1 351 (400-1)
LNAV MDA	700-3/4 505 (500-3/4)		700-1 1/2 505 (500-1 1/2)	
CIRCLING	720-1 509 (600-1)	740-1 529 (600-1)	840-1 3/4 629 (700-1 3/4)	880-2 669 (700-2)

NE-3, 31 JAN 2019 to 28 FEB 2019

NE-3, 31 JAN 2019 to 28 FEB 2019