

GPS RWY 12R

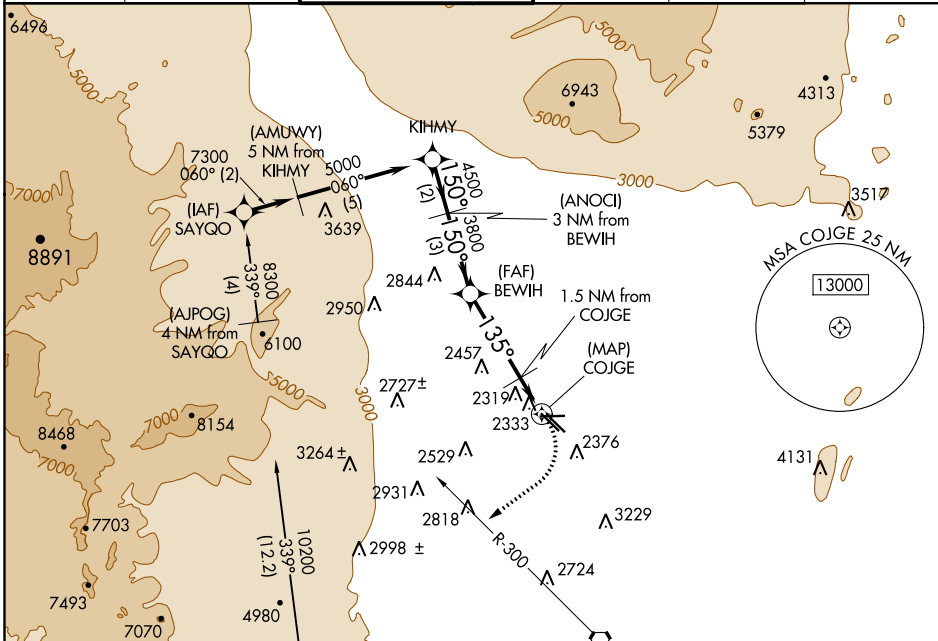
NORTH LAS VEGAS (VGT)

APP CRS	Rwy Idg	5001
135°	TDZE	2205
	Apt Elev	2205

NA When local altimeter setting not received, use McCarran Intl altimeter setting and increase all MDA 40 feet and S-12R Cat D visibility ¼ mile. Circling to Rwy 12L-30R NA.

MISSED APPROACH: Climbing right turn to 4000 via heading 220° and LAS R-300 to LAS VORTAC.

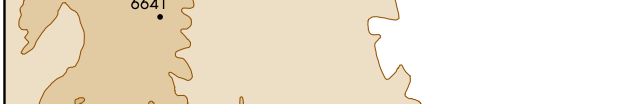
ATIS 118.05	LAS VEGAS APP CON 119.4 360.85	NORTH LAS VEGAS TOWER * 125.7 (CTAF) 360.75	GND CON 121.7	CLNC DEL 124.0	UNICOM 122.95
-----------------------	--	---	-------------------------	--------------------------	-------------------------



SW-4, 31 JAN 2019 to 28 FEB 2019

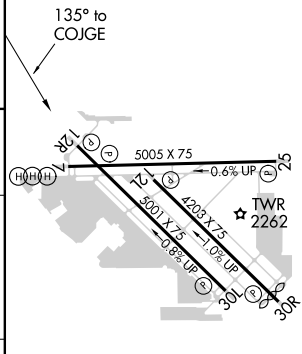
SW-4, 31 JAN 2019 to 28 FEB 2019

ELEV 2205	TDZE 2205
-----------	-----------



Procedure Turn NA	KIHMY VGSi and descent angles not coincident (VGSi Angle 3.00/TCH 25).		4000	LAS R-300	LAS
	5000	3800	2720		
	2 NM	3 NM	3.5 NM	1.5 NM	

ELEV 2205	TDZE 2205
-----------	-----------



CATEGORY	A	B	C	D
S-12R	2620-1 415 (500-1)		2620-1¼ 415 (500-1¼)	
CIRCLING	2680-1 475 (500-1)		2680-1½ 475 (500-1½)	2760-2 555 (600-2)

REIL all Rwy's
MIRL Rwy's 7-25 and 12L-30R
MIRL Rwy's 12R-30L