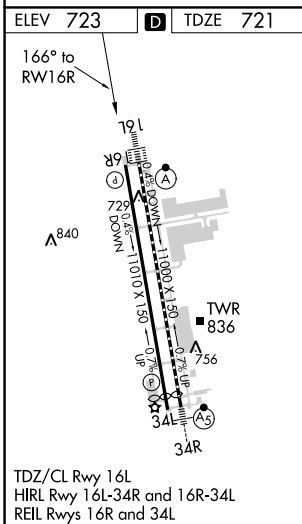
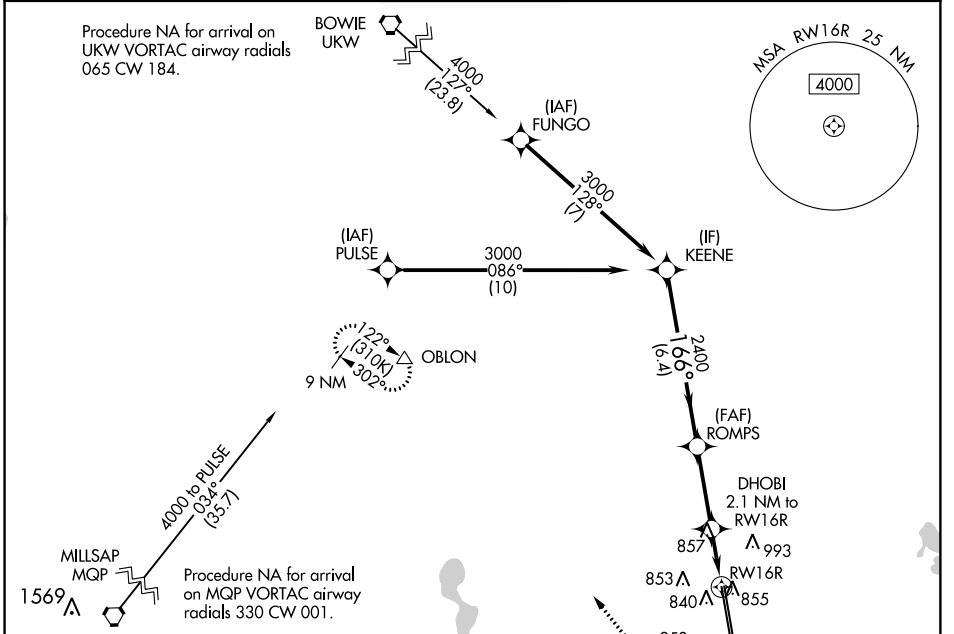


WAAS CH <b>99338</b> <b>W16A</b>	APP CRS <b>166°</b>	Rwy Idg TDZE <b>721</b> Apt Elev <b>723</b>	<b>10399</b>
--	------------------------	---	--------------

# RNAV (GPS) RWY 16R

FORT WORTH ALLIANCE (AFW)

<p><b>⚠</b> For uncompensated Baro-VNAV systems, LNAV/VNAV NA below -9°C (16°F) or above 54°C (130°F). Circling NA east of Rwy 16L-34R. DME/DME RNP-0.3 NA.</p>	<p>MISSED APPROACH: Climb to 1200 then climbing right turn to 3000 direct OBLON and hold.</p>			
	<p>ATIS <b>126.925</b></p>	<p>REGIONAL APP CON <b>118.1 306.95</b></p>	<p>ALLIANCE TOWER <b>135.15 257.9</b></p>	<p>GND CON <b>132.65 306.2</b></p>



VGSI and RNAV glidepath not coincident (VGSI Angle 3.00/TCH 75).

1200 3000 OBLON

↑ ↷ △

GP 3.00° TCH 55

3000  
2400  
1440

6.4 NM 3 NM 1.1 NM 1 NM

\*1 NM to RWY 16R  
\*LNAV only.

CATEGORY	A	B	C	D	E
LPV DA		921-3/4	200 (200-3/4)		
LNAV/VNAV DA		1017-7/8	296 (300-7/8)		
LNAV MDA	1120-1	399 (400-1)	1120-1 1/8	399 (400-1 1/8)	
<b>C</b> CIRCLING	1200-1 477 (500-1)	1320-1 597 (600-1)	1360-1 3/4 637 (700-1 3/4)	1380-2 657 (700-2)	1380-2 1/4 657 (700-2 1/4)

SC-2, 31 JAN 2019 to 28 FEB 2019

SC-2, 31 JAN 2019 to 28 FEB 2019