

VORTAC GNV 116.2 Chan 109	APP CRS 057°	Rwy Idg 5046 TDZE 190 Apt Elev 196
---	------------------------	---

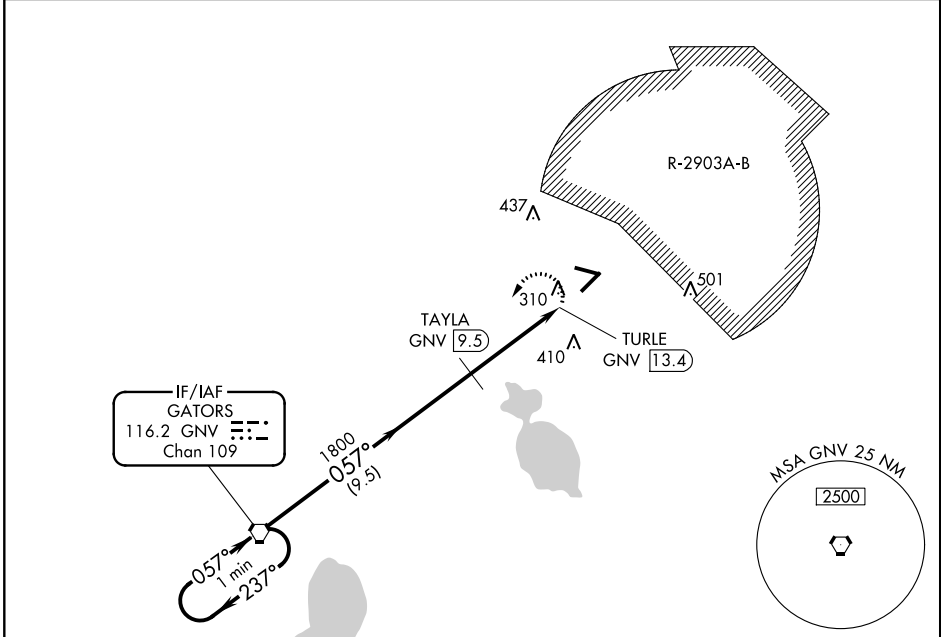
VOR/DME RWY 5

KEYSTONE AIRPARK (42J)

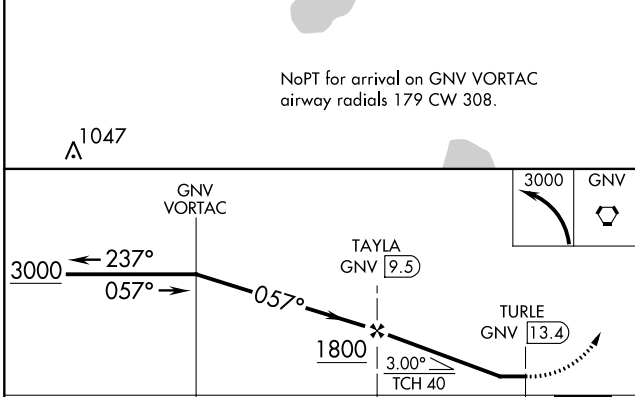
▽ Visibility reduction by helicopters NA. Circling NA for Cats B and C northeast of Rwy 11-29. When local altimeter setting not received use Gainesville altimeter setting and increase all MDA 60 feet; increase S-5 Cat C visibility ¼ mile.

MISSED APPROACH: Climbing left turn to 3000 direct GNV VORTAC and hold.

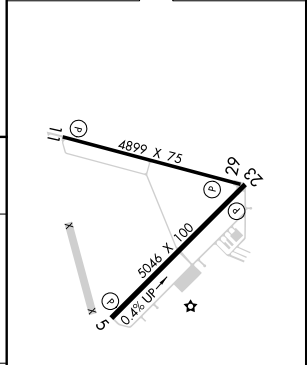
AWOS-3 124.275	JACKSONVILLE APP CON 118.175 338.25	UNICOM 122.7 (CTAF)
--------------------------	---	-------------------------------



NoPT for arrival on GNV VORTAC airway radials 179 CW 308.



ELEV 196	TDZE 190
----------	----------



CATEGORY	A	B	C	D
S-5	680-1¼	490 (500-1¼)		NA
CIRCLING	680-1¼	484 (500-1¼)	680-1½ 484 (500-1½)	NA

REIL Rwy 5, 11 and 23
MIRL Rwy 5-23
HIRL Rwy 11-29

SE-3, 31 JAN 2019 to 28 FEB 2019

SE-3, 31 JAN 2019 to 28 FEB 2019