

VOR/DME SHB <b>112.0</b> Chan <b>57</b>	APP CRS <b>287°</b>	Rwy Idg TDZE Apt Elev <b>N/A</b> <b>N/A</b> <b>732</b>
---	------------------------	---

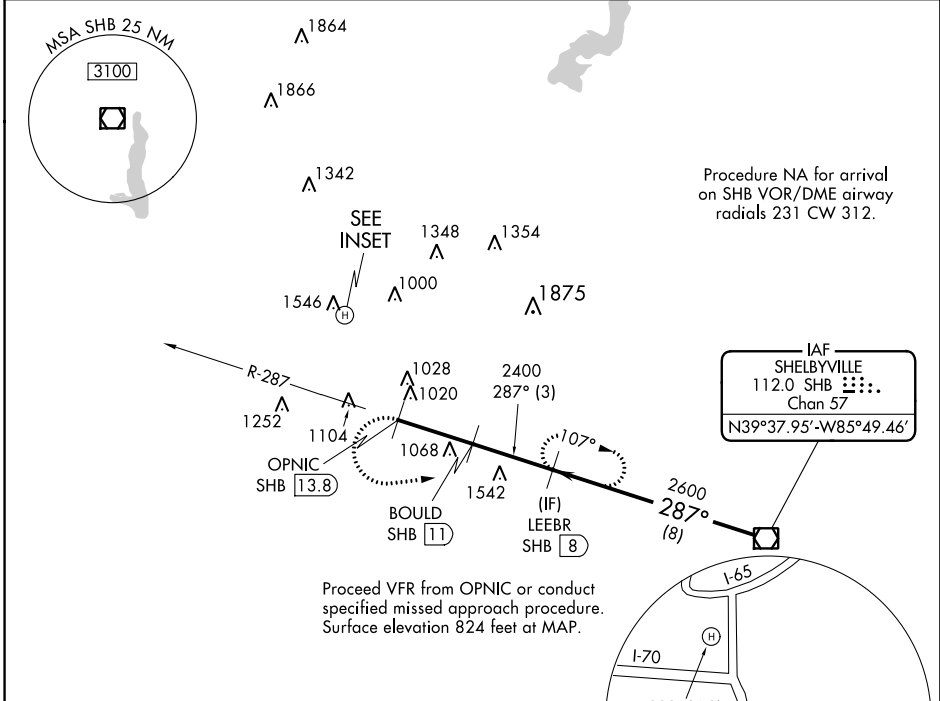
# COPTER VOR/DME 287°

INDIANAPOLIS DOWNTOWN HELIPORT (8A.4)

**▲ NA** When local altimeter setting not received, use Indianapolis Intl altimeter setting and increase MDA 40 feet. **ACTIVATE High Intensity Pad Lights-CTAF.**

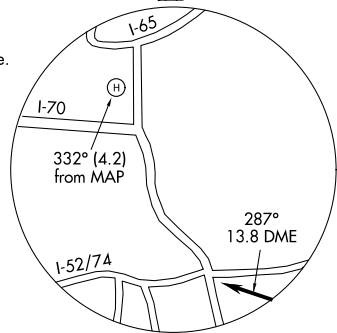
**MISSED APPROACH:** Climbing left turn to 2600 via SHB R-287 to LEEBR/SHB 8 DME and hold.

AWOS-3 <b>118.250</b>	INDIANAPOLIS APP CON <b>125.275 317.8</b>	UNICOM <b>123.05 (CTAF) 0</b>
--------------------------	--	----------------------------------

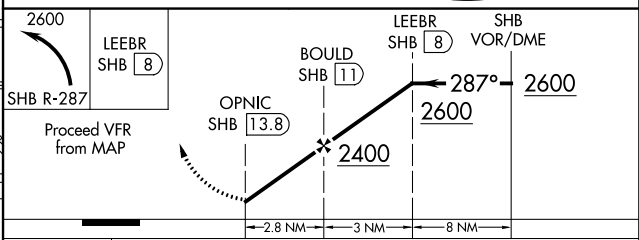
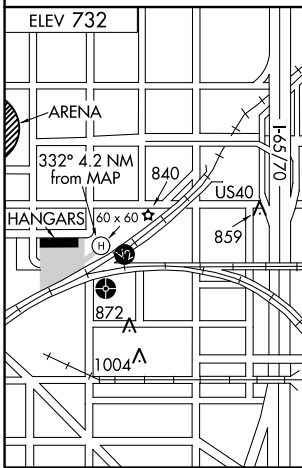


Proceed VFR from OPNIC or conduct specified missed approach procedure. Surface elevation 824 feet at MAP.

IAF  
SHELBYVILLE  
112.0 SHB  
Chan 57  
N39°37.95'-W85°49.46'



**CAUTION:** Heliport located in area of numerous lighted and unlighted obstructions.



CATEGORY	COPTER	
H-287°	1340-¾	1340 (1400-¾)

EC-2, 31 JAN 2019 to 28 FEB 2019

EC-2, 31 JAN 2019 to 28 FEB 2019